

“Twenty bridges from Tower to Kew
(Twenty bridges or twenty-two)
Wanted to know what the River knew,
For they were young, and the Thames was old
And this is the tale that River told ...”

Rudyard Kipling

OSPREY HOUSE



ROSEFINCH HOUSE



WELCOME TO OSPREY & ROSEFINCH HOUSE

Two stunning Riverside Homes nestled down a quiet lane on Richmond Riverside.

Both properties benefit from spectacular views across the River Thames, along with private river access and boat moorings as standard.





Osprey House Kitchen & Dining Area

Spaces flow beautifully from one to the next. Each filled with light, luxury and outstanding British craftsmanship.



KITCHEN & DINING



KITCHEN

The Kitchens at Osprey & Rosefinch House combine the very best of British, Irish, German & Italian craftsmanship.

Bespoke cabinetry made with Irish Oak, handcrafted in Charles Yorke's work shop in Nottinghamshire. Italian Marble from the Apuan Alps takes centre stage on the waterfall island worktop and generous kitchen splashback. The very best of German appliances from Gaggenau and Miele are supplied as standard.





Step into sumptuous, tranquil surroundings and make yourself at home.



MASTER SUITE







MASTER SUITE


The Master Suites at Osprey and Rosefinch House have been designed by Nomad without compromise.

Both take up the entirety of a floor* in their respective homes creating an unrivalled sense of light and space. Look out the floor to ceiling windows to enjoy views of the River Thames and beyond to the picturesque architecture of Richmond Riverside.

Finished with traditional Georgian cornice, premium Irish oak chevron flooring throughout, air conditioning, underfloor heating & dual zone bespoke walk in wardrobes from Neatsmith.



Osprey House En-suite Bathroom



Form follows function in the best possible way. Exquisite marble surfaces sit alongside elegant fixtures, creating a sanctuary for relaxation and contemplation.

MASTER EN-SUITE

MASTER EN-SUITE

The Master En-suites are truly wonderful spaces offering light, tranquility and practicality.

The wet room bathrooms co-designed with Porters offer Italian marble wall and floor tiling throughout, waterfall walk-in shower, polished nickel sanitary ware, underfloor heating and bespoke vanity units as standard.





Osprey House En-suite Bathroom

THE GARDENS

Award-winning designer
Matt Keightley and
his team at Rosebank
Landscaping were
commissioned to create
these remarkable gardens.





Osprey House Rear Garden



Upper Garden

OSPREY HOUSE GARDEN



Lower Garden

ROSEFINCH HOUSE GARDEN

The vision was to make outside spaces feel like additional rooms to the house, each with a distinct purpose and setting.







Osprey House Ground Floor Terrace





WELCOME TO RICHMOND RIVERSIDE

Step into a slower pace of life, surrounded by
natural beauty and classic British architecture.





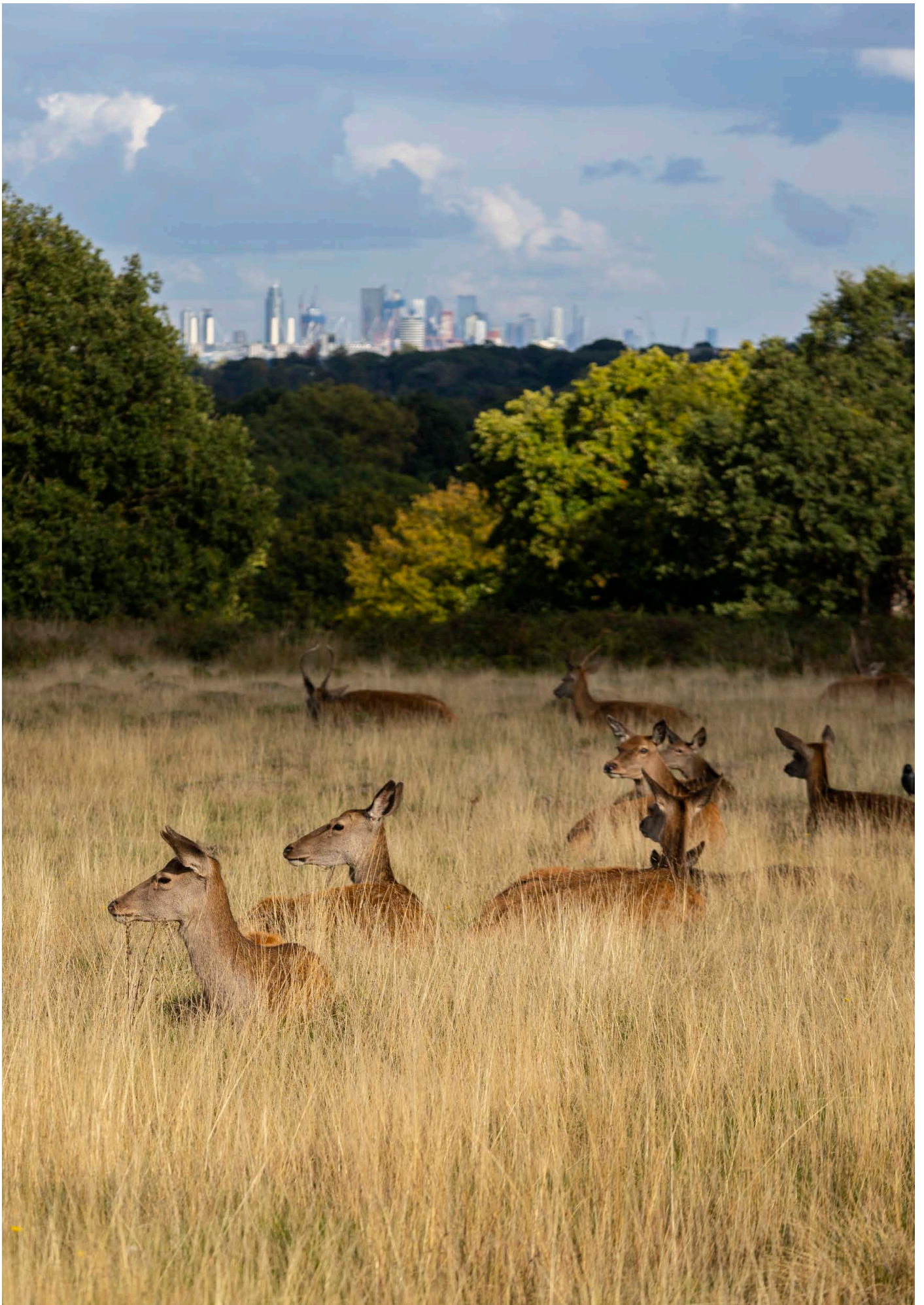




RICHMOND PARK

A spectacular National Nature reserve is just moments away. Take a walk and see the town from a fresh perspective.

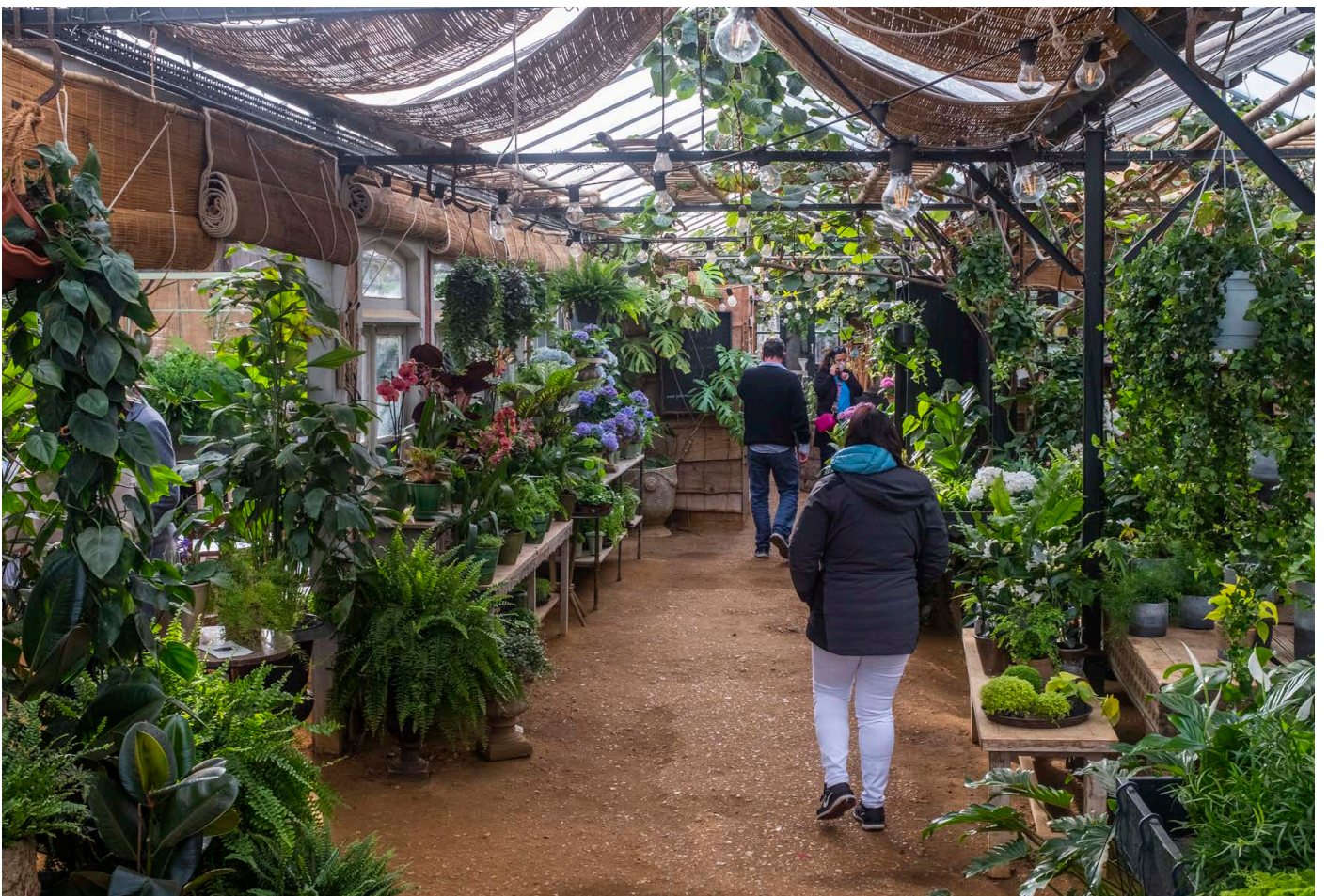




Red Deer, Richmond Park



The View from Richmond Hill



Petersham Nurseries

RICHMOND TOWN

Whether you're seeking incredible eateries, classic pubs, independent stores or artisan markets, it's all here.



THE
IVY
CAFE



No.1 Duke Street, Richmond Town Centre



The Princes Head




The Old Ship Pub

LOCATION

Osprey & Rosefinch House are blessed with a truly world-class location.

The two properties are nestled on the idyllic Willoughby Road, hugging the River Thames. Just 3 minutes walk to the hustle and bustle of central Richmond Riverside.

Location	 Distance
Richmond Riverside	3 min (350 yards)
The Ivy	5 min (528 yards)
Goucho	5 min (528 yards)
Richmond Train Station	12 min (0.6 mile)
Richmond Park	17 min (0.9 mile)
Petersham Nurseries	18 min (1 mile)
Kew Gardens	25 min (1.3 miles)



Kew Gardens

Richmond Train Station

The Ivy

RICHMOND

Goucho

OSPREY &
ROSEFINCH HOUSE

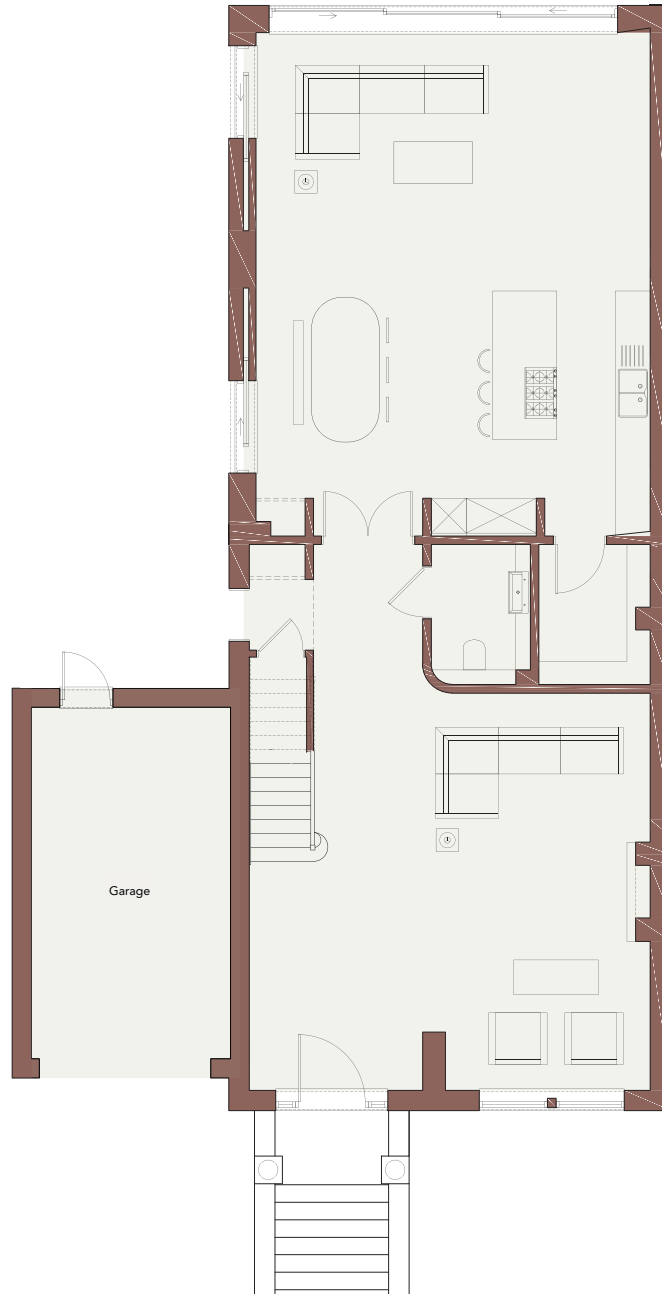
EAST
TWICKENHAM

Petersham Nurseries

Richmond Park

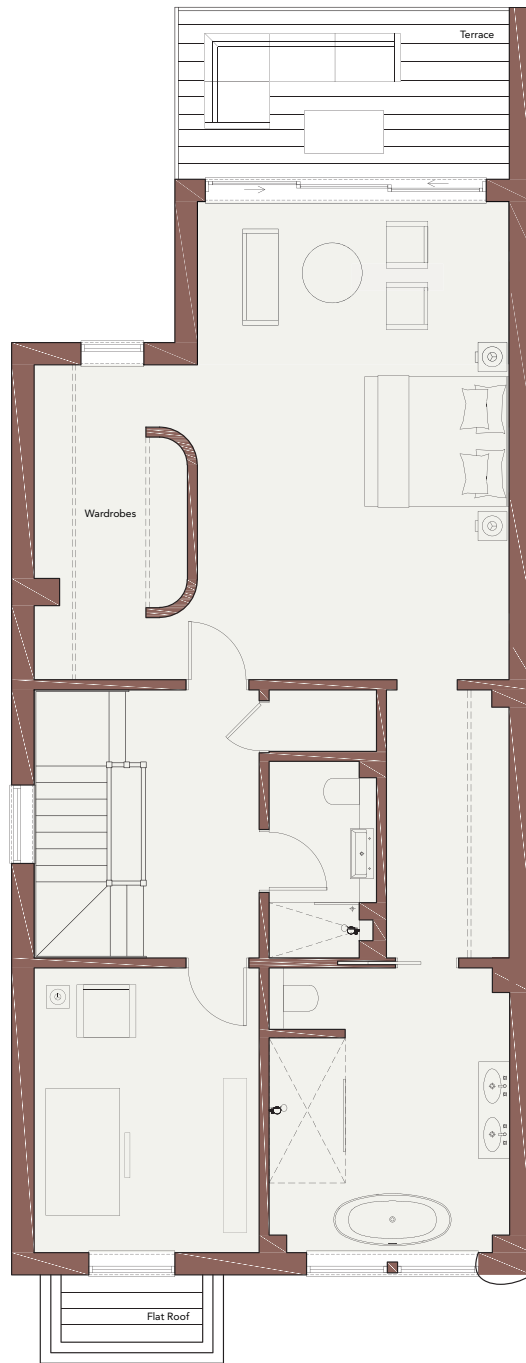


OSPREY HOUSE
FLOORPLANS



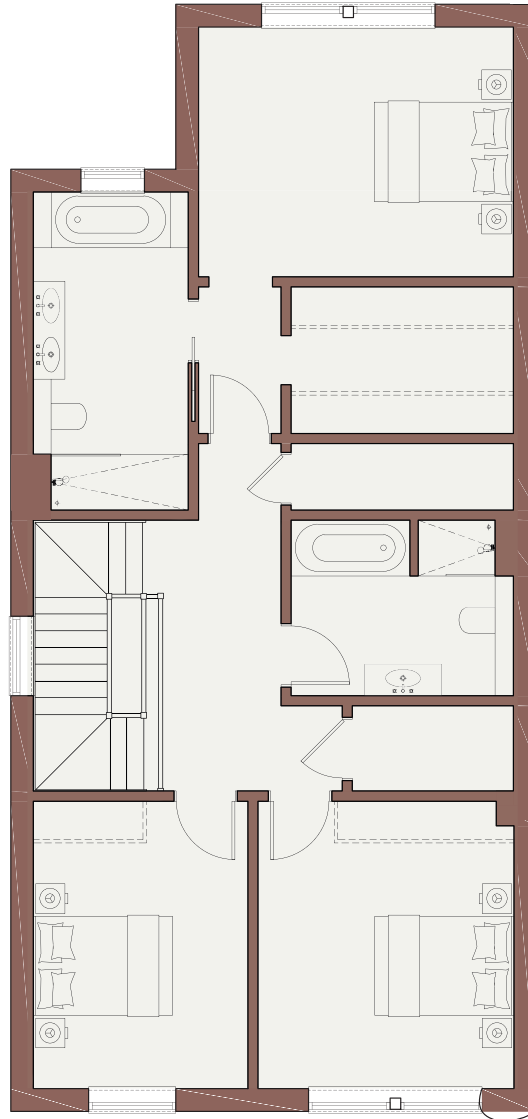
Ground Floor

Location	W x D (mm)	W x D (ft)
Kitchen/Dining Area	6871 x 4200	22'7" x 13'9"
Family Room	6871 x 4427	22'7" x 14'5"
Reception Room	3898 x 6809	12'10" x 22'4"
Garage	3075 x 6024	10'1" x 19'9"



First Floor

Location	W x D (mm)	W x D (ft)
Master Bedroom	4508 x 6917	14'10" x 22'9"
Study/Bedroom 5	3255 x 4116	10'8" x 13'6"
Master En-suite	3478 x 4116	11'5" x 13'6"
Terrace	4838 x 2437	15'11" x 8'

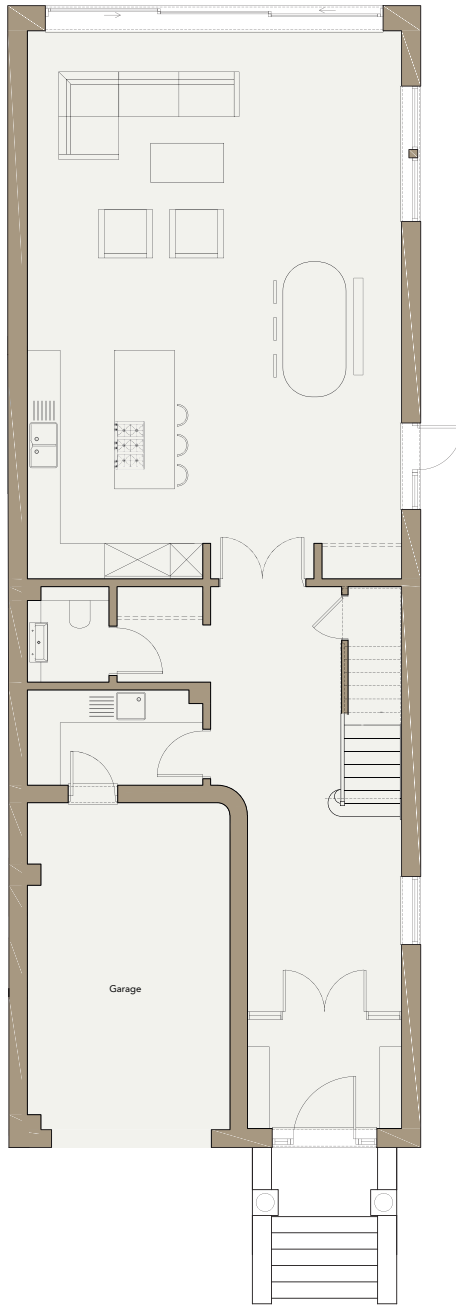


Second Floor

Location	W x D (mm)	W x D (ft)
Bedroom 2	4508 x 3578	14'10" x 11'9"
Bedroom 3	3664 x 4116	12' x 13' 6"
Bedroom 4	3069 x 4116	10'1" x 13'6"
Bathroom	3171 x 2515	10'5" x 8'3"

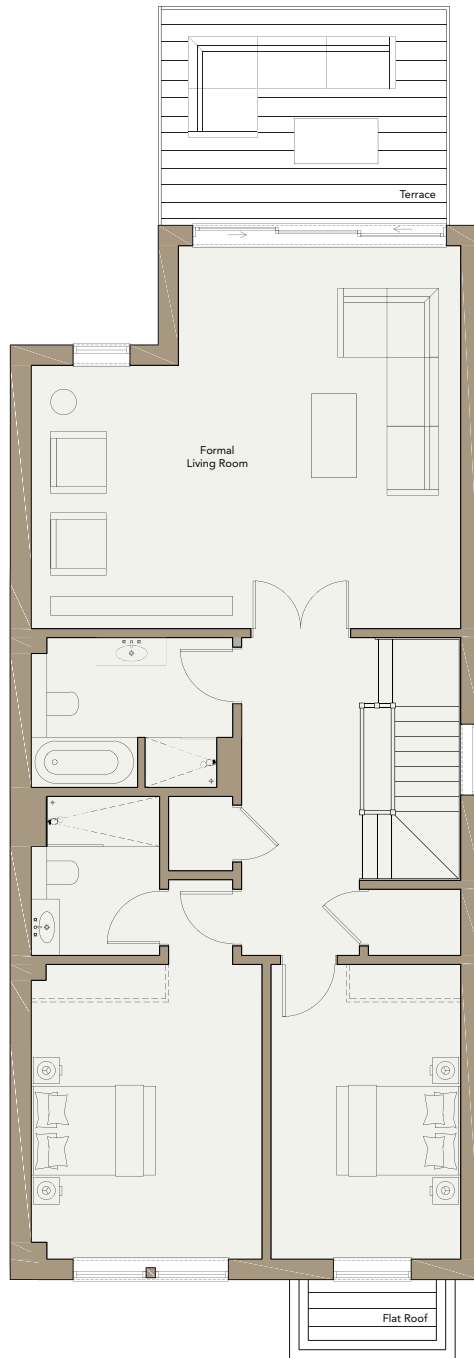


ROSEFINCH HOUSE
FLOORPLANS



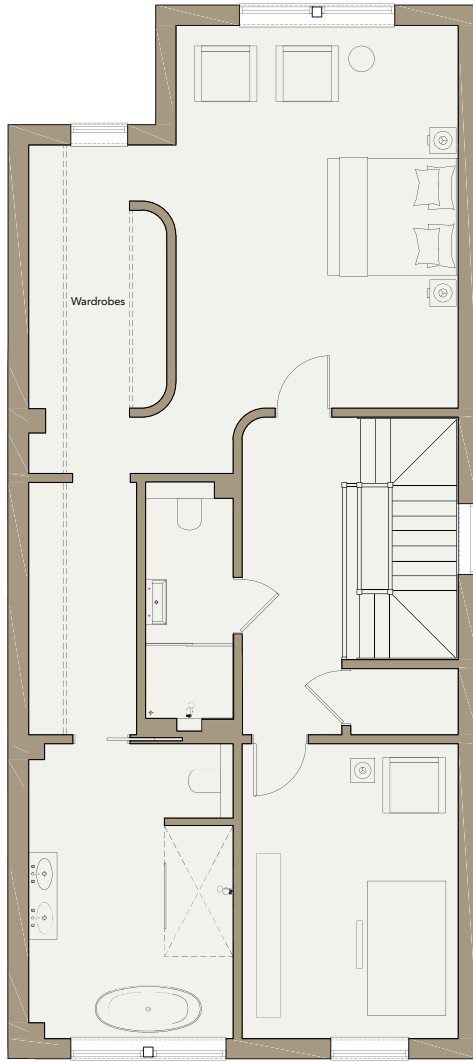
Ground Floor

Location	W x D (mm)	W x D (ft)
Kitchen/Dining Area	6870 x 4200	22'7" x 12'9"
Family Area	6870 x 5861	22'7" x 19'3"
Garage	3720 x 6000	12'3" x 19'8"



First Floor

Location	W x D (mm)	W x D (ft)
Living Room	6870 x 6126	22'7" x 20'1"
Bedroom 2	3692 x 4717	12'1" x 15'6"
Bedroom 3	3033 x 4717	10' x 15'6"
Bathroom	3221 x 2395	10'7" x 7'10"
Terrace	4663 x 3450	15'4" x 11'4"



Second Floor

Location	W x D (mm)	W x D (ft)
Master Bedroom	4516 x 6126	14'10" x 20'1"
Study/Bedroom 4	3455 x 4717	11'4" x 15'6"
Master En-suite	3270 x 4717	10'9" x 15'6"

SPECIFICATION

Kitchen

- Fully fitted, oak veneer kitchen by Charles Yorke
- Marble worktops
- Soft-close doors and drawers
- Under-mounted Caple stainless steel sink
- Gaggenau Series 400 OVEN
- Nikola Tesla Flame Black recirculating vented Gas Hob
- Gaggenau 400 series combination microwave oven
- Gaggenau Vario cooling 400 series, freezer with ice water dispenser
- Vario cooling 400 series, wine climate cabinet , 2 zones, glass door, 18" (45,7cm), Door Opening Assist, HC Ready
- Miele dishwasher
- Quooker boiling water tap
- Bespoke pantry cupboard with marble countertop & oak shelving
- Walk-in pantry with bespoke storage & shelving

Bathroom & En-suite

- Porter sanitary ware
- Porter vanity units
- All bathrooms & en-suites are wet rooms
- Marble tiling through out
- Chrome heated towel rail
- Marble wet rooms to master en-suites

Utility

- Fully fitted, hand painted utility furniture with quartz worktops
- Stainless steel undermounted single sink with Reginox taps
- Freestanding Miele washing machine and freestanding Miele condenser tumble drier to semi-detached
- Pre-plumbed water softener connections

Internal Finishes

- Satin paint finish to all rooms
- Chrome brushed finish door handle with chrome door furniture, light switches and sockets
- Cornice to hall and landing areas, family area, drawing room, dining room and all bedrooms
- Marble tiling to all bathrooms, kitchen/breakfast area and utility room
- Trunk Chevron Oak flooring throughout property
- Banham high security front entrance door with multi-point locking system
- Banham internal alarm with sensors to hall, drawing room, dining room, kitchen/family area and landing
- CCTV Security externally throughout

External Finishes

- Landscaped front garden and rear gardens designed by Rosebank Landscapes
- Porcelian tiling to patio (where applicable)
- External tap to rear of property
- External double socket to rear of property
- External landscaping lighting
- External BBQ/Kitchen areas

Heating & Mechanical

- Underfloor heating throughout property
- Air Conditioning throughout property
- Traditional gas fire to drawing rooms
- Dimmer switches to kitchen/breakfast/dining, drawing room and master bedroom
- LED downlights to all rooms
- BT points to drawing room, kitchen/breakfast, dining area, study and master bedroom
- TV/AV points to drawing room, kitchen/breakfast, dining room, study and all bedrooms
- Wired for Sky Q to all TV points*
- CAT 6 wiring throughout property
- Pre-wired ceiling speakers throughout



OTTOLENGHI SIMPLE
PLENTY MORE

OUR ETHOS

At Nomad, we care about what we build. Land, time and resources are precious. Let's not waste them creating something less than perfect.

As a small, family-run business, we are committed to taking care of every little detail. From acquisition, design and construction through to final sale, our goal is to create homes we are truly proud of.

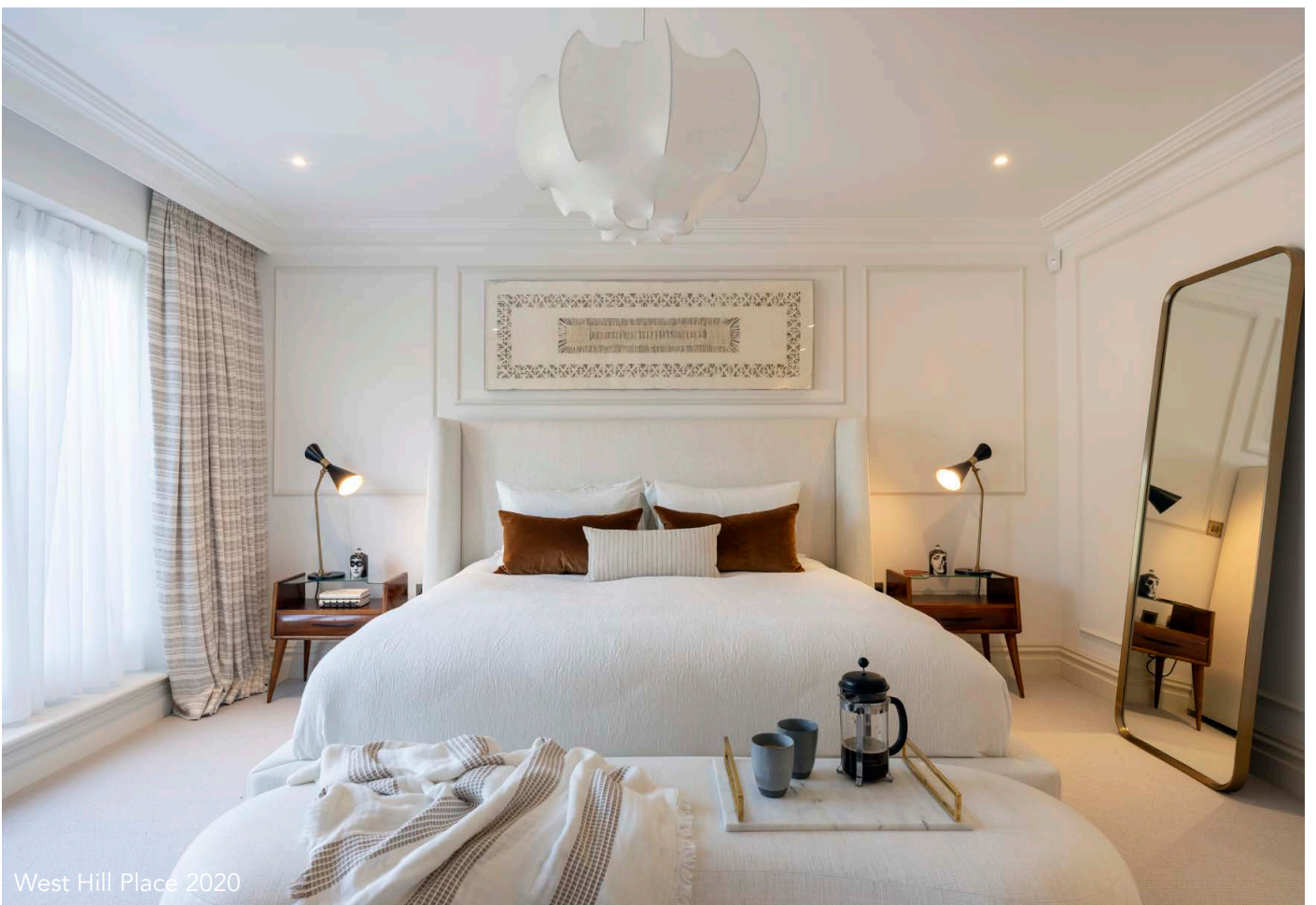
We are incredibly fortunate to work with a team of highly skilled craftsmen, architects and designers – many of whom we've been collaborating with for over 20 years. This loyalty, dedication and expertise means our homes are both exceptional and built to last.



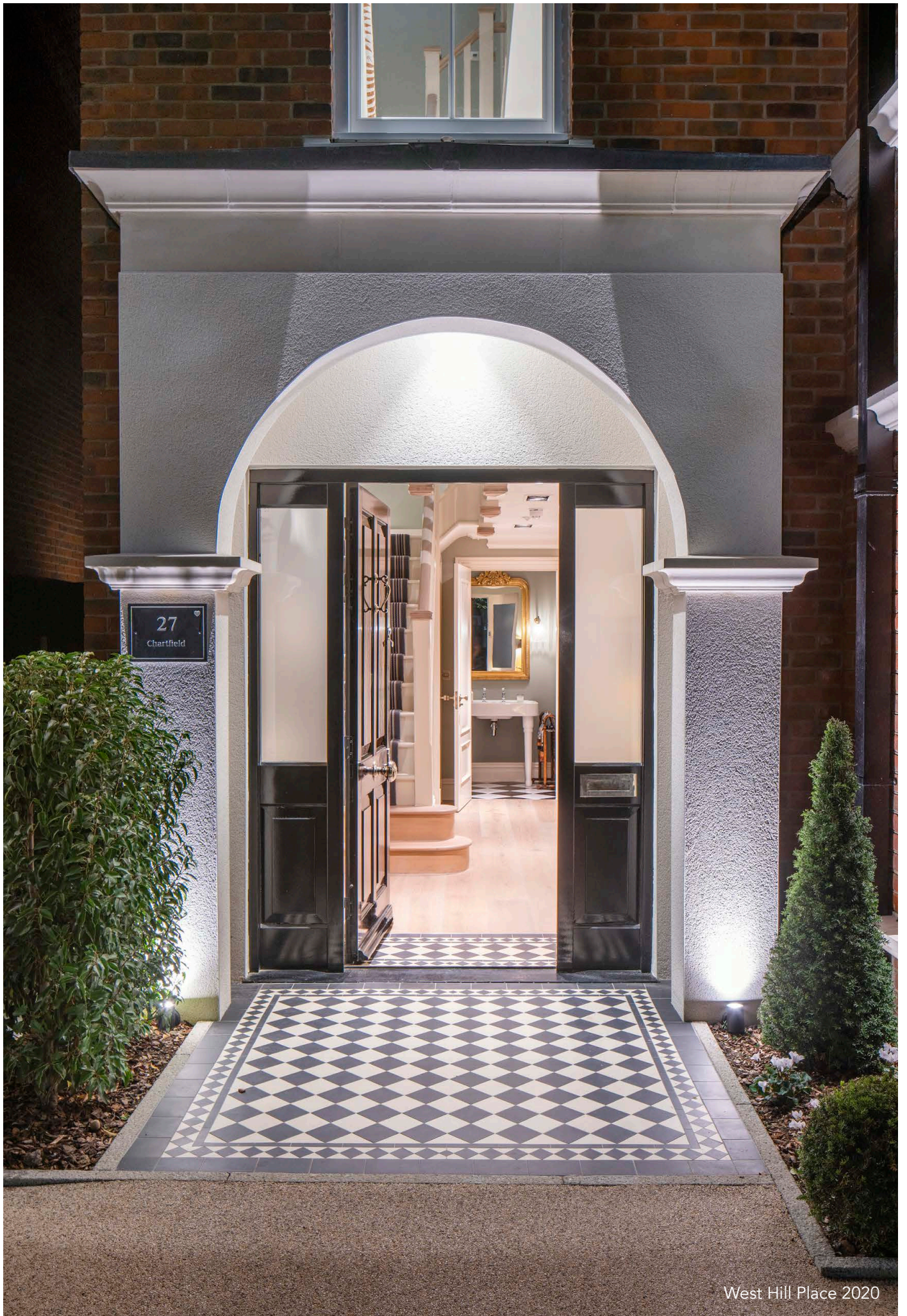




West Hill Place 2020



West Hill Place 2020





2019

21
The Olive House



CONTACT

020 3488 7202

info@nomaddevelopments.com

Follow Us:

 @nomaddevelopments_ldn

 @nomaddevelopments

The information in this document is indicative and is intended to act as a guide only as to the finished product. Accordingly, due to Nomad Developments' policy of continuous improvement, the finished product may vary from the information provided.

These particulars should not be relied upon as statements of fact or representations and applicants must satisfy themselves by inspection or otherwise as to their correctness. This information does not constitute a contract or warranty. The dimensions given on plans are subject to minor variations. Richmond Riverside is a marketing name and will not necessarily form part of the approved postal address.

Applicants are advised to contact Nomad Developments to ascertain the availability of any particular property. All computer generated images and lifestyle photography are indicative only. March 2021.

