

Patterns

An ecological understanding of culture draws lessons from healthy living systems patterns. These patterns can encourage our cultural actions to be regenerative.

Try designing from patterns to details. Use this canvas to zoom out before you create detailed plans.



Interdependency

All parts of a living system are interconnected. This means different sectors, roles, disciplines, organisations, places and communities within a cultural ecosystem are all interdependent.

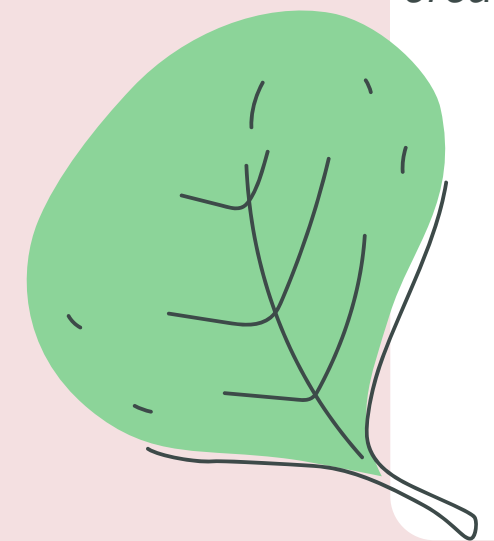
If we understand this, we can encourage networked and reciprocal relationships across these edges.

How might I encourage healthy relationships that enable creative collaborations across different boundaries and edges?

Emergent

All living systems are constantly changing.

Like natural ecosystems, culture is in constant formation as it adapts, changes and evolves.

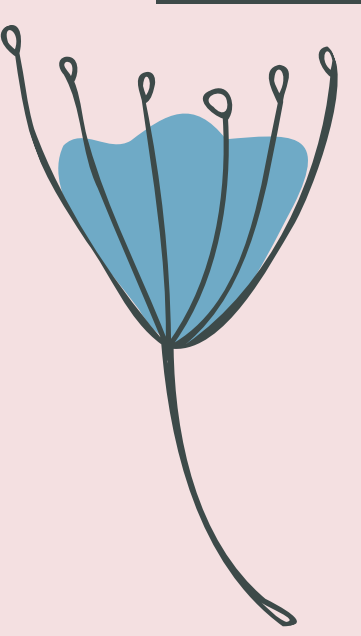


How might I hold space for evolution of cultural activity and the potential for new creative action and cultural capabilities?

Porous boundaries

We can find inspiration from outside the local ecosystem to help new ideas to flow. We can experiment with how we can interact with existing cultural values and activity.

Flow prevents stagnation. It encourages adaptation and supports regenerative community resilience.



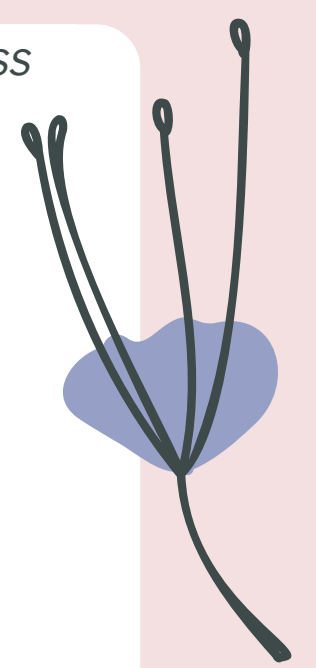
How might I draw inspiration from outside the local ecosystem in a way that supports local cultural potential while still being true to the uniqueness of this place?

Non-hierarchical

All parts of the ecosystem are of equal value. Culture is a communal phenomenon meaning no one element is more important.

This means that we can share responsibility for cultural action and a healthy ecosystem.

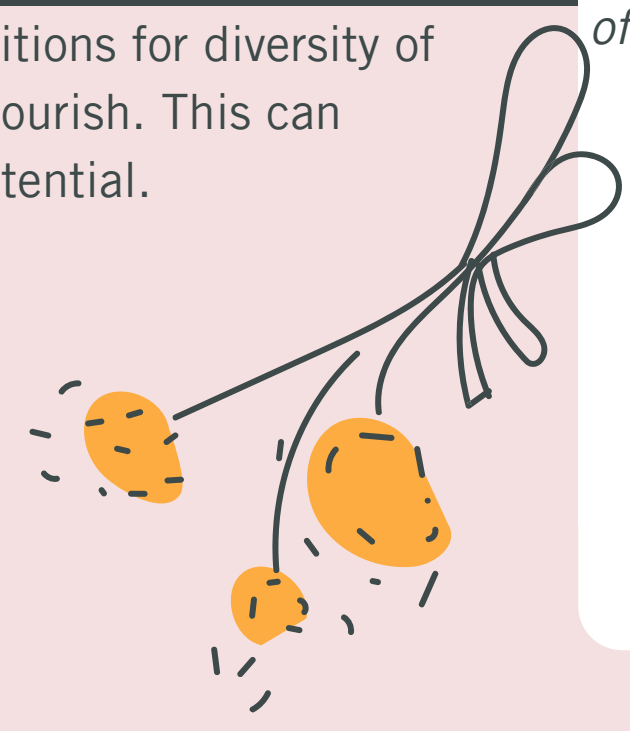
How might I help distribute power across the ecosystem?



Living systems favour diversity

We can create conditions for diversity of culture-making to flourish. This can increase cultural potential.

How might I create conditions for diversity of culture-making to flourish?



Unique to place

While we borrow tools and ideas from outside the ecosystem these are always tailored to be place specific.

Above all we prioritise co-creating in alignment and harmony with the unique potential of Dudley's cultural ecosystem.

How might I align with the unique cultural potential of Dudley? How am I informed by local place based knowledge and local creative and cultural knowledge stewards?

