

EXTERIOR FABRICS

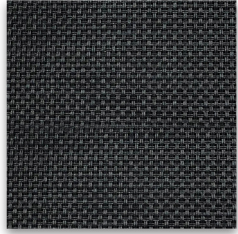
Exterior shades and screens allow you to extend the usable season of your outdoor space by moderating temperatures while keeping the pests away. Enhance privacy and protect expensive outdoor furniture from weather and harmful UV rays.



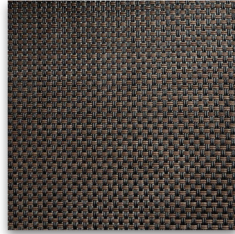
SHEERWEAVE 2000, 2100

PHIFER

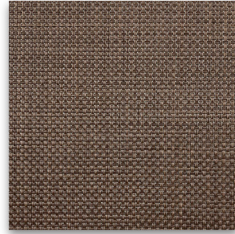
5% 10%



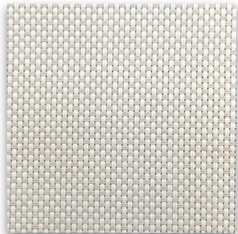
Charcoal



Charcoal Chestnut



Bronze



White Bone

STYLE:

Exterior

OPENNESS FACTOR:

2000 = 5% 2100 = 10%

COMPOSITION:

37% GRP, 63% Vinyl

WEIGHT:

5% = 14.4 oz. | 10% = 12.9 oz.

THICKNESS:

5% = 0.021 in. | 10% = 0.021 in.

WIDTH:

5% = 126 in. | 10% = 98 in.

FIRE CLASSIFICATION:

NFPA 701

NFPA 101 (Class A)

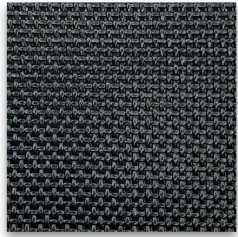
CAN/CGSB2-4.162-M80



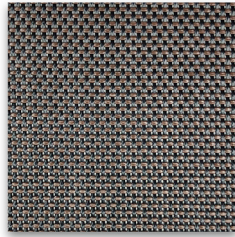
*Due to the technical limitations of digital cameras and inconsistencies of display monitors, the characteristics and colors of the fabrics seen on your screen may appear different than the actual product. We will be happy to provide samples of our products upon request.

SUNTEX 90

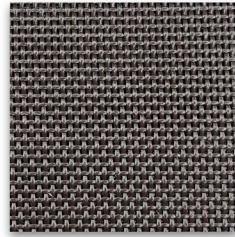
10%



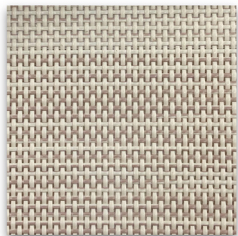
Black



Dark Bronze



Brown



Stucco

PHIFER

STYLE:

Exterior

OPENNESS FACTOR:

10%

COMPOSITION:

31% PES, 69% Vinyl

WEIGHT:

17.2 oz.

THICKNESS:

0.039 in.

WIDTH:

120 in.

FIRE CLASSIFICATION:

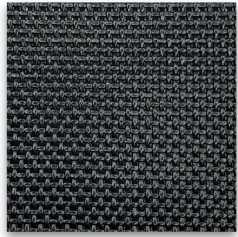
NFPA 701



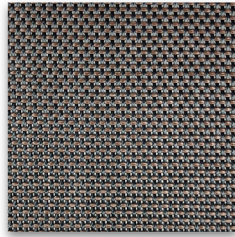
*Due to the technical limitations of digital cameras and inconsistencies of display monitors, the characteristics and colors of the fabrics seen on your screen may appear different than the actual product. We will be happy to provide samples of our products upon request.

SUNTEX 95

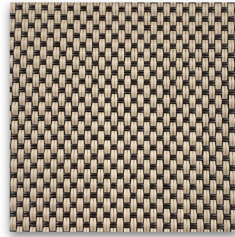
5%



Black



Dark Bronze



Mocha

PHIFER

STYLE:

Exterior

OPENNESS FACTOR:

5%

COMPOSITION:

28% PES, 72% Vinyl

WEIGHT:

15.1 oz.

THICKNESS:

0.029 in.

WIDTH:

126 in.

FIRE CLASSIFICATION:

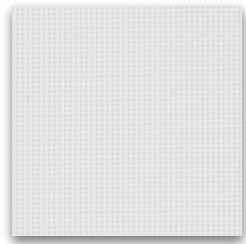
NFPA 101 (Class A)



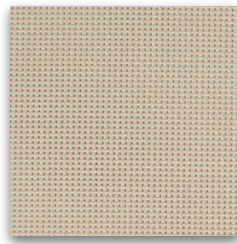
*Due to the technical limitations of digital cameras and inconsistencies of display monitors, the characteristics and colors of the fabrics seen on your screen may appear different than the actual product. We will be happy to provide samples of our products upon request.

TEXTILENE 90, 80

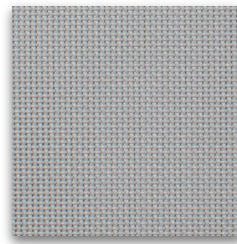
10% 20%



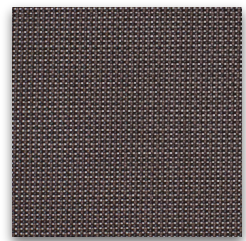
White



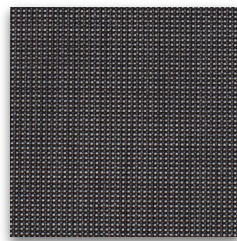
Sandstone



Dusk Grey



Black/Brown



Black

STYLE:

Exterior

OPENNESS FACTOR:

90 = 10% 80 = 20%

COMPOSITION:

PVC Coated PES

UV BLOCKAGE:

10% = Approx. 90% 20% = Approx. 80%

WEIGHT:

10% = 15.8 oz. 20% = 13.0 oz.

THICKNESS:

10% = 0.035 in. 20% = 0.033 in.

WIDTH:

10% = 126 in. 20% = 126 in.

FIRE CLASSIFICATION:

NFPA 701

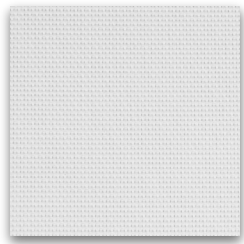
NFPA 101



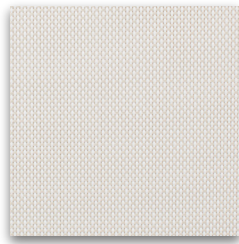
*Due to the technical limitations of digital cameras and inconsistencies of display monitors, the characteristics and colors of the fabrics seen on your screen may appear different than the actual product. We will be happy to provide samples of our products upon request.

TEXTILENE NANO 95

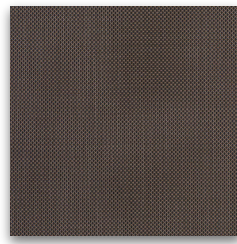
5%



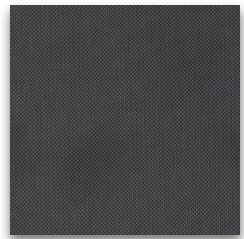
White



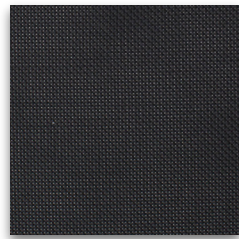
Bone



Tobacco



Charcoal



Flat Black

STYLE:

Exterior

OPENNESS FACTOR:

5%

COMPOSITION:

PVC Coated PES

UV BLOCKAGE:

Approx. 95%

WEIGHT:

14.7 oz.

THICKNESS:

0.026 in.

WIDTH:

126 in.

FIRE CLASSIFICATION:

NFPA 701

NFPA 101

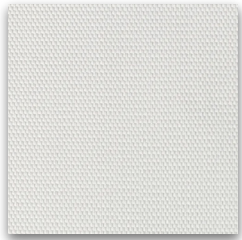


*Due to the technical limitations of digital cameras and inconsistencies of display monitors, the characteristics and colors of the fabrics seen on your screen may appear different than the actual product. We will be happy to provide samples of our products upon request.

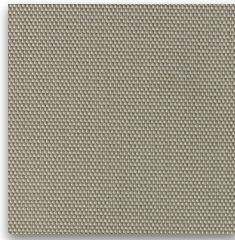
TEXTILENE DIM OUT



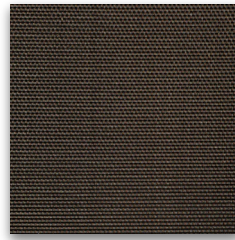
>1%



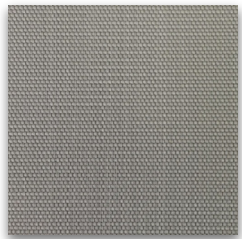
White



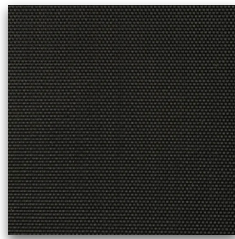
Tan



Tobacco



Grey



Flat Black

STYLE:

Exterior

OPENNESS FACTOR:

>1%

COMPOSITION:

PVC Coated PES

UV BLOCKAGE:

Approx. 99%

WEIGHT:

19.5 oz.

THICKNESS:

0.0344 in.

WIDTH:

120 in.

FIRE CLASSIFICATION:

NFPA 701

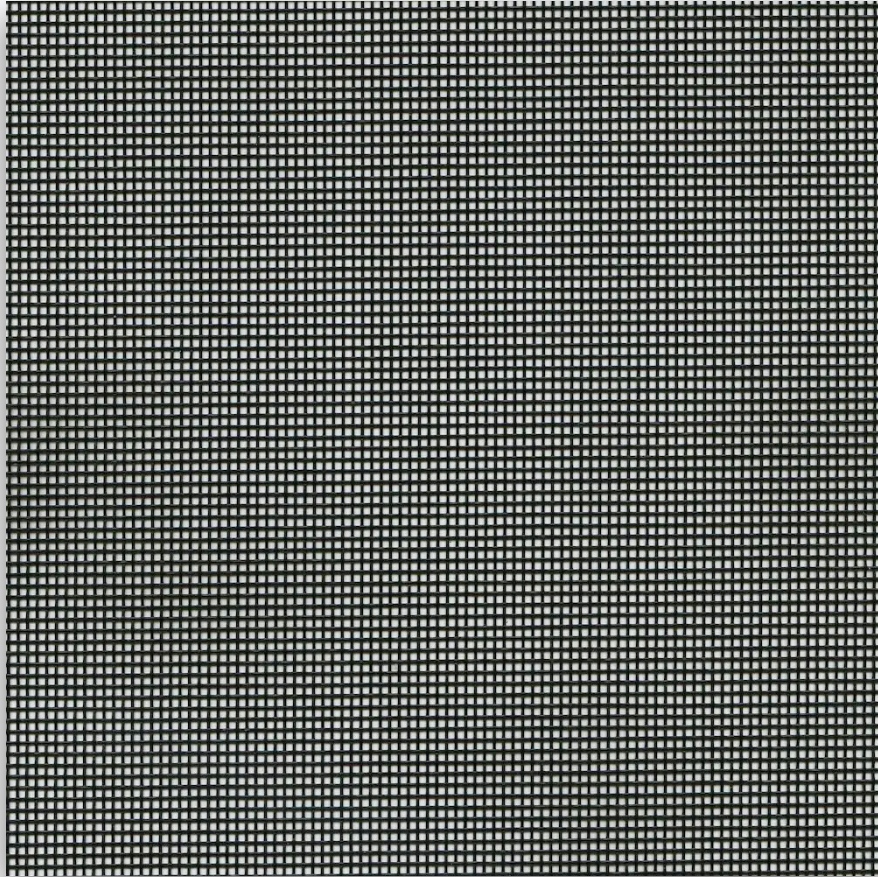
NFPA 101



*Due to the technical limitations of digital cameras and inconsistencies of display monitors, the characteristics and colors of the fabrics seen on your screen may appear different than the actual product. We will be happy to provide samples of our products upon request.

TUFFSCREEN

45%



Black

PHIFER

STYLE:

Exterior

OPENNESS FACTOR:

45%

COMPOSITION:

Vinyl-coated PES

WEIGHT:

6.8 oz.

THICKNESS:

0.024 in.

WIDTH:

132 in.



RAILROADABLE



EXTERIOR APPLICABLE

*Due to the technical limitations of digital cameras and inconsistencies of display monitors, the characteristics and colors of the fabrics seen on your screen may appear different than the actual product. We will be happy to provide samples of our products upon request.