

Kalispell Fourth of July Parade Rules & Regulations

REGISTRATION: The Flathead Marines, Inc. reserves the right to approve or reject applications for any reason. To offset costs of the Parade there is a \$50 registration fee for all participants, except for Veteran's Groups and Emergency Responders Entries. See the entry definitions below.

Please send the signature page of your application with the entry fee (Check or Money Order) to:

Flathead Marines, Inc.

PO Box 2624, Kalispell, MT 59903

Phone: 406-249-2448, Email: Info@FlatheadMarines.com

- a. If there is a problem with your entry registration you will be contacted, otherwise follow the guidelines listed below for participation.
- b. Any cancellations for refunds must be received and confirmed by July 1st.
- c. An insufficient funds charge of \$50 will be charged to the individual or group submitting the parade registration.
- d. Registrations must be postmarked by June 28th for entry. Registrations presented on the day of the parade may be subject to an additional fee.

LINEUP:

1. The parade will begin at 10:00 am on July 4th. The parade will occur rain or shine. There is no rain date for this parade so please come prepared.
2. Please refer to the attached list for your entry category and its respective start check in at the registration desk time. There will be a lot of congestion during the lineup time period, please practice patience and tolerance. If you need assistance look for an individual with a yellow safety vest on. If they can't immediately help you, they will contact someone who can. Be advised you may be asked to shift your position in line.

Start Line-Up Time	Category Number	Category Name	Participant Description examples
730	100	Veterans Organizations	VFW, American Legion, Veterans Groups
745	200	School & Civic Groups	Schools, Bands, Choral Groups, Rotary, Scouts, Civil Air Patrol
800	300	Automotive	Motorcycles, Cars, Trucks, Auto Clubs
815	400	Business	Businesses
830	500	Entertainment & Religious	Bicycles, Aerialists, Gymnastics, Worship Groups
845	600	Agricultural	FFA, 4 H, other Animal Groups
900	700	Political	Political Groups, Individuals seeking Office
915	800	Emergency Responders	Sheriff, Police, Fire Departments, Ambulance, Search & Rescue
1000	Parade Starts		

- a. Enter the Kalispell Center Mall Parking lot at the East Entrance off US Hwy #93 (by US Bank) and stop at the check in tent. To facilitate a smooth line up please attempt to come at your categories start time. You will then be directed to proceed around the North side of the Mall and guided to your line up or staging position. If you believe your entry is too large to maneuver in the Parking lot, please contact us in advance and you will be given alternate instructions.
- b. You will be given a registration number at the check in tent for you to display, please place it on the passenger/left side of your entry so that the Parade Master of Ceremony can properly identify and announce you as you pass them.
- c. The registration check in will be in at the Eastern entrance of the Kalispell Center Mall off US Hwy #93 in front of US Bank. You must come and check in at the registration desk upon your arrival. You will receive your entry number and any further instructions then.
- d. To ensure excellence in presentation and efficiency in coordination, all placements within the parade lineup are at the discretion of the parade organizing committee. The individual lineup order will be finalized the day of the parade; you will be guided to your line up position. If you need assistance look for an individual with a yellow safety vest on. If they can't immediately help you, they will contact someone who can. Be advised you may be asked to shift your position in line.
- e. Any conflicts will result in your immediate ejection from the parade and forfeiture of entry fee. You don't want to mess with us, we are U.S. Marines.

3. SAFETY FIRST! The lineup and staging areas will become congested with vehicles, pedestrians, and animals. Please always yield to pedestrians and animals; pedestrians please be aware of vehicles. In order to ensure safety for all participants please keep your speed limited to <10 mph in the lineup and staging area and **remain alert**.

GENERAL RULES:

- 1. Entry Definitions:** Each entry has a \$50 entry fee. If you exceed the number per entry stated below a 2nd entry fee will be charged. We are a non-profit and put this Parade on for the benefit of the community, the entry fee is to help offset costs.
 - a. Walkers and Pedal Bicycle numbers are limited to <20 with/for any entry.
 - b. Animal Groups: in your application, please indicate the number of and type of animals ridden, walked, or pulling wagon/carriages; each entry is limited to <10 animals and <2 pulled wagons/carriages. You are responsible for picking up you own animal's poop!
 - c. Motor Vehicles: groups are limited to 4 vehicles per entry.
 - d. Motorcycles: groups are limited to 6 vehicles per entry.
 - e. Businesses: are limited to 2 vehicles per entry.
 - f. Political & Religious: are limited to 1 vehicle per entry.
 - g. Emergency Responders: no vehicle number limits within their own department.
- 2. Motor Vehicle Participation:**
 - a. All drivers of a motor vehicle must have a valid driver's license and proper insurance coverage.
 - b. All motor vehicles must be operated in a safe manner at all times!
 - c. During the Parade speeds are limited to <5 MPH and should flow with the speed of the entry in front of you. Please keep your spacing as stated below.
 - d. **No "Burn-Outs, Wheelies, Drifts, Stoppies" or other unsafe driving acts are permitted.** Several observers of the Parade will be children. Practice **SAFETY FIRST!** If your entry is not interesting enough visually than perhaps it should not be in the parade. Failure to follow this rule will result in an immediate removal from the parade and appropriate action by law enforcement. You will be held Liable for any accidents.

- e. All motor vehicles and towed trailers should have visible operating brake lights, turn signals, and properly functioning brakes.
- f. Vehicles towing trailers must utilize safety chains as required for legal towing.
- g. All vehicles in the parade must be able to navigate the entire parade route and make all turns and clearances without difficulty. It is the responsibility of each driver/entrant to see to it that their float clears all obstacles (tree limbs, traffic lights, overhanging utility wires, etc.). You will personally be financially responsible for any damages caused.
- h. Each driver is responsible for actions of persons on vehicle and float/towed trailers.
- i. People are not allowed to get in/on or out/off vehicles/floats/towed trailers during the parade procession.

3. Parade Decorum: Failure to abide by any of the following will result in immediate removal from the parade.

- a. There is no specific theme for the parade other than American Patriotism, do not disrespect this.
- b. Each registered organization, group, or person(s) are permitted to carry banner(s) advertising their registered organization or group.
 - i. No Sexual Preference or Foreign Flags will be allowed to displayed in any manner in the Parade.
- c. No profanity, nudity, lewdness, violence, obscenity, hate, racism, signs or other materials insulting any ethnic, religious, political, or other identifiable group or individuals, or any material that is sexually explicit in nature is prohibited. This is a family friendly and all-American melting pot event, express tolerance, and friendship.
- d. **No physical or verbal displays of aggression with other parade participants, parade officials, or spectators will be permitted.** Please do not mess with us, we are U.S. Marines.
- e. **Parade participants ARE NOT permitted to throw items of any kind from floats or otherwise to observers.**
 - i. Candy or other promotional items **must be hand distributed by WALKERS ONLY** – as close to the street curb as possible to prevent children from coming into the street and close to the moving vehicles. **SAFETY FIRST!**
 - ii. This entry application is your **ONLY** warning. If you are found to be in violation of any of these rules you will be escorted out of the Parade! Please do not mess with us, we are U.S. Marines.
- f. Consumption of alcoholic beverages or illegal substances in any manner is prohibited.
- g. Discharge of firearms or fireworks is prohibited.
- h. No fire eaters, flaming hoops, flaming jugglers, or anything on fire is allowed as part of an entry.
- i. It is requested that no extremely loud noises/music be played, there will be children and animals present which may get startled by this. (Emergency Responders Entries get a pass on this.)
- j. Participants should keep pace with the entry ahead of them! Please keep at least one vehicle length between yourself and the entry in front of you but no more than three. Please do not stop your entry.
 - i. The pace of the Parade will be set by our 4 U.S. Marine Color Guard, if you can't keep pace with them, then perhaps you should not be in the parade.
 - ii. If you cannot keep up the pace and a gap develops in front of your entry, you will be asked to close the gap immediately. There are others behind you, be considerate.

4. Animals:

- a. **Entrants are not permitted to allow spectators to have any contact with any animals.**
- b. You are expected to maintain control of your animal(s) at all times; riders not exhibiting control will be immediately removed from the parade for their own and spectator's safety.

- c. Animals must have updated vaccinations and be in good medical health and be able to cope with crowds, noise and other animals.
- d. Animals of any size or breed must be kept on a leash or other restraint at all times. No exceptions.
- e. Animal Entrants are required to provide and utilize their own pooper scooping support. Failure to clean up after your animal either in the staging area or on the parade route will result in a lack of future participation, and a present of the aforementioned poop will be presented to you at a later date and time. We will have parade road guards on every block and we will see you! Please do not mess with us, we are U.S. Marines.

5. Emergencies and other information:

- a. It is our goal to have parade road guard assistance on every block. Look for individuals with a yellow safety vest on. If they can't immediately help they will contact someone who can.
- b. Participants should be aware that it is possible that an emergency vehicle may need to leave the parade suddenly in the event of an emergency. Please courteously yield to such activity.
- c. This is a controlled, forward-motion parade. If your entry experiences problems during the parade, please exit the parade route in a safe manner ASAP; ask a parade road guard for assistance. Please do not block or delay the procession.
- d. There will be 2 Porta Johns for use in the lineup / staging area at the southside of the Kalispell Center Mall parking lot.

Please keep the above pages for your reference. Your entry is your acknowledgement of these rules.

Please return this completed signature page with your entry fee.

General Release and Acceptance of Rules: I/We the applicants have read the conditions of the event and agree to abide by the conditions. I/We agree to assume full responsibility for my/our property. In addition, I/We do expressly release the Flathead Marines, Inc., the City of Kalispell, and the Kalispell Center Mall from any and all liability for any damage, injury, or loss of any person, business or property which may arise from my/our participation in the parade and agree to hold the Flathead Marines, Inc., the City of Kalispell, and the Kalispell Center Mall harmless of any damage, injury or loss by reason thereof. I/We give permission to use my/our name, business name, photo descriptions, photos, or images taken of me or my items for any and all purposes.

Organization /Group Name

Entry Category

Brief description of entry

Point of Contact

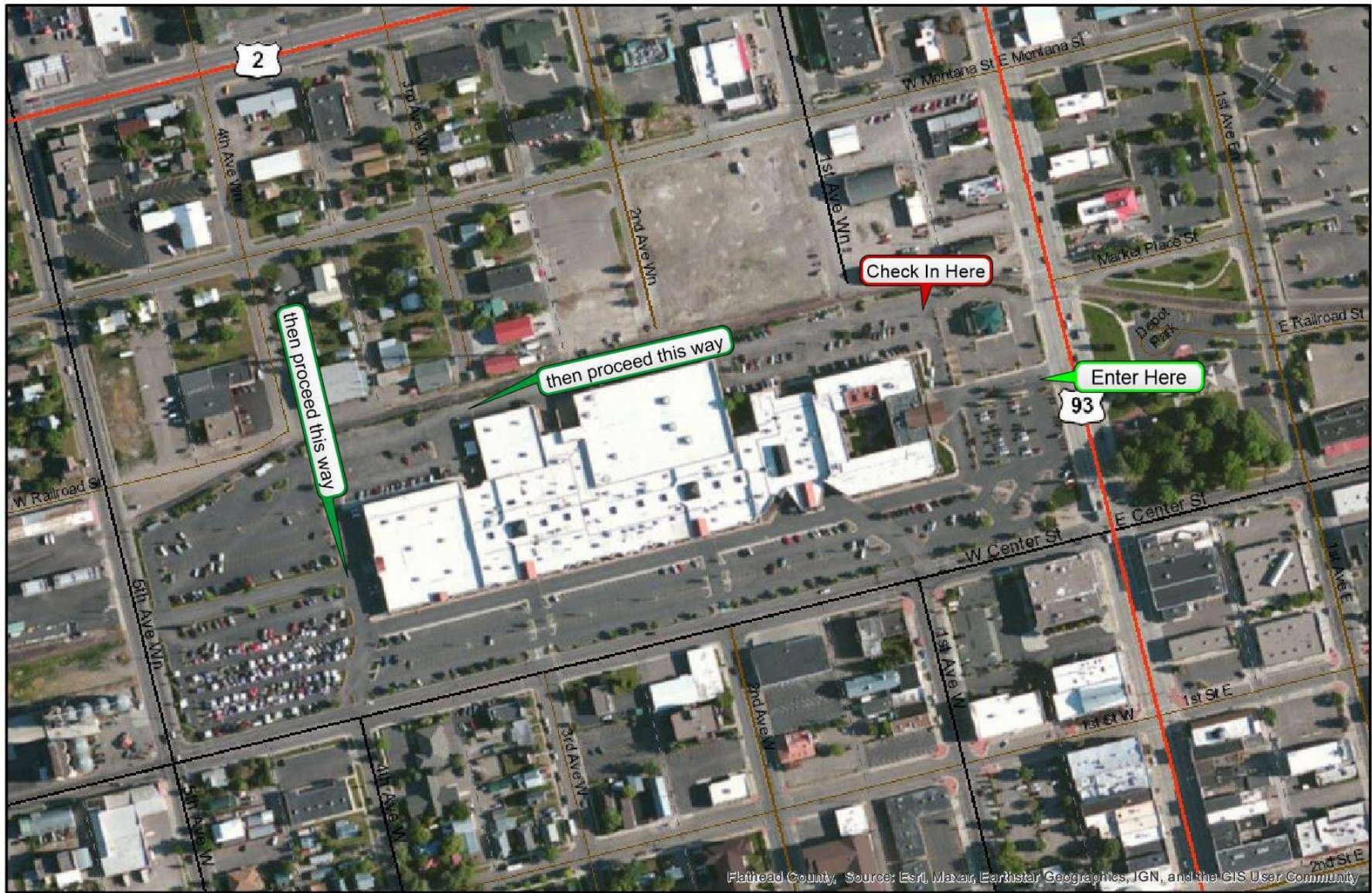
POC Signature

POC Phone #

POC email

Date

Name Printed

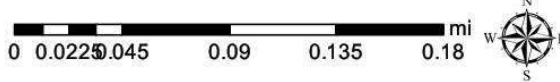


Flathead County, Source: Esri, Maxar, Earthstar Geographics, IGN, and the GIS User Community

Flathead County GIS Department



800 South Main Street
Kalispell, Montana 59901



The areas depicted on these maps are for illustrative purposes only and do not necessarily meet mapping, surveying, or engineering standards. Deriving conclusions from this map is done at the user's assumed risk.