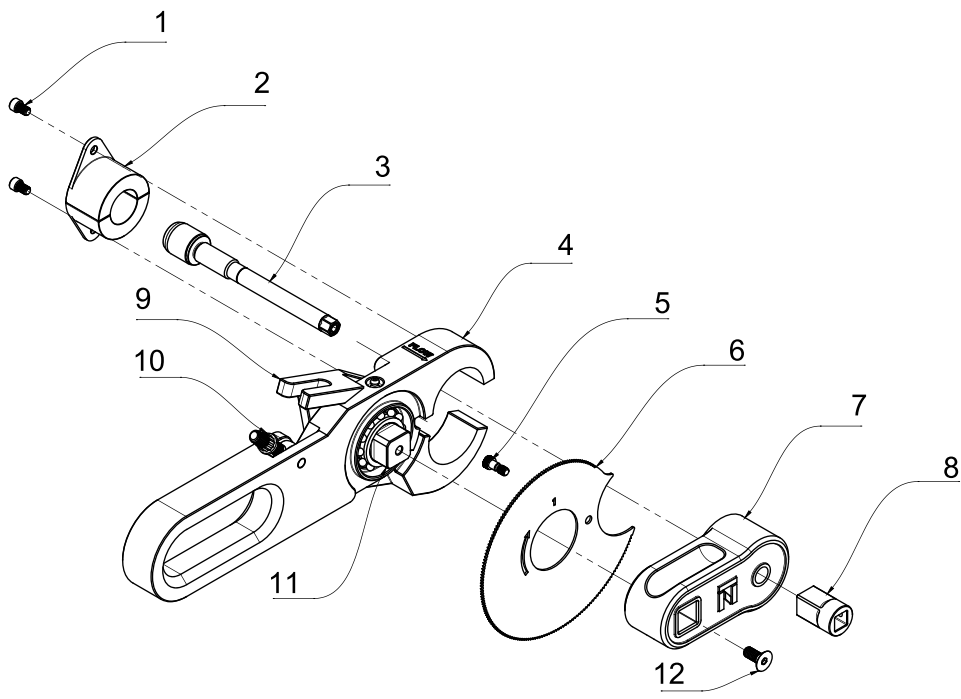
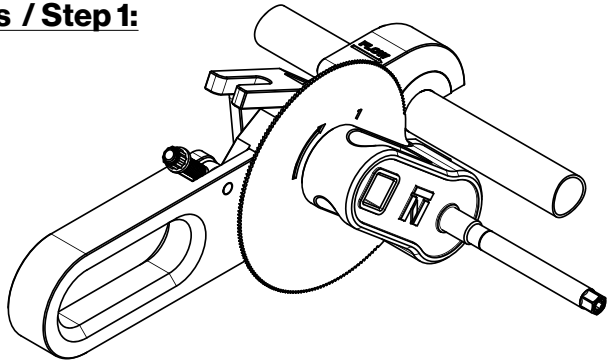


Niez Tech - PLUGGING MACHINE 1.0 PARTS LIST

ITEM	QTY	PART NUMBER	DESCRIPTION
1	2	PM-0112	ASSEMBLY BOLT
2	2	PM-0110B	SLEEVE 1"
3	1	PM-0106B	PLUG ASSEMBLY 1"
4	1	PM-0102	BODY ASSEMBLY
5	1	PM-0114	BLADE BOLT
6	1	PM-0103B	CUTTING WHEEL 1"
7	1	PM-0104	HUB
8	1	PM-0101	PLUG DRIVING BIT
9	1	PM-0105	JAW
10	1	PM-0111	JAW NUT
11	1	PM-0107	SHAFT
12	1	PM-0113	SHAFT BOLT



Instructions / Step 1:



1-A. Setting Up Plugging Machine:

Install correct size Sleeves (2), Blade 6, and Plug 3 into Body Assembly 4 of Plugging Machine.

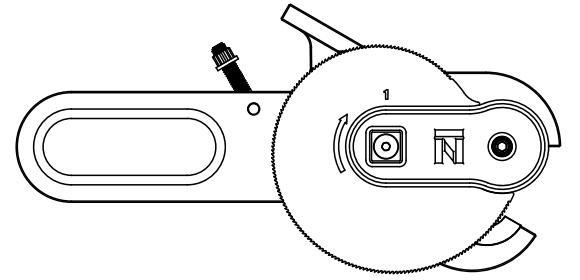
1-B. Rotate Hub 7 as shown so that Blade 6 will not interfere with water service line.

1-C. Rest Plugging Machine around water service line.

Step 6:

6-A.

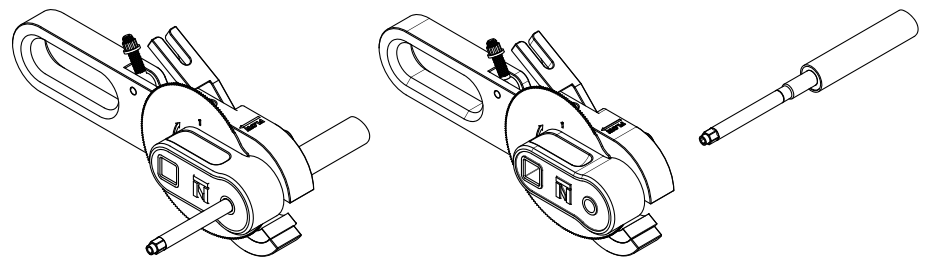
Loosen Jaw Nut 7 and open Jaw 9.



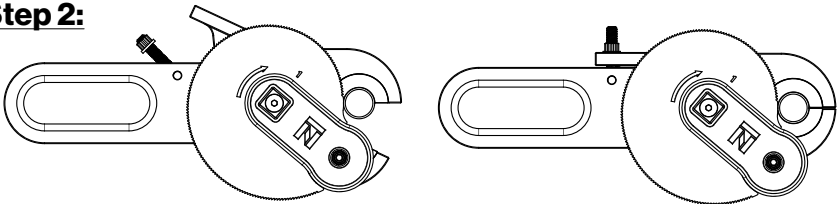
Step 7:

7-A.

Remove Machine from water service line, plug will remain in line.

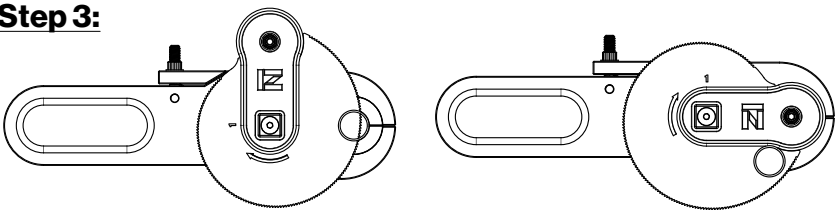


Step 2:



2-A. Close Jaws 9 around the water service line, tighten Jaw Nut 10.

Step 3:

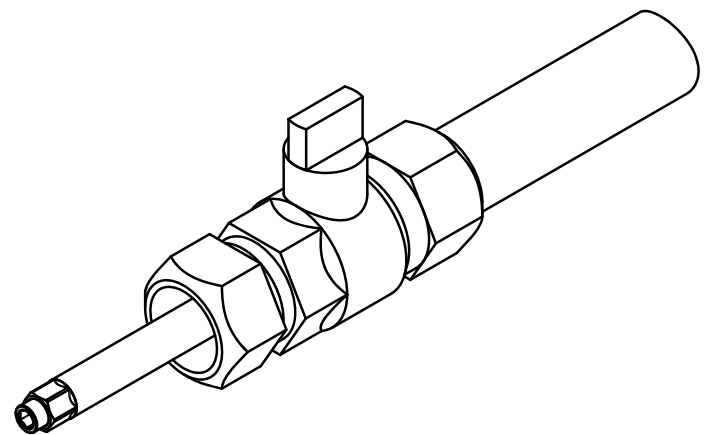


3-A. Install impact gun/wrench in square drive on Hub 7, rotate clockwise cutting the water service line.

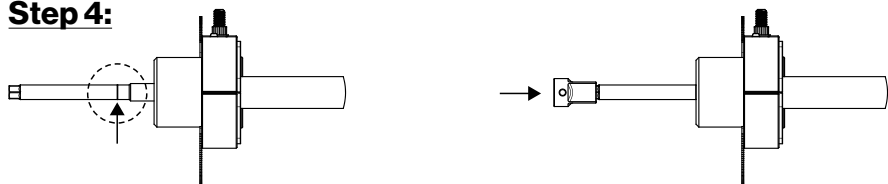
3-B. Rotate Hub 7 until Plug Assembly 3 stops over cut-end of water service line.

Step 8:

8-A. Install a curb stop (ball valve) onto water service line over Plug Assembly 3.



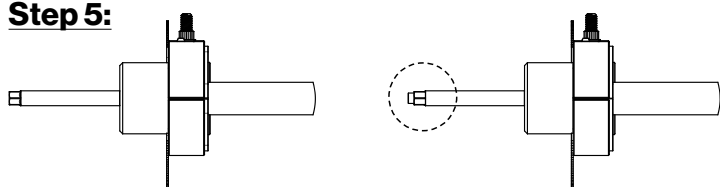
Step 4:



4-A. Install Plug Driving Bit 8 onto Plug Assembly 3.

4-B. Turn clockwise until circumferential line on Plug Assembly disappears into Hub 7.

Step 5:



5-A. Remove Plug Driving Bit 8 onto Plug Assembly 3.

5-B. While holding the external hex of Plug Assembly 3 in place with wrench, turn internal hex counter clockwise until tight.

Step 9:

9-A. Loosen Plug Assembly by turning internal hex clockwise relative to external hex.

9-B. Remove plug from water service line through curb stop.

9-C. Close curb stop.

