



**JATCO, INC.**  
ENVIRONMENTAL  
PROTECTION  
EQUIPMENT

## **Installation Instructions**

### **JATCO Environmental Protection Tank J-5000 SM-P w/1" Diaphragm Pump Skid**

The JATCO Environmental Tank must be installed at a level which will allow the waste liquids to be disposed of to gravity flow into the tank.

**IMPORTANT: The top of the tank must be below the level of waste liquids to be received.**

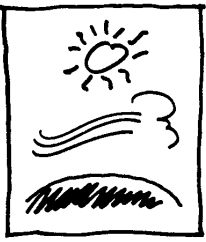
The discharge should be piped directly to the storage tank that is to receive the waste liquid. The discharge may be teed into an existing flow line, provided that a check valve is installed to prevent high pressure from returning to the discharge check valve on the JATCO tank.

Supply gas pressure is connected to the inlet of the level control valve (**C**) this **gas pressure must meet 70 PSI and not exceed 75 PSI. A separate supply gas pressure** is connected to the ¼" pilot valve (**J**) this **gas pressure must not exceed 100 PSI** for normal operation. No pressure regulator is provided as most applications for this device have pre-regulated gas pressure supplied.

Depressing the manual dump plunger (**F**) allows the operator to check function of the float control valve actuator. When the plunger is depressed, the tank will cycle once and return to the automatic operation when the plunger released. The plunger button should be returned to the extended position.

Listed below are a series of steps to follow if the JATCO tank fails to dump properly.

Be sure there is an adequate supply of gas pressure (**70-75 psi**), to the inlet connection at the level control valve. If there is enough pressure at the inlet connection, press down manual dump plunger (**F**) to empty tank, while venting through (**H**) during the cycle. If the JATCO tank fails to dump manually, remove connector tubing to ¼" pilot valve (**G**) to test for pilot pressure from level control valve (**A**). If level control valve is not sending pressure to the ¼" pilot valve (**G**) when depressing manual dump plunger (**F**), removal and or inspection of level control valve will be necessary. If pressure is present but ¼" pilot valve fails to operate, remove inspect and or replacement may be necessary.



**JATCO, INC.**

ENVIRONMENTAL  
PROTECTION  
EQUIPMENT

## **Service Guide**

### **JATCO Environmental Protection Tanks**

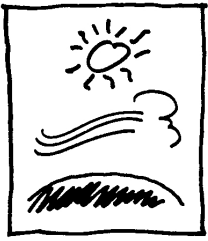
### **J-5000 SM-P w/1" Diaphragm Pump Skid**

Listed below are a series of steps to follow if the JATCO tank fails to dump properly.

The tank supply gas must have adequate volume and pressure. For best operation use 1" pipe for the tank supply gas plumbed as close to the tank as possible. Then reduce down to the tubing connections **(C)** and **(J)** on the JATCO tank.

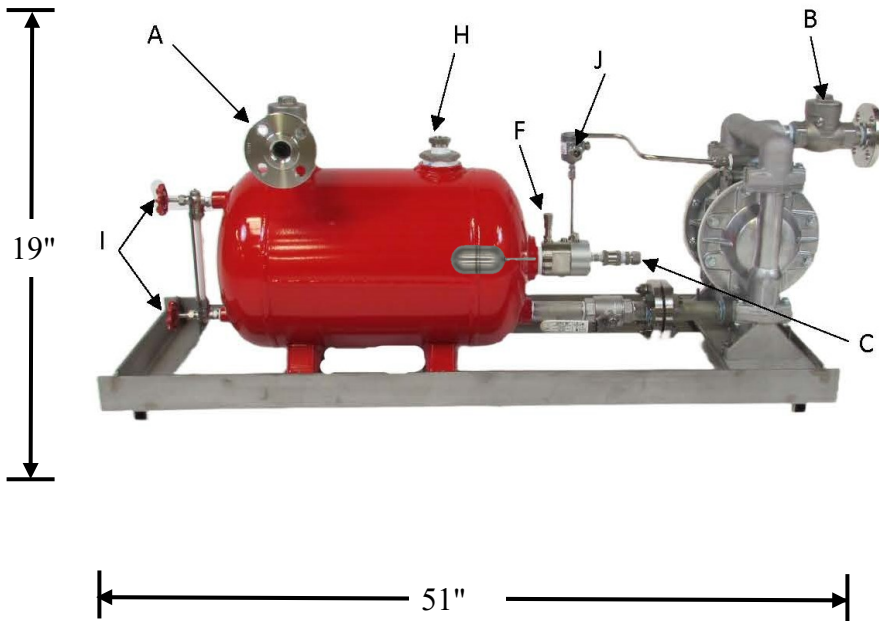
Be sure there is an adequate supply of volume and gas pressure (70-75 psi), to the inlet connection on the level control valve **(C)**, and (100psi max) to the ¼" pilot valve supply **(J)**. If there is enough pressure at the supply connections, press down on the manual dump plunger **(F)**. This should cause the tank to manually dump, while venting through **(H)** during the cycle. If the JATCO tank fails to dump manually, remove pilot signal connector tubing to ¼" pilot valve **(G)** to test for pilot signal from level control valve. If the level control is not sending a pilot signal to the pilot valve when depressing manual dump plunger, removal and or inspection of level control will be necessary and proceed to next step. If pilot signal pressure is present but pilot valve fails to operate, usually the pilot signal will escape from the actuator vent orifice. This indicates diaphragm failure in the pilot valve and replacement may be necessary.

Step #2 the side mount level controller has very few moving parts. If the valve is not operating properly, remove and inspect travel of float arm. If no obstruction is visually present but the float arm does not travel freely then removal of float arm is necessary. To remove float arm carefully drive float arm retaining pin out with a hammer and punch. Then inspect magnet and chamber for debris. If there is no obstruction with float arm assembly or tubing connections, replacement may be necessary.



**JATCO, INC.**  
ENVIRONMENTAL  
PROTECTION  
EQUIPMENT

## J-5000 SM-P w/1" Diaphragm Pump Skid



- A. Inlet Check Valve 2" 150# Flange JM5002-2
- B. Discharge Check Valve 1" 150# Flange JM5005-1
- C. Supply Gas Inlet ½" NPT Compression (70-75 psi)
- D. Liquid Level Control Valve JM5011 SM-P
- F. Manual Dump Plunger
- G. ¼" Pilot Valve JM5008x
- H. Vessel Vent 1" NPT
- I. Gauge Cocks & Sight Glass JM5009 & JM5010
- J. Tank Motive Gas Supply ½" NPT Compression 100 psi Max

