

# Anesthesia Machine

## Pressure Test:

When leak checking we are pressurizing the system to approx 30 cmH<sub>2</sub>O to detect leaks.

1



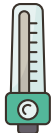
Place desired breathing circuit and bag on machine and seal the end of the breathing circuit by placing your thumb over the end or you can use a stopper of some sort.

2



Close the pop off valve (POV) by turning the valve to the right OR by using the momentary closure valve (these can sometimes leak, if that is the case then you must close the POV)

3



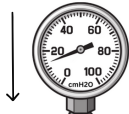
Using the flowmeter or by pressing the flush valve in incremental bursts to pressurize the system to 20-30 cm H<sub>2</sub>O on your pressure manometer; reservoir bag will distend.

4



Once the pressure reaches about **20-30 cmH<sub>2</sub>O**, stop flow of oxygen.

5



If the needle on the pressure manometer drops, and the flowmeter is off there is a leak in the system.

6



To quantify the leak, if greater than 300mL/min, call your local service tech.

a. Set the flowmeter at 300mL/min and watch the manometer; if it remains still or builds pressure your leak is "within tolerance".

7



**RE OPEN THE POP OFF VALVE** before you take your thumb off the end of the breathing circuit for these reasons:

- Failure to reopen the POV can result in patient fatality.
- Any gas in the system will go out the scavenge system.
- Any soda lime dust will not be blown into the inspiratory port/tubing.

A LEAK TEST SHOULD BE DONE ANYTIME YOU CHANGE THE BREATHING CIRCUITS OR BAGS AND ESPECIALLY AFTER CHANGING THE SODA LIME.

**VERIFY THE POP OFF VALVE HAS BEEN REOPENED!!!**