

Big, bold and beautiful

A guide to glare-stopping glamour

By OLIVIA ROWE
West Branch Life

Accessories have a powerful ability to morph an ensemble into something completely different with just a few changes — necklaces, bracelets, shoes, scarves and the oft-forgotten sunglasses. I readily admit that a pair of shades are the last thing I think about, usually an afterthought when I'm welcomed by a blinding sun when I step foot out the door. And generally, they're something I've picked up from a cheap store like Five Below, in case I lose them, which I'm prone to doing.

I'm determined to change my ways, however, because there's nothing like a sleek pair of sunglasses to really crank your style power up into high gear. Whether you're too cool for old-school in a pair of Ray Bans or kicking back cop-style in a pair of aviators, it's hard to go wrong.

This season's shades are all about embellishments and attention-grabbing silhouettes and shapes. Think: The bigger, the bolder, the better.

THE BIGGER

The day designers ditch oversize sunglasses will be a cold day in fashion hell. That's my hope, at least. The best part about them is that even if you shell out more for a designer pair — Chanel, anyone? — you're still getting more bang for your buck with extra sun protection. Large frames are incredibly pop-

ular so it'll be easy to find one that suits your taste, whether that's dual-toned, cat-eyed or those delightfully geeky new Gucci frames that look like you just stepped out of a fashion laboratory.

THE BOLDER

Excess, excess, excess. Look no further than Dolce & Gabbana, who piled on the accoutrements: enamel daisies, miniature cherubs and jewels. Opening Ceremony accessorized with an oversized pearl wave that sits atop their trendy black lenses in the vein of a visor so eccentric it practically makes the wearer look otherworldly. Chunky marble frames packed a punch in earthy blues and fiery reds with designers Michael Kors and Anna Sui.

Several designers have incorporated multiple trends into stunning frames for an even bolder look. There was no shortage of glitz glimmer at Missoni, Fendi and Prada, where designers combined ombre, futuristic and marble effects with subtle shimmer vibes that'll really make spring sparkle.

THE BETTER

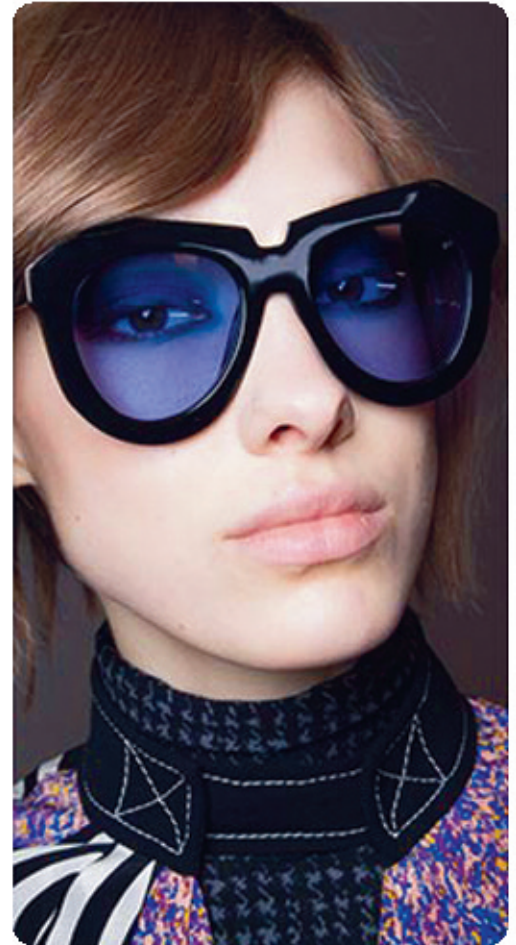
It's always fun to see the classic styles that are a hit every year with a modern twist or slight tweak. Look no further for a prime example of this than aviator sunglasses, frames that fit nearly all face shapes and sizes. In fact, aviators have gotten multiple makeovers this year from runway to runway. From leopard print-inspired Dior to thick, bold and futuristic at Just Cavalli — these frames are



no longer solely reserved for hard-core TV detectives.

The return of '90s fashion — well, the '70s, but I'm only 25 so let's go with '90s — still is in full swing and accessories have made no exception. The circular frames are back and better than ever, but wearers should exercise caution when considering a bug-eyed purchase, as the style certainly doesn't suit every face shape and easily can overwhelm or underwhelm a face. However, like the others on this list, there are plenty of variations to choose from, so with a little play and experimentation, you can find the perfect pair for you.

One size doesn't fit all



Choosing the right sunglasses for your face shape

Heart shapes:

If you have a heart-faced shape, the narrowest point will be at your jawline with the widest at your temples. For the best facial proportions, choose any frames that are wider at the top than the bottom. Cat-eyed frames, sport frames, shield, butterfly, rimless, aviator and retro square frames work especially well because they maintain a balanced look, shift attention downward and elongate your face.

Round shapes:

A round face is characterized by

wide cheekbones and some narrowing at the forehead and jawline. Ideal frames should be free of curved features and emphasize angles that will make your face appear longer, thinner and sharper. Contrast is key here — oversized, rectangular, square and angular frames are optimal.

Oval shapes:

Because of their relatively even and gentle features, oval faces are a lot more versatile than round and heart faces — any round or square style will work, as long as proportions make sense. Keep symmetry in mind and don't go too large or too small for your

face. Opt for glasses that cover the face from the eyebrows to the cheekbones. Retro, aviator and oversized are popular picks for this group.

Square shapes:

With sharp features that include a strong jaw, wide forehead and wide cheekbones, those that fall in this category should choose frames that will help round out their features for a more balanced look. Soft lines, rimless edges and contrast again come into play here. Frames that favor oval or circular curves are the best choices for this set.

~ OR