



# Quorum Travel Guide







# Introduction

We have put together the following information to celebrate the transport links to and from Quorum Park.

If you require more information or support, contact The Hub directly:

0191 6918142  
hub@quorumpark.com

## Contents

5	Overview
7	Accessing Newcastle
9	Public transport
13	Sustainable travel
15	Quorum amenities
17	Local amenities
19	Workforce
21	Headline results
23	Travel information – by location/postcode
25	Contact







# Situated perfectly

**With a central location and excellent road, rail and air links, Quorum Park can effortlessly serve one of the largest catchment areas in the North East.**

**This document provides a greater understanding of the park and reveals why Quorum is such an attractive location for occupiers.**

**The park benefits from excellent car and public transport links.**

There are over 150 buses visiting Quorum each day with services connecting the park to the city centre, airport and extended area.

Quorum is an edge-of-town business park rather than an out-of-town location.

As such, it benefits from the infrastructure of Newcastle, the vibrant capital of North East England, where incredible culture, thrilling sport, superb shopping, exciting nightlife and top-notch cuisine are just waiting to be discovered.

With so many different areas, each offering new sights, sounds and experiences, you'll be amazed at the quality of life on offer in North East England.

From your daily commute, to the choice of excellent schools, our outstanding health service and the cost of quality housing compared to other parts of the UK,

it all adds up to making the North East one of the best places in the country to live and work.

The park itself benefits from excellent retail and leisure amenities for staff, to help sustain the all important work/life balance.



The on-site facilities include a children's nursery, a bistro and coffee shop, a gym and restaurants.

Quorum's on-site management team is based at The Hub. Always on hand to provide staff and visitors with support and advice in relation to traveling to and from the park and making the best of your time here.

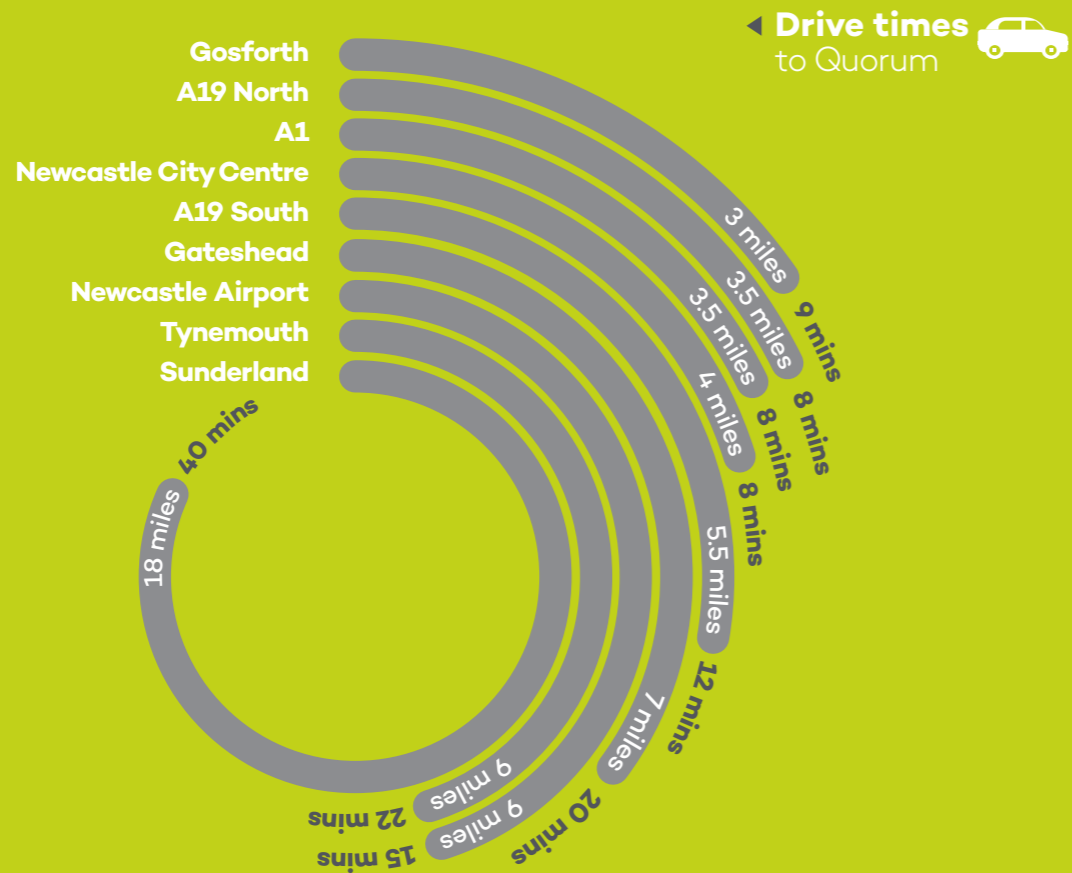


# Accessing Newcastle

Quorum Park is Edge of town, not out of town.  
Just 10 Minutes from Newcastle City Centre.

Commuter zones are well supported as Tyne & Wear benefits from higher levels of public transport than any other metropolitan area outside of London!

With excellent links by road, rail or air you're well connected at Quorum.







# Public transport

## Bus & Metro

Over 150 buses visit Quorum every day, with buses to nearby travel hub Four Lane Ends every 10 minutes and buses to the city centre and beyond every 15 minutes.

Quorum App users benefit from a free travel zone between here and the Metro Station linking them to easy travel around the whole region.

As well as the Q Express free zone, Quorum staff can receive a variety of discounts on local bus tickets including new flexible tickets designed to support hybrid workers.

The local metro station has links to Newcastle City Centre, the coast, airport and Sunderland.

### Metro Journeys

To Four Lane Ends from	Journey Time	Frequency
Newcastle	16 minutes	12 minutes
Gosforth	18 minutes	12 minutes
Gateshead	18 minutes	12 minutes
Tynemouth	19 minutes	12 minutes
Sunderland	53 minutes	12 minutes





## Train

Quorum is less than 20 minutes from Newcastle Central Station which sits on Edinburgh – Kings Cross line, opening Quorum up to the rest of the UK with ease.



Route	Journey Time
Newcastle - Edinburgh	1 hour 24 minutes
Newcastle - London	2 hours 51 minutes
Newcastle - Manchester	2 hours 17 minutes



# Sustainable travel

## Bike

Quorum Park benefits from close proximity to a number of local cycle and walking routes as well as having bike parking, showers and changing facilities available at each building situated within the park.

The historic Waggonways network was once used to haul coal across the region but now acts as a safe and scenic off road cycle grid connecting some of the UK's most stunning national cycle links.

Quorum is minutes from two such waggon way routes and therefore offers an offroad connection across the region.

Our local partners Bike 4 Health and Ride Electric offer a robust service to support cyclists whatever their experience or postcode. With try before you buy pool bikes, a fleet of eBikes, route advice and guided rides we can help you get back on the saddle for good.

### Cycle times to Quorum

Newcastle City Centre	24 mins
Longbenton	5 mins
Killingworth	12 mins
Gosforth	15 mins
Jesmond	17 mins
Wallsend	22 mins
Fenham	32 mins
Whitley Bay	45 mins

Source: Google Maps



## Car sharing

Access Kinto Join via the Quorum App and you can be matched with potential car share partners across the park.

You'll even earn rewards for doing so, cash in points for money off tokens to be used at Quorum retail and at our events.

## Electric vehicle charging

Managed by Tap, Quorum has 15 EV charge points - 4 located in Neon car park and 11 in Q7 car park, behind the retail.

Cost is £0.674 per kWh but if users subscribe to TAP (fees apply) then the rate is reduced to £0.606 kWh

Use the QR code available on the charger and then follow the instructions to start your charge.



Tap EV Terms & Conditions: Idle parking fees apply. Users - £2.640 GBP/hour. Subscribers - £2.376 GBP/hour. Plug in electric & Hybrid vehicles only. Park within marked bays. Vehicles must be charging to use these bays. Refer to local signage for all other parking management terms and conditions.





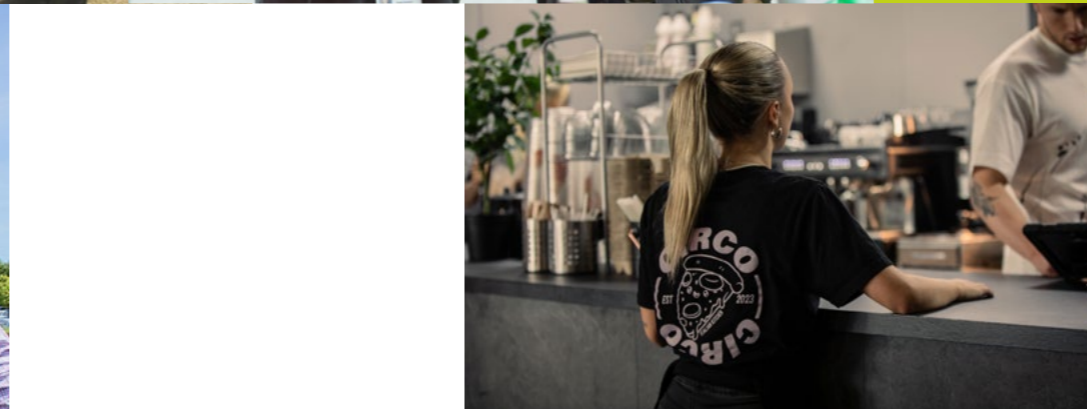
# Quorum amenities



Quorum Park provides a wide range of on-site amenities for employees and visitors to enjoy ensuring that Quorum is a fun and sociable place.

Quorum's on-site leisure and retail amenities include: Italian and Pan Asian restaurants; a private nursery, sports courts, a BBQ area, Greggs, bistro and outside catering.

Quorum has its very own Events Manager who encourages staff to get involved in various park activities including summer BBQs, food markets, sports days and charity events. The park also benefits from regular health and wellbeing sessions to include Yoga, learning seminars and networking events.







# Local amenities

As well as our fantastic on-site amenities at Quorum, the park is only a short commute away from a great variety of facilities and services. Some examples are listed here.



## Four Lane Ends

Just up the road from Quorum Park Four Lane Ends Interchange in the UK is a bustling transportation hub connecting major routes. Its strategic location allows for easy access to multiple destinations, making it a crucial junction for commuters, travellers, and businesses alike.

🕒 3 Mins



## Newcastle City Centre

Newcastle is a great city, one that never stands still, with a vibrant industrial history and a buzzing future. With fantastic bars, restaurants and shopping, there is something for everyone. Oh, and Howay the Lads!

🕒 10 Mins



## Northumberland Countryside

The Northumberland countryside is a picturesque haven adorned with rolling hills, vast meadows, and enchanting forests.

Its tranquil beauty, scattered with ancient castles and charming villages, invites exploration, and immerses visitors in a serene and idyllic rural landscape.

🕒 40 Mins



## Coastline

The Northumberland coastline captivates with its pristine sandy beaches, rugged cliffs, and dramatic landscapes. Its timeless charm, rich history, and unspoiled nature make it a magnet for adventurers, nature lovers, and those seeking tranquillity by the sea.

🕒 18 Mins



## Silverlink

The Silverlink Shopping Centre in North Tyneside offers a vibrant retail experience with a wide range of shops, restaurants, and entertainment options. Its convenient location and diverse offerings make it a popular destination for shoppers seeking a day of leisure and retail therapy.

🕒 10 Mins



## Nightlife

Newcastle's nightlife pulsates with energy, offering a diverse array of bars, clubs, and live music venues. The city's vibrant atmosphere, friendly locals, and renowned party spirit make it a hotspot for revellers seeking unforgettable nights filled with entertainment, dancing, and good times.

🕒 15 Mins



# Workforce



Travel to Quorum

Travel to Maxim



Travel to Quorum



You will find staff you want to keep, and who want to stay with you, adding genuine value and knowledge to your business as it grows. And with almost one million residents living within a 30-minute commute, there is a vast pool of talented individuals to help you drive your business forward. One quarter of that talent pool is educated to degree level – and that impressive figure continues to rise. Once qualified, around two-thirds choose to stay in the area to pursue a career, meaning businesses can recruit from a fresh wave of talented graduates, year after year.

**North Tyneside has a diverse economy comprising of traditional manufacturing and engineering industries as well as a mix of exciting new sectors including digital, health and life sciences and renewable energy.**

Our people are famed for their loyalty, adaptability, friendliness, and can-do attitude – Just ask brands like Verisure, Concentrix, Tesco Bank and SSCL who have located in North Tyneside to take advantage of the low attrition rates, motivated workforce and the famously happy staff who deliver fantastic service to their customers.

The North East has one of the most cost competitive workforces in the UK, offering companies an average 30% saving on staffing, skilled, or otherwise, compared to inner London, at the other end of the scale.

## Collaborative Region

Businesses moving to Quorum Park can benefit from support from the following organisations:







# Headline results

## Working from 30 example postcodes:

We selected 30 example postcodes of populated areas within the North East commuters may be travelling from and carried out some connectivity analysis.

### Travelling by car

**28** of the **30**  
example postcodes  
were within a



**18** of the **30**  
example postcodes  
were within a



**9** of the **30**  
example postcodes  
were within a



The longest drive time was 55 minutes, the shortest was 9 minutes.



### Travelling by public transport

**20** of the **30**  
example postcodes journey  
times were within



**4**  
were  
within

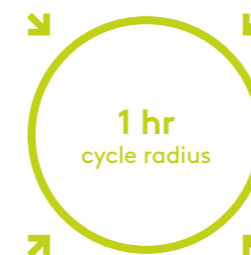


**8**  
were  
within



### Cycling

**21** of the **30**  
example postcodes  
were within a



**10**  
of those were  
within a



The shortest ride time  
was 12 minutes.

**Killingworth & Wideopen** 12 mins

### Live travel updates via our app

Our online commuter centre is based within the Quorum App.

- You'll be able to access the latest staff discounts
- The Quorum Express Pass
- Transport Advice
- Cycle Support

Scan to download







# Travel information – by location/postcode

	Location	Example Postcode	Distance	Drive Time	Via	PT Time	1st Leg	2nd Leg	3rd Leg	Cycle Time
City Centre	Haymarket	NE1 7PF	4.4 Miles	15 Mins	B1318 and A189	22 Mins	BUS Arriva X7 Haymarket - Quorum Park	-	-	22 Mins
	Quayside	NE1 3DE	4.6 Miles	17 Mins	A193	33 Mins	BUS Stagecoach X63 Monument - Quorum Park	-	-	31 Mins
	Jesmond	NE2 1JX	2.9 Miles	12 Mins	A189	23 Mins	BUS Arriva 52 Cradlewell - Quorum Park	-	-	20 Mins
West End	West Denton	NE5 2QZ	7.6 Miles	20 Mins	A1	1 hour 1 Min	BUS Stagecoach 62 West Denton Way - Monument	BUS Stagecoach X63 Monument - Quorum Park	-	33 Mins
	Fenham	NE4 9LJ	5.9 Miles	18 Mins	A189	40 Mins	BUS Stagecoach 36 St Thomas St - Haymarket	BUS Arriva X7 Haymarket - Quorum Park	-	30 Mins
	Kingston Park	NE3 2FP	6.9 Miles	17 Mins	A1	50 Mins	Train Kingstone Park - South Gosforth	BUS Arriva X7 South Gosforth - Quorum Park	-	26 Mins
Coast	Blyth South Beach	NE24 3PL	9.2 Miles	18 Mins	A189	50 mins	BUS Arriva X7 South Beach - Quorum Park	-	-	56 Mins
	Whitley Bay	NE26 1BG	9.0 Miles	22 Mins	A1148	56 Mins	Train Monkseaton - Four Lane Ends	FREE BUS Stagecoach 18,62 Arriva 52	-	50 Mins
	South Shields	NE33 2JQ	13.6 Miles	28 Mins	A19	1 hour 16 Mins	Triam South Shields - Four Lane Ends	FREE BUS Stagecoach 18,62 Arriva 52	-	54 Mins
Tyne Valley	Hexham	NE46 3NB	26.1 Miles	35 Mins	A69	1 hour 25 Mins	Train Hexham Station - Central Staion	Metro to Four Lane Ends	FREE BUS Stagecoach 18,62 Arriva 52	2 Hours 22 Mins
	Bellingham	NE48 2EH	36.7 Miles	55 Mins	A68	2 Hours 20 Mins	Bus Stagecoach 680 Bellinghm - Hexham Station	Train - Hexham Station - Manors	Bus X63 QuorumPark	3 Hours 20 Mins
	Prudhoe	NE42 5DQ	15.9 Miles	29 Mins	A695 and A1	1 Hour 20 Mins	Bus Stagecoach 10 Prudhoe - Haymarket	Bus Arrive X8 Haymarket - Quorum Park	-	1 Hour 15 Mins
South Tyneside	Jarrow	NE33 3LP	13 Miles	26 Mins	A19	1 Hour 15 mins	Train Chichester - Four Lane Ends	FREE Bus Stagecoach 18,62 Arriva 52	-	53 Mins
	Whitburn	SR6 7NH	15.7 Miles	30 Mins	A19	1 Hour 30 Mins	Bus E2 Dean Rd - Metro Station	Train - Metro Station - Four Lane Ends	FREE BUS Stagecoach 18,62 Arriva 52	1 Hour 18 Mins
	Hebburn	NE31 1UN	12.1 Miles	25 Mins	A19	1 Hour	Metro Hebburn Station - Four Lane Ends	FREE BUS Stagecoach 18,62 Arriva 52	-	58 Mins
Hadrians Wall (East)	Wallsend	NE28 8JA	4.8 Miles	13 Miles	A1058	50 Mins	Bus Stagecoach 22 Wallsend - Byker	BUS Stagecoach 62 Byker - Quorum Park	-	25 Mins
	Walker	NE6 2PB	4.4 Miles	15 Mins	A188	50 Mins	Bus Stagecoach 63 Byker - Four Lane Ends	FREE BUS Stagecoach 18,62 Arriva 52	-	25 Mins
	Byker	NE6 1ED	3.6 Miles	14 Mins	A188	35 Mins	Bus Stagecoach 62 Byker - Quorum Park	-	-	25 Mins
East Newcastle / North Tyneside	Killingworth	NE12 6YT	2.6 Miles	9 Mins	A189	15 Mins	BUS Stagecoach X63 Killingworth - Quorum Park	-	-	12 Mins
	Wideopen	NE13 6LN	3.7 Miles	11 Mins	A189	40 Mins	Bus Arriva 42 Wideopen - Dudley	Bus Arriva 52 Dudley - Quorum Park	-	12 Mins
	Gosforth	NE3 1HQ	3.2 Miles	13 Mins	A189	22 Mins	Bus Arriva 54 Gosforth - Quorum Park	-	-	15 Mins
South Northumberland	Blyth Central	NE24 1DR	10.5 Miles	25 Mins	A189	56 Mins	Bus Arriva X8 Blyth - Quorum Park	-	-	1 hour
	Morpeth	NE61 2TZ	12.9 Miles	23 Mins	A1	56 Mins	Bus Arriva X18 Morpeth - Gosforth	Bus Arriva 54 Gosforth - Quorum Park	-	1 hour 7 mins
	Bedlington	NE22 7JP	9.9 Miles	21 Mins	A189	58 Mins	Bus Arriva X21 Bedlington Station - Gosforth	Bus Arriva 54 Gosforth - Quorum Park	-	1 Hour 4 mins
Gateshead	Stadium	NE8 3NT	6.8 Miles	32 Mins	A193	47 Mins	Train Tyne Metro Station - Four Lane Ends	FREE BUS Stagecoach 18,62 Arriva 52	-	37 Mins
	Felling	NE10 9LS	7.7 Miles	31 Mins	B1426	49 Mins	Train Tyne Metro Station - Four Lane Ends	FREE BUS Stagecoach 18,62 Arriva 52	-	41 Mins
	Bensham	NE8 1SQ	7.2 Miles	27 Mins	A189	58 Mins	Train Tyne Metro Station - Four Lane Ends	FREE BUS Stagecoach 18,62 Arriva 52	-	35 Mins
Sunderland	City Centre	SR1 3AA	18.8 Miles	35 Mins	A19	1 Hour 10 Mins	Train St Peters - Monument	Bus X63 Monument - Quorum Park	-	1 Hour 30 Mins
	Seaburn	SR6 9AA	16.7 Miles	36 Mins	A19	1 hour 3 Mins	Train Seaburn - Monument	Bus X63 Monument - Quorum Park	-	1 Hour 21 Mins
	Washington	NE38 7SS	18 Miles	30 Mins	A19	1 Hour 25 Mins	Bus Go North East Washington - Heworth	Train Heworth - Four Lane Ends	FREE BUS Stagecoach 18,62 Arriva 52	1 Hour 9 mins







Quorum Park  
Benton Lane  
Newcastle upon Tyne  
NE12 8BU

0191 500 7787  
hub@quorumpark.com

For leasing enquiries please contact:

**AVISON  
YOUNG**

Tony Wordsworth  
0191 269 0508  
tony.wordsworth@avisonyoung.com

**savills**

Greg Davison  
07977 587303  
greg.davison@savills.com

  
**Quorum  
Park**