

# **Preference Updating Under Uncertainty:** Evidence from Responses to Global Warming

Alexander F. Gazmararian  
Princeton University

Helen V. Milner  
Princeton University

# Propose and Test Theory of Preference Change

# Propose and Test Theory of Preference Change

- How do preferences change in presence of uncertainty?

# Propose and Test Theory of Preference Change

- How do preferences change in presence of uncertainty?
- Political economy assumes certainty

# Propose and Test Theory of Preference Change

- How do preferences change in presence of uncertainty?
- Political economy assumes certainty, but individuals are often unsure

# Propose and Test Theory of Preference Change

- How do preferences change in presence of uncertainty?
- Political economy assumes certainty, **but individuals are often unsure**
- **Synthesize**: political economy and behavioral theories

# Propose and Test Theory of Preference Change

- How do preferences change in presence of uncertainty?
- Political economy assumes certainty, **but individuals are often unsure**
- **Synthesize**: political economy and behavioral theories
- Theorize direct experience

# Propose and Test Theory of Preference Change

- How do preferences change in presence of uncertainty?
- Political economy assumes certainty, **but individuals are often unsure**
- **Synthesize**: political economy and behavioral theories
- Theorize direct experience → belief, preference change



# Propose and Test Theory of Preference Change

- How do preferences change in presence of uncertainty?
- Political economy assumes certainty, **but individuals are often unsure**
- **Synthesize**: political economy and behavioral theories
- Theorize direct experience → belief, preference change
- Climate change application

# Propose and Test Theory of Preference Change

- How do preferences change in presence of uncertainty?
- Political economy assumes certainty, **but individuals are often unsure**
- **Synthesize**: political economy and behavioral theories
- Theorize direct experience → belief, preference change
- Climate change application
  - Economic model

# Propose and Test Theory of Preference Change

- How do preferences change in presence of uncertainty?
- Political economy assumes certainty, **but individuals are often unsure**
- **Synthesize**: political economy and behavioral theories
- Theorize direct experience → belief, preference change
- Climate change application
  - Economic model + climate experience data

# Propose and Test Theory of Preference Change

- How do preferences change in presence of uncertainty?
- Political economy assumes certainty, **but individuals are often unsure**
- **Synthesize**: political economy and behavioral theories
- Theorize direct experience → belief, preference change
- Climate change application
  - Economic model + climate experience data
  - Surveys in 123 countries mapped to subnational level (N=133,683)

# Propose and Test Theory of Preference Change

- How do preferences change in presence of uncertainty?
- Political economy assumes certainty, **but individuals are often unsure**
- **Synthesize**: political economy and behavioral theories
- Theorize direct experience → belief, preference change
- Climate change application
  - Economic model + climate experience data
  - Surveys in 123 countries mapped to subnational level (N=133,683)
  - 3-wave panel survey in US (N=9,500)

# Propose and Test Theory of Preference Change

- How do preferences change in presence of uncertainty?
- Political economy assumes certainty, **but individuals are often unsure**
- **Synthesize**: political economy and behavioral theories
- Theorize direct experience → belief, preference change
- Climate change application
  - Economic model + climate experience data
  - Surveys in 123 countries mapped to subnational level (N=133,683)
  - 3-wave panel survey in US (N=9,500)
- If facing damages, **experiential shocks**

# Propose and Test Theory of Preference Change

- How do preferences change in presence of uncertainty?
- Political economy assumes certainty, **but individuals are often unsure**
- **Synthesize**: political economy and behavioral theories
- Theorize direct experience → belief, preference change
- Climate change application
  - Economic model + climate experience data
  - Surveys in 123 countries mapped to subnational level (N=133,683)
  - 3-wave panel survey in US (N=9,500)
- If facing damages, **experiential shocks** → recognition

# Propose and Test Theory of Preference Change

- How do preferences change in presence of uncertainty?
- Political economy assumes certainty, **but individuals are often unsure**
- **Synthesize**: political economy and behavioral theories
- Theorize direct experience → belief, preference change
- Climate change application
  - Economic model + climate experience data
  - Surveys in 123 countries mapped to subnational level (N=133,683)
  - 3-wave panel survey in US (N=9,500)
- If facing damages, **experiential shocks** → recognition, salience



# Propose and Test Theory of Preference Change

- How do preferences change in presence of uncertainty?
- Political economy assumes certainty, **but individuals are often unsure**
- **Synthesize**: political economy and behavioral theories
- Theorize direct experience → belief, preference change
- Climate change application
  - Economic model + climate experience data
  - Surveys in 123 countries mapped to subnational level (N=133,683)
  - 3-wave panel survey in US (N=9,500)
- If facing damages, **experiential shocks** → recognition, salience, support

# Propose and Test Theory of Preference Change

- How do preferences change in presence of uncertainty?
- Political economy assumes certainty, **but individuals are often unsure**
- **Synthesize**: political economy and behavioral theories
- Theorize direct experience → belief, preference change
- Climate change application
  - Economic model + climate experience data
  - Surveys in 123 countries mapped to subnational level (N=133,683)
  - 3-wave panel survey in US (N=9,500)
- If facing damages, **experiential shocks** → recognition, salience, support
- Contributions to IPE

# Propose and Test Theory of Preference Change

- How do preferences change in presence of uncertainty?
- Political economy assumes certainty, **but individuals are often unsure**
- **Synthesize**: political economy and behavioral theories
- Theorize direct experience → belief, preference change
- Climate change application
  - Economic model + climate experience data
  - Surveys in 123 countries mapped to subnational level (N=133,683)
  - 3-wave panel survey in US (N=9,500)
- If facing damages, **experiential shocks** → recognition, salience, support
- Contributions to IPE, behavior

# Propose and Test Theory of Preference Change

- How do preferences change in presence of uncertainty?
- Political economy assumes certainty, **but individuals are often unsure**
- **Synthesize**: political economy and behavioral theories
- Theorize direct experience → belief, preference change
- Climate change application
  - Economic model + climate experience data
  - Surveys in 123 countries mapped to subnational level (N=133,683)
  - 3-wave panel survey in US (N=9,500)
- If facing damages, **experiential shocks** → recognition, salience, support
- Contributions to IPE, behavior, climate

# Political Economy Abstracts from Uncertainty

- Uncertainty is ubiquitous in politics

# Political Economy Abstracts from Uncertainty

- Uncertainty is ubiquitous in politics: **climate change**

# Political Economy Abstracts from Uncertainty

- Uncertainty is ubiquitous in politics: climate change, automation, ...

# Political Economy Abstracts from Uncertainty

- Uncertainty is ubiquitous in politics: **climate change, automation, ...**
- But political economy treats material effects as certain



# Political Economy Abstracts from Uncertainty

- Uncertainty is ubiquitous in politics: climate change, automation, ...
- But political economy treats material effects as certain
  - Economic models of income, assets, wealth (Lake 2009)

# Political Economy Abstracts from Uncertainty

- Uncertainty is ubiquitous in politics: climate change, automation, ...
- But political economy treats material effects as certain
  - Economic models of income, assets, wealth (Lake 2009)
  - Allows precise predictions

# Political Economy Abstracts from Uncertainty

- Uncertainty is ubiquitous in politics: climate change, automation, ...
- But political economy treats material effects as certain
  - Economic models of income, assets, wealth (Lake 2009)
  - Allows precise predictions
  - Can't determine best response if uncertain

# Political Economy Abstracts from Uncertainty

- Uncertainty is ubiquitous in politics: climate change, automation, ...
- But political economy treats material effects as certain
  - Economic models of income, assets, wealth (Lake 2009)
  - Allows precise predictions
  - Can't determine best response if uncertain
- Behavioral theories allow uncertainty

# Political Economy Abstracts from Uncertainty

- Uncertainty is ubiquitous in politics: climate change, automation, ...
- But political economy treats material effects as certain
  - Economic models of income, assets, wealth (Lake 2009)
  - Allows precise predictions
  - Can't determine best response if uncertain
- Behavioral theories allow uncertainty
  - Group attachment (Campbell et al. 1960)

# Political Economy Abstracts from Uncertainty

- Uncertainty is ubiquitous in politics: **climate change, automation, ...**
- But political economy treats material effects as certain
  - Economic models of income, assets, wealth (Lake 2009)
  - Allows precise predictions
  - Can't determine best response if uncertain
- Behavioral theories allow uncertainty
  - Group attachment (Campbell et al. 1960), elite cues (Zaller 1992; Lenz 2012)

# Political Economy Abstracts from Uncertainty

- Uncertainty is ubiquitous in politics: climate change, automation, ...
- But political economy treats material effects as certain
  - Economic models of income, assets, wealth (Lake 2009)
  - Allows precise predictions
  - Can't determine best response if uncertain
- Behavioral theories allow uncertainty
  - Group attachment (Campbell et al. 1960), elite cues (Zaller 1992; Lenz 2012), personal experience (Druckman and Lupia 2000)

# Political Economy Abstracts from Uncertainty

- Uncertainty is ubiquitous in politics: **climate change, automation, ...**
- But political economy treats material effects as certain
  - Economic models of income, assets, wealth (Lake 2009)
  - Allows precise predictions
  - Can't determine best response if uncertain
- Behavioral theories allow uncertainty
  - Group attachment (Campbell et al. 1960), elite cues (Zaller 1992; Lenz 2012), personal experience (Druckman and Lupia 2000), learning (Jervis 1976)



# Political Economy Abstracts from Uncertainty

- Uncertainty is ubiquitous in politics: **climate change, automation, ...**
- But political economy treats material effects as certain
  - Economic models of income, assets, wealth (Lake 2009)
  - Allows precise predictions
  - Can't determine best response if uncertain
- Behavioral theories allow uncertainty
  - Group attachment (Campbell et al. 1960), elite cues (Zaller 1992; Lenz 2012), personal experience (Druckman and Lupia 2000), learning (Jervis 1976)
  - **but indeterminate predictions**

# Synthesizing Political Economy and Behavior

# Synthesizing Political Economy and Behavior

- Model distributive effects: societal activities → income, assets, wealth

# Synthesizing Political Economy and Behavior

- Model distributive effects: societal activities → income, assets, wealth
  - Benchmark for preferences *if fully informed*

# Synthesizing Political Economy and Behavior

- Model distributive effects: societal activities → income, assets, wealth
  - Benchmark for preferences *if fully informed*
- **Experiential shocks**
  - Direct experience with material loss/gain

# Synthesizing Political Economy and Behavior

- Model distributive effects: societal activities → income, assets, wealth
  - Benchmark for preferences *if fully informed*
- **Experiential shocks** → belief, preference updating
  - Direct experience with material loss/gain

# Synthesizing Political Economy and Behavior

- Model distributive effects: societal activities → income, assets, wealth
  - Benchmark for preferences *if fully informed*
- **Experiential shocks** → belief, preference updating
  - Direct experience with material loss/gain
  - Learn about material effects of societal activities

# Synthesizing Political Economy and Behavior

- Model distributive effects: societal activities → income, assets, wealth
  - Benchmark for preferences *if fully informed*
- **Experiential shocks** → belief, preference updating
  - Direct experience with material loss/gain
  - Learn about material effects of societal activities
  - Experience is credible



# Synthesizing Political Economy and Behavior

- Model distributive effects: societal activities → income, assets, wealth
  - Benchmark for preferences *if fully informed*
- **Experiential shocks** → belief, preference updating
  - Direct experience with material loss/gain
  - Learn about material effects of societal activities
  - Experience is credible: **unmediated**

# Synthesizing Political Economy and Behavior

- Model distributive effects: societal activities → income, assets, wealth
  - Benchmark for preferences *if fully informed*
- **Experiential shocks** → belief, preference updating
  - Direct experience with material loss/gain
  - Learn about material effects of societal activities
  - Experience is credible: **unmediated, salient**

# Synthesizing Political Economy and Behavior

- Model distributive effects: societal activities → income, assets, wealth
  - Benchmark for preferences *if fully informed*
- **Experiential shocks** → belief, preference updating
  - Direct experience with material loss/gain
  - Learn about material effects of societal activities
  - Experience is credible: **unmediated**, **salient**
  - Differential updating based on priors

# Synthesizing Political Economy and Behavior

- Model distributive effects: societal activities → income, assets, wealth
  - Benchmark for preferences *if fully informed*
- **Experiential shocks** → belief, preference updating
  - Direct experience with material loss/gain
  - Learn about material effects of societal activities
  - Experience is credible: **unmediated, salient**
  - Differential updating based on priors
- Hypotheses: **experiential shocks** for individuals facing losses

# Synthesizing Political Economy and Behavior

- Model distributive effects: societal activities → income, assets, wealth
  - Benchmark for preferences *if fully informed*
- **Experiential shocks** → belief, preference updating
  - Direct experience with material loss/gain
  - Learn about material effects of societal activities
  - Experience is credible: **unmediated, salient**
  - Differential updating based on priors
- Hypotheses: **experiential shocks** for individuals facing losses
  - ↑ recognition of harm

# Synthesizing Political Economy and Behavior

- Model distributive effects: societal activities → income, assets, wealth
  - Benchmark for preferences *if fully informed*
- **Experiential shocks** → belief, preference updating
  - Direct experience with material loss/gain
  - Learn about material effects of societal activities
  - Experience is credible: **unmediated, salient**
  - Differential updating based on priors
- Hypotheses: **experiential shocks** for individuals facing losses
  - ↑ recognition of harm
  - ↑ salience of harm

# Synthesizing Political Economy and Behavior

- Model distributive effects: societal activities → income, assets, wealth
  - Benchmark for preferences *if fully informed*
- **Experiential shocks** → belief, preference updating
  - Direct experience with material loss/gain
  - Learn about material effects of societal activities
  - Experience is credible: **unmediated, salient**
  - Differential updating based on priors
- Hypotheses: **experiential shocks** for individuals facing losses
  - ↑ recognition of harm
  - ↑ salience of harm
  - ↑ political action to address harm

# Climate Change Application

- Uncertainty abounds



# Climate Change Application

- Uncertainty abounds
- Conflicting experience results (Howe et al. 2019)

# Climate Change Application

- Uncertainty abounds
- Conflicting experience results (Howe et al. 2019)
- But detached from model of preferences

# Study 1: Long-Run Influences on Preferences

# Study 1: Long-Run Influences on Preferences

- 2019 World Risk Poll (N=131,380)

# Study 1: Long-Run Influences on Preferences

- 2019 World Risk Poll (N=131,380)
- Create crosswalk to pair spatial data w/ 2,043 subregions, 123 countries

# Study 1: Long-Run Influences on Preferences

- 2019 World Risk Poll (N=131,380)
- Create crosswalk to pair spatial data w/ 2,043 subregions, 123 countries
- Outcome: recognition/salience of climate risk

# Study 1: Long-Run Influences on Preferences

- 2019 World Risk Poll (N=131,380)
- Create crosswalk to pair spatial data w/ 2,043 subregions, 123 countries
- Outcome: recognition/salience of climate risk
- Economic assessment model (Cruz and Rossi-Hansberg 2022)

# Study 1: Long-Run Influences on Preferences

- 2019 World Risk Poll (N=131,380)
- Create crosswalk to pair spatial data w/ 2,043 subregions, 123 countries
- Outcome: recognition/salience of climate risk
- Economic assessment model (Cruz and Rossi-Hansberg 2022)
- Long-run changes in temperature variability (NOAA)



# Study 1: Long-Run Influences on Preferences

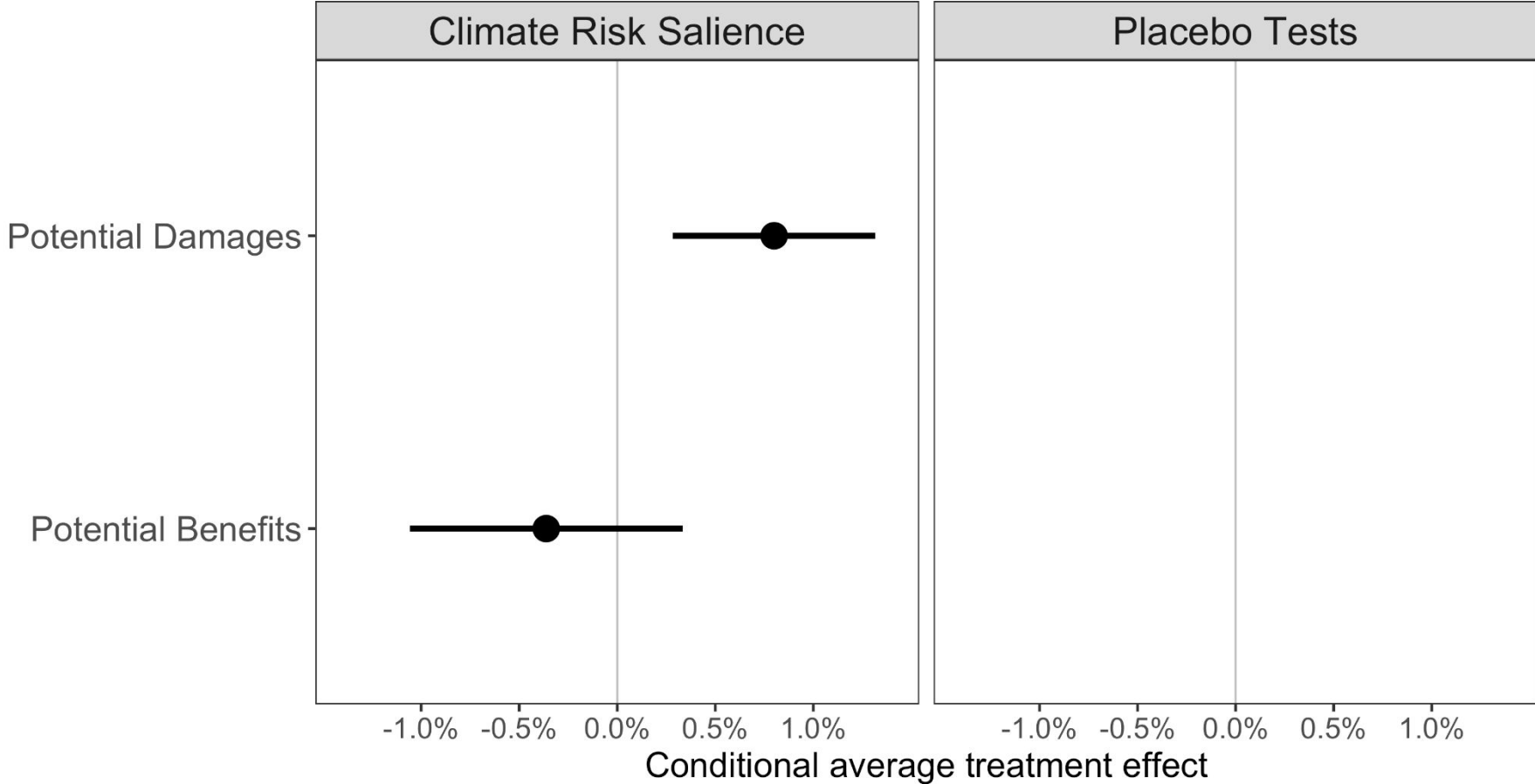
- 2019 World Risk Poll (N=131,380)
- Create crosswalk to pair spatial data w/ 2,043 subregions, 123 countries
- Outcome: recognition/salience of climate risk
- Economic assessment model (Cruz and Rossi-Hansberg 2022)
- Long-run changes in temperature variability (NOAA)
  - Plausibly exogenous, conditional on observables

# Study 1: Long-Run Influences on Preferences

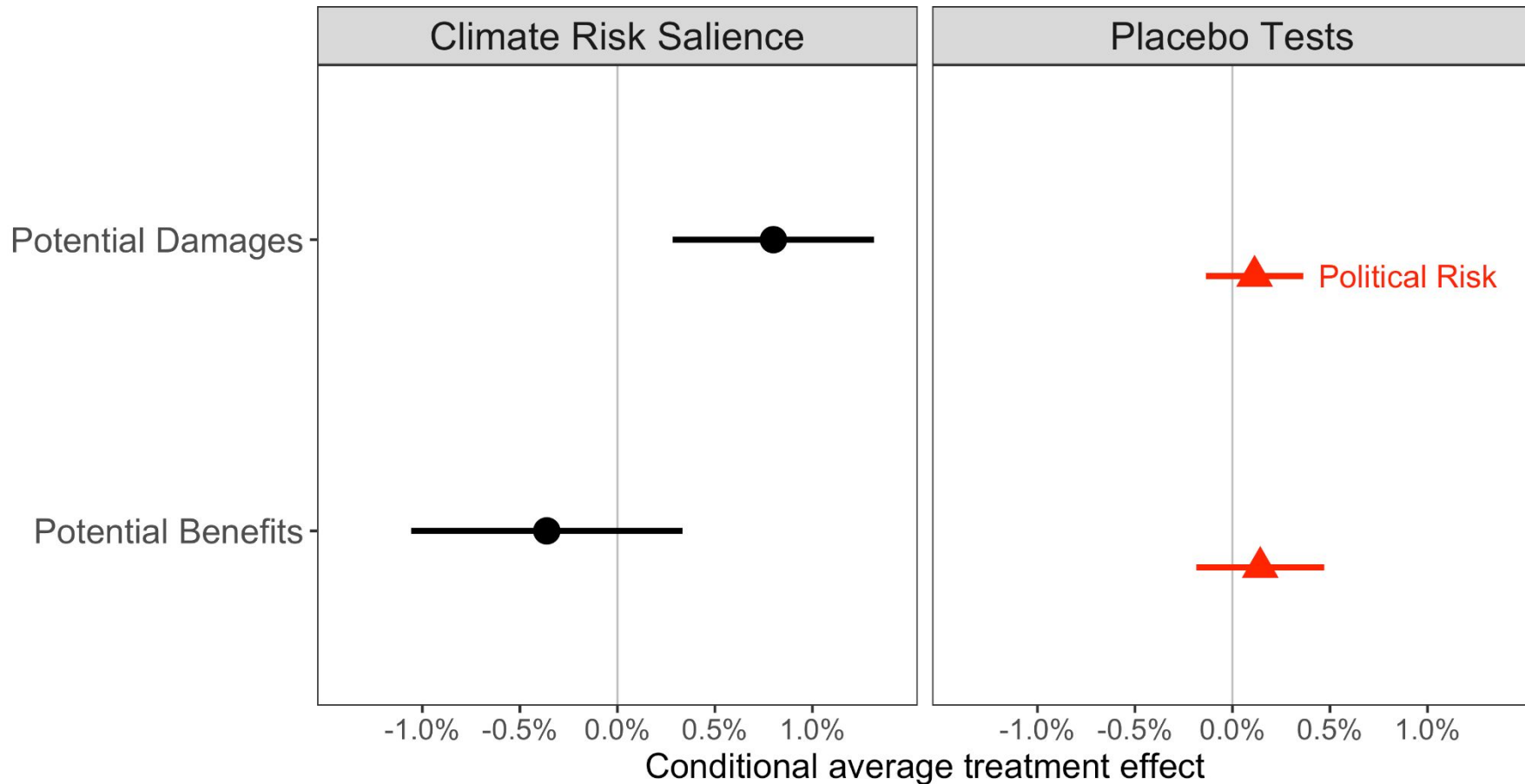
- 2019 World Risk Poll (N=131,380)
- Create crosswalk to pair spatial data w/ 2,043 subregions, 123 countries
- Outcome: recognition/salience of climate risk
- Economic assessment model (Cruz and Rossi-Hansberg 2022)
- Long-run changes in temperature variability (NOAA)
  - Plausibly exogenous, conditional on observables
- Estimating equation:

$$Y_i = Damage_i + Temp_i + \delta(Damage_i \times Temp_i) + X_i^T \beta + \eta + \varepsilon_i$$

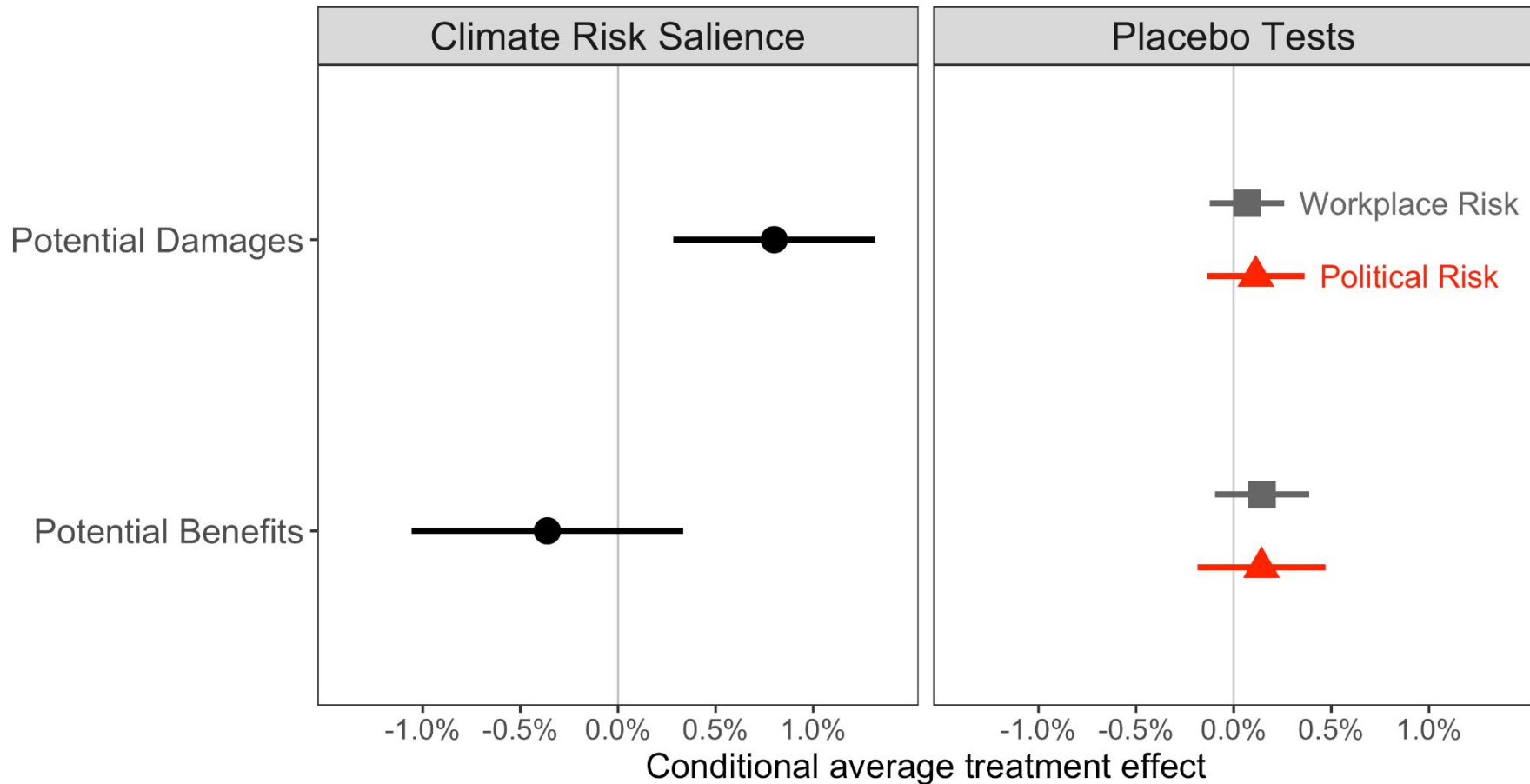
# Long-Run Experience Shocks → Climate Salience



# Long-Run Experience Shocks → Climate Salience



# Long-Run Experience Shocks → Climate Salience



# Study 2: Short-Term Change in Preferences

- 2010-2014 CCES panel study (N=9,500)

# Study 2: Short-Term Change in Preferences

- 2010-2014 CCES panel study (N=9,500)
- Outcome: climate belief and preference for action

# Study 2: Short-Term Change in Preferences

- 2010-2014 CCES panel study (N=9,500)
- Outcome: climate belief and preference for action
- Economic assessment model (Hsiang et al. 2017)



# Study 2: Short-Term Change in Preferences

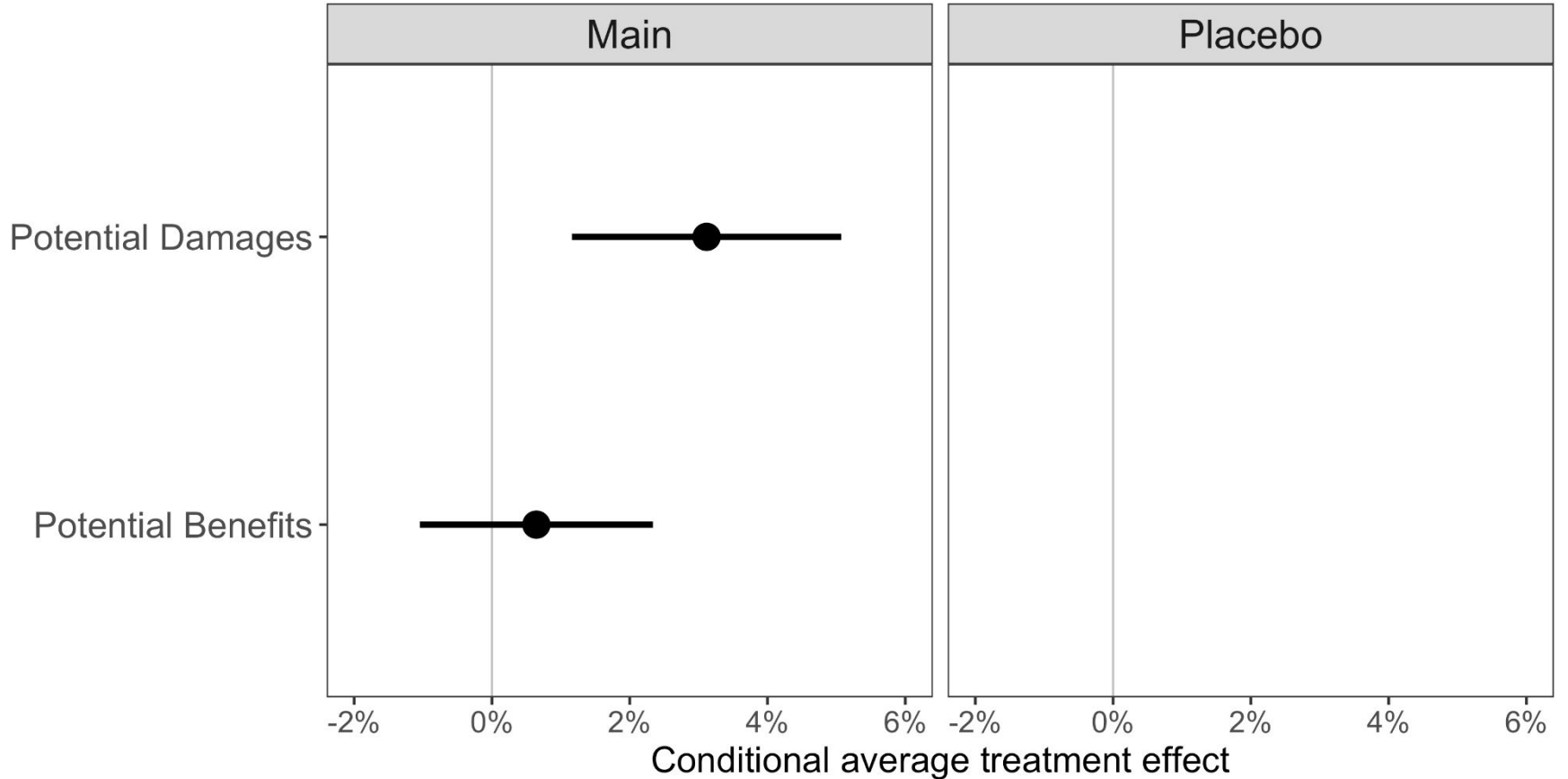
- 2010-2014 CCES panel study (N=9,500)
- Outcome: climate belief and preference for action
- Economic assessment model (Hsiang et al. 2017)
- Wildfires as experience shocks (FEMA disaster declarations)

# Study 2: Short-Term Change in Preferences

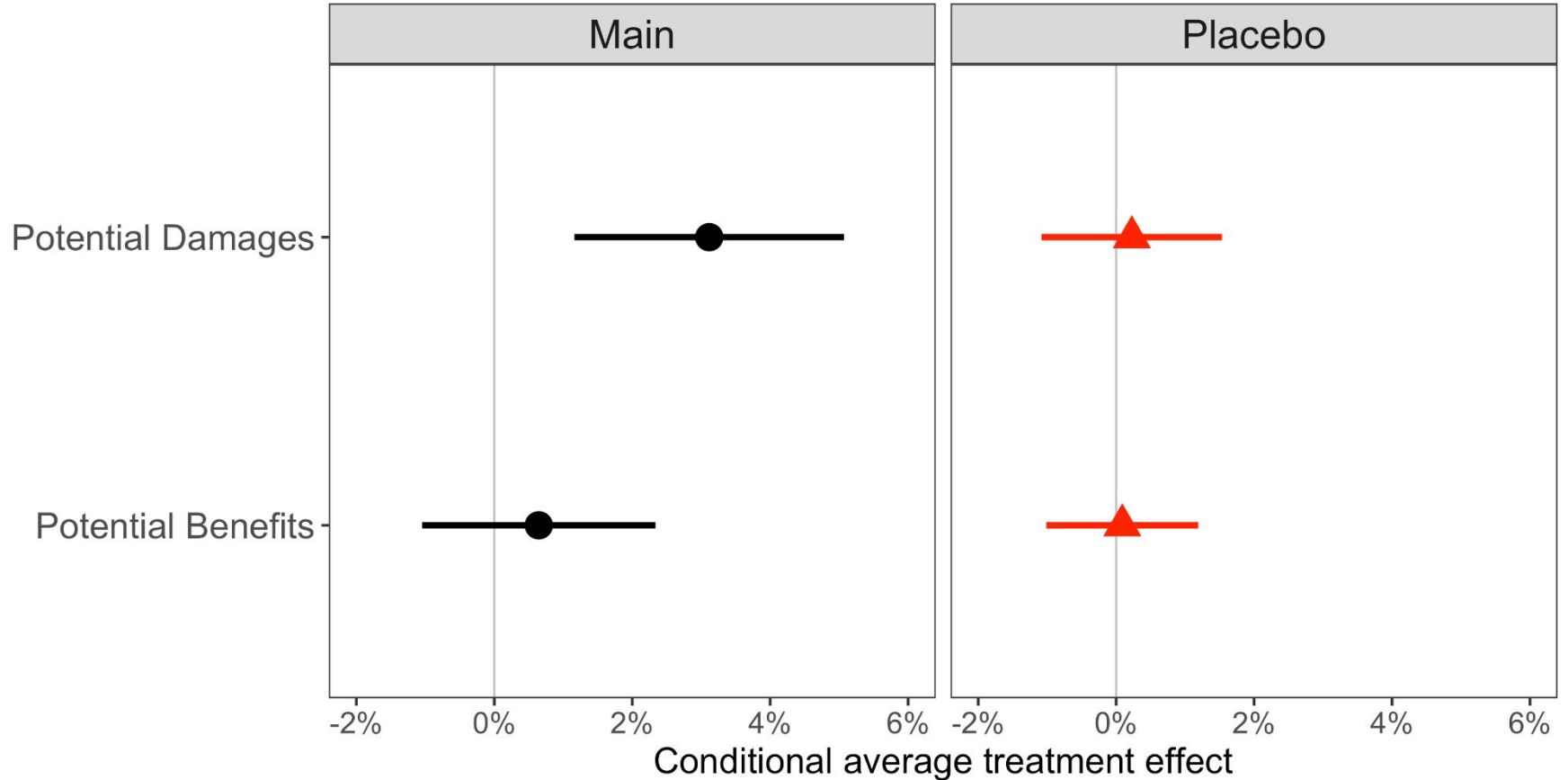
- 2010-2014 CCES panel study (N=9,500)
- Outcome: climate belief and preference for action
- Economic assessment model (Hsiang et al. 2017)
- Wildfires as experience shocks (FEMA disaster declarations)
- Estimating equation:

$$Y_{it} = \text{Damage}_i + \text{Fire}_{it} + \delta(\text{Damage}_i \times \text{Fire}_{it}) + X_{it}^T \beta + \lambda_i + \eta_t + \varepsilon_{it}$$

# Wildfires → Climate Belief and Preference Change



# Wildfires → Climate Belief and Preference Change



# Contributions of **'Preference Updating Under Uncertainty'**

- Synthesis provides framework for preferences under uncertainty

# Contributions of '**Preference Updating Under Uncertainty**'

- Synthesis provides framework for preferences under uncertainty
- Learn right lessons from experiences (contra Achen and Bartels 2016)

# Contributions of 'Preference Updating Under Uncertainty'

- Synthesis provides framework for preferences under uncertainty
- Learn right lessons from experiences (contra Achen and Bartels 2016)
- Reconcile conflicting results in climate politics

# Appendix

- [Study 1 question](#)
- [Study 2 question](#)



# Study 2: Outcome Measure

*From what you know about global climate change or global warming, which one of the following statements comes closest to your opinion?*

**Global climate change is not occurring, this is not a real issue.**

Concern about global climate change is exaggerated. No action is necessary.

We don't know enough about global climate change, and more research is necessary before we take any actions

There is enough evidence that climate change is taking place and some action should be taken

**Global climate change has been established as a serious problem, and immediate action is necessary**

# Study 1: Outcome Measure

*In your own words, what is the greatest source of risk to your safety in your daily life?*