

General Plan Visioning Workshop

1) What are 3 Community ASSETS in Sonoma?

- What do you value most about Sonoma?
- What makes this a special place to live or work?
- What are your favorite things about this City?

2) What 3 CHALLENGES are Sonoma facing?

- What issues or challenges are facing the City that need to be addressed in the General Plan?



General Plan Visioning Workshop

3) What Are Your Visions for the Future of Sonoma?

- What does the ideal or dream City look and feel like?
- Who lives, works, and plays there in the future?
- What is going on in the City?
- What do you hope stays the same?



General Plan Visioning Workshop

Vision Statement

The General Plan Update should be guided by a Vision Statement. The Vision Statement should be concise and clear, and should articulate the overarching goals of the community. For example:

Sonoma is a beautiful, environmentally friendly, and safe place, widely recognized as one of the most desirable cities in Northern California to live, visit, and do business. Ours is a diverse community where residents and their children can and want to remain.

Please develop a Vision Statement for the Sonoma General Plan Update. Your Vision Statement should be 3-4 sentences long, and should include your most important guiding principles.

- What Are Your Visions for the Future of Sonoma?
- What does the ideal or dream City look and feel like?
- Who lives, works, and plays there in the future?

The Vision Statement is a description of what Sonoma wants to become through the implementation of the General Plan. The Vision Statement provides a sense of purpose and mission for the General Plan, and sets the tone for the Plan's guiding principles to aid in the development of goals, policies and actions that will guide development in the coming years.

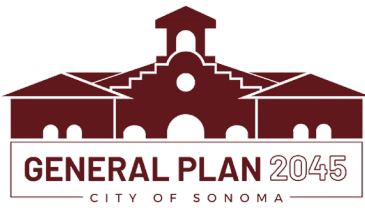
Please write your Vision Statement the space provided below.



General Plan Visioning Workshop

Example Vision Statements for other California cities

- In 2040 our city is a safe, beautiful, vibrant and livable community with tree-lined streets, open space, public art, high-quality architecture and state-of-the-art infrastructure. We enjoy a balance of residential, schools, retail, commercial and industrial uses and services that enhance our quality of life, support the fiscal health of the City and sustain a robust local economy. Downtown San Carlos is the heart of the community –a place to experience and savor the joys of daily life while enjoying a mix of stores and services.
- Our city..... a mosaic of diverse people and thriving unified neighborhoods joined together by beautiful, accessible open spaces and well-landscaped roadways offering enhanced mobility for people and goods; safe place to live, work and play; quality educational opportunities; engaging gathering places; world class entertainment; recreational, spiritual, and cultural amenities available for all; and, a variety of economic opportunities for its workforce.
- In 2035, our city is a highly desirable community to live, learn, work and recreate. It has maintained its small-town feel while maturing into an attractive, vibrant, and sustainable city that celebrates its architectural heritage and cultural diversity. We are a healthy community with livable neighborhoods, a thriving downtown, well maintained infrastructure, excellent schools and recreational amenities connected by a seamless network of trails and paths. The city is the region's center of agricultural technology and food production, and is recognized globally as a leader in sustainable agriculture. The community is prosperous and fiscally sound, offering abundant employment opportunities to its diverse and creative workforce. Woodland has become a destination for visitors seeking to experience its unique agricultural, historical, recreational, cultural and entertainment amenities.
- Our city is a desirable community to live, learn, work, and play. Our city has maintained its small-town character and feel, while growing into a healthy and vibrant mid-size city that celebrates its surrounding environmental resources, agricultural heritage, and cultural diversity. Our community is healthy, safe and family-oriented, with thriving schools, parks, shops, entertainment, and businesses.

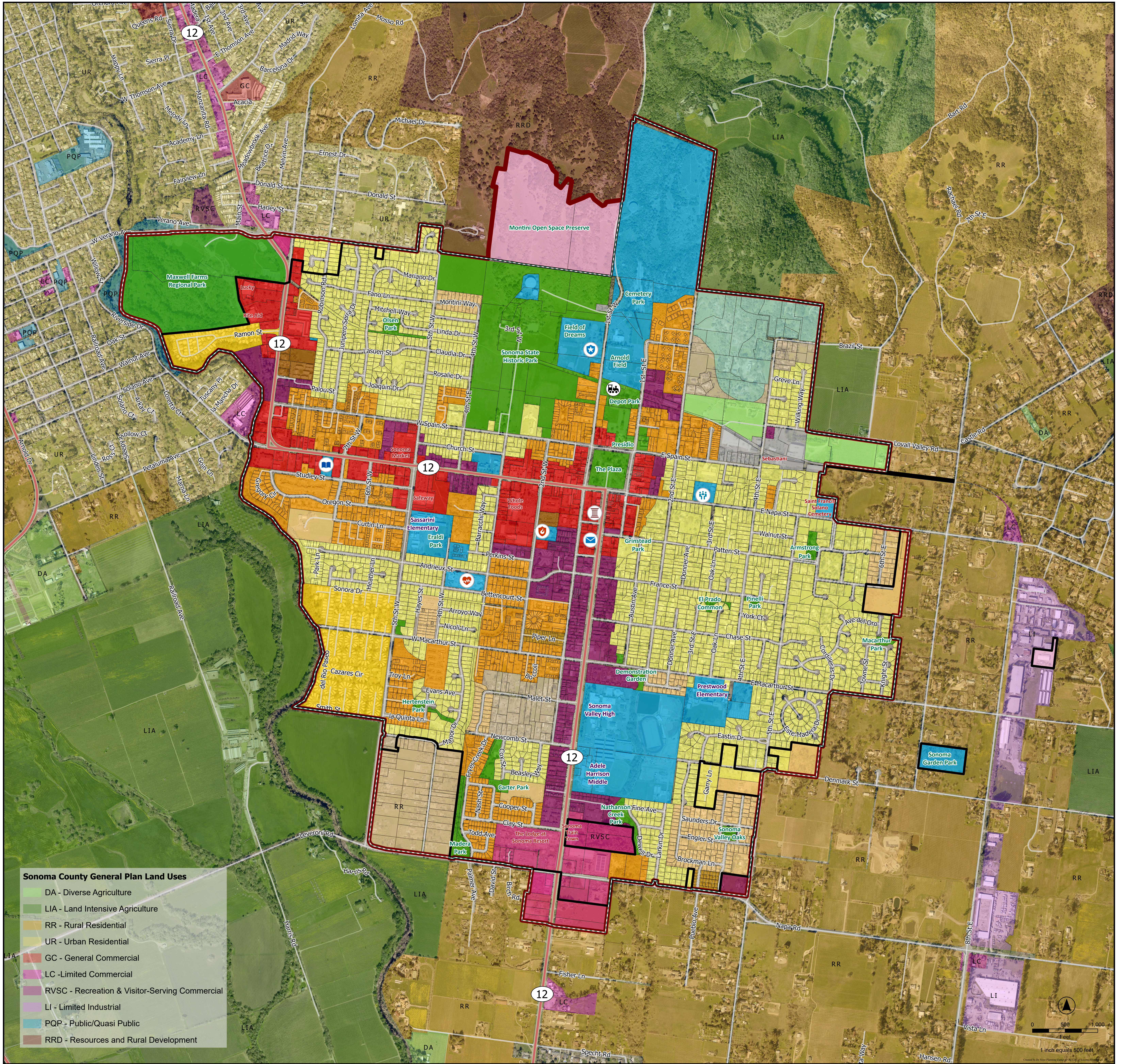


General Plan Visioning Workshop

4) Where are the City's key destinations or community gathering places?

- What are the greatest assets in these areas?
- How can these areas be improved?
- Where should new community gathering areas or focal points be located?
- Are new uses or developments needed in the City? What? Where?
- Are there certain areas in the City that are in need of revitalization or change?

GENERAL PLAN LAND USE



Sonoma County General Plan Land Uses

DA - Diverse Agriculture
LIA - Land Intensive Agriculture
RR - Rural Residential
UR - Urban Residential
GC - General Commercial
LC - Limited Commercial
RVSC - Recreation & Visitor-Serving Commercial
LI - Limited Industrial
PQP - Public/Quasi Public
RRD - Resources and Rural Development

City of Sonoma General Plan Land Uses

Rural Residential	Housing Opportunity	Wine Production	Undesignated
Low Density Residential	Mobile Home Park	Public Facility	Planning Areas
Sonoma Residential	Mixed Use	Park	Sonoma City Boundary
Medium Density Residential	Commercial	Hillside	Sonoma Sphere of Influence
High Density Residential	Gateway Commercial	Agriculture	Sonoma Urban Growth Boundary

Points of Interest

City of Sonoma Police Department	Sonoma Valley Regional Library
Sonoma Valley Fire Department	Sonoma Community Center
Sonoma Valley Hospital	Depot Park Museum
Post Office	Sonoma Valley Museum of Art

