

# PISGAH AREA SORBA

ADVOCACY | EDUCATION | STEWARDSHIP



2022 Annual Report



[www.pisgahareasoba.org](http://www.pisgahareasoba.org)

Hello!

Thank you for reading our first ever Annual Report. Pisgah Area SORBA has experienced a lot of new and exciting developments over the last few years. We hope this report will give you some insight to some of the work we've been up to in and around the Pisgah Ranger District. Speaking of firsts, I am honored to be the first Executive Director for Pisgah Area SORBA. I have been humbled to meet all of the exceptional volunteers who, for years, have been pouring their hearts and souls into the trails we all love and enjoy. Without the dedication of our volunteers and support from our partners, the trails in Pisgah, along with the forests they lead us through, would undoubtedly be in worse shape.

There are so many individuals and organizations who help us achieve our mission of building and maintaining world-class, sustainable trails here in Western North Carolina. We have tried our best to thank all of them in this report while providing some additional insights into the scope of work we have accomplished in the past year or so. As we have surely left some people out so, I want to take this opportunity up front to say THANK YOU to everyone who has spent time clearing a drain, building a grade dip, clearing a tree, trimming brush, installing rock armor, staffing our tent at events, writing a grant, managing our social media, and the countless number of additional tasks needed to meet our mission.

Once again, I am humbled by the commitments our volunteers continue to make. It is my honor to do everything I can to ensure our volunteers are continually provided with opportunity to care for the trails we all need and love. Thank you again for reading our first ever annual report. We are thrilled to share it with you.



Natalie Narburgh  
Executive Director



# 2022 TRAIL CREW LEADERS

Allen Frost  
Andrew Bick\*  
Andrew Holcombe  
Austin Bankert  
Chad Davis  
Chadd Kittle  
Chuck Carlson  
Craig Ruhland  
David Bird  
David Tate  
Freddie Carpenter  
Glenn Middleton  
Jack Henderson  
Jamie Arkfeld  
Jan Ferebauer  
Jared Hartman  
Jon Lane\*  
Jonathan Landry  
Kevin Booth

Marc Clayton  
Matt Holzenkamp  
Matt Kirby  
Max Eason  
Michael Nuckols  
Mike Ferrarro  
Mike Gaffney  
Natalie Arkfeld  
Nate Johnson  
Rick Houck  
Rusty Barlow  
Sam Leuthold  
Scott Randall\*  
Trent Duncan  
Tricia Davis  
Tyler Donaldson  
Will Avent  
William Velthaus\*

*\*Area Trail Coordinators*



*Tricia Davis*



*Will Avent*



*Freddie Carpenter*

# 2022 LEADERSHIP

## Board of Directors

Abi Fuesler - Events Chair

Chad Davis - Website

Claire Tuttle - Member at Large

Craig Ruhland - President

Daniel Sapp - 1st. Vice President/Communications Chair

Douglas Miller - 2nd Vice President/Fundraising Chair

Jared Hartman - Trail Crew Coordinator

Mike Gaffney - Treasurer

Rick Houck - Governance Chair

Stacey Wiedrich - Member at Large

Tom Tomaka - Secretary

## Additional Leadership & Support

Glen Middleton - Training and Trail Adopter Coordination

Jack Henderson/Pisgah Map Co. - Map/Cartography Support

Nina Machnowski - Social Media Coordinator



*Chad Davis*



*Abi Fuesler*



*Craig Ruhland*

# PISGAH AREA SORBA

## ACCOMPLISHMENTS '20 - '22

-SPONSORED OVER **210** TRAIL WORK DAYS.

-HIRED A FULL-TIME **EXECUTIVE DIRECTOR**.

-COMPLETED MAJOR RE-ROUTE ON **BLACK MOUNTAIN TRAIL** WITH A NEW, MORE SUSTAINABLE LONG-TERM ALIGNMENT **-\$124K**

-LOGGED **5,233 HOURS** OF TRAIL WORK SINCE 2020, WHICH BRINGS A VALUE OF OVER **\$150K OF LABOR** TO OUR LOCAL TRAIL NETWORK.

-**TRAIL WORK OUTREACH** THRU Can'D AID, LOCAL NICA TEAMS, FRENCH BROAD ACADEMY, CLUB de EXPLORADORES, UNIVERSITIES, ETC.

-COMPLETED **MAJOR MACHINE RECLAMATION** ON SEVERAL TRAILS: FLETCHER, IFG, LITTLE HICKORY TOP, LEDFORD, THRIFT COVE, WOLF, ETC.

-PARTNERED WITH **ASHEVILLE ON BIKES** FOR AVL UNPAVED PROJECT.

-PLANNING MAINTENANCE, RE-ROUTE, USE CHANGES AND MORE ON **BUTTER GAP AREA** TRAILS PROJECT. COMING SUMMER OF '23 **-\$300K**.

-COMPLETED **RICHMOND HILL BIKE PARK**, BRIDGES & TRAIL REWORK.

-BEGAN USING CANYCOM (THANKS **COGNATIVE MTB!**) FOR TRAIL WORK.

-PURCHASED **BOBCAT MT55** W/ HELP FROM FOX FACTORY TRAIL TRUST.

-HIRED **PROFESSIONALS** TO TRAIN (12) NEW TRAIL CREW LEADERS.

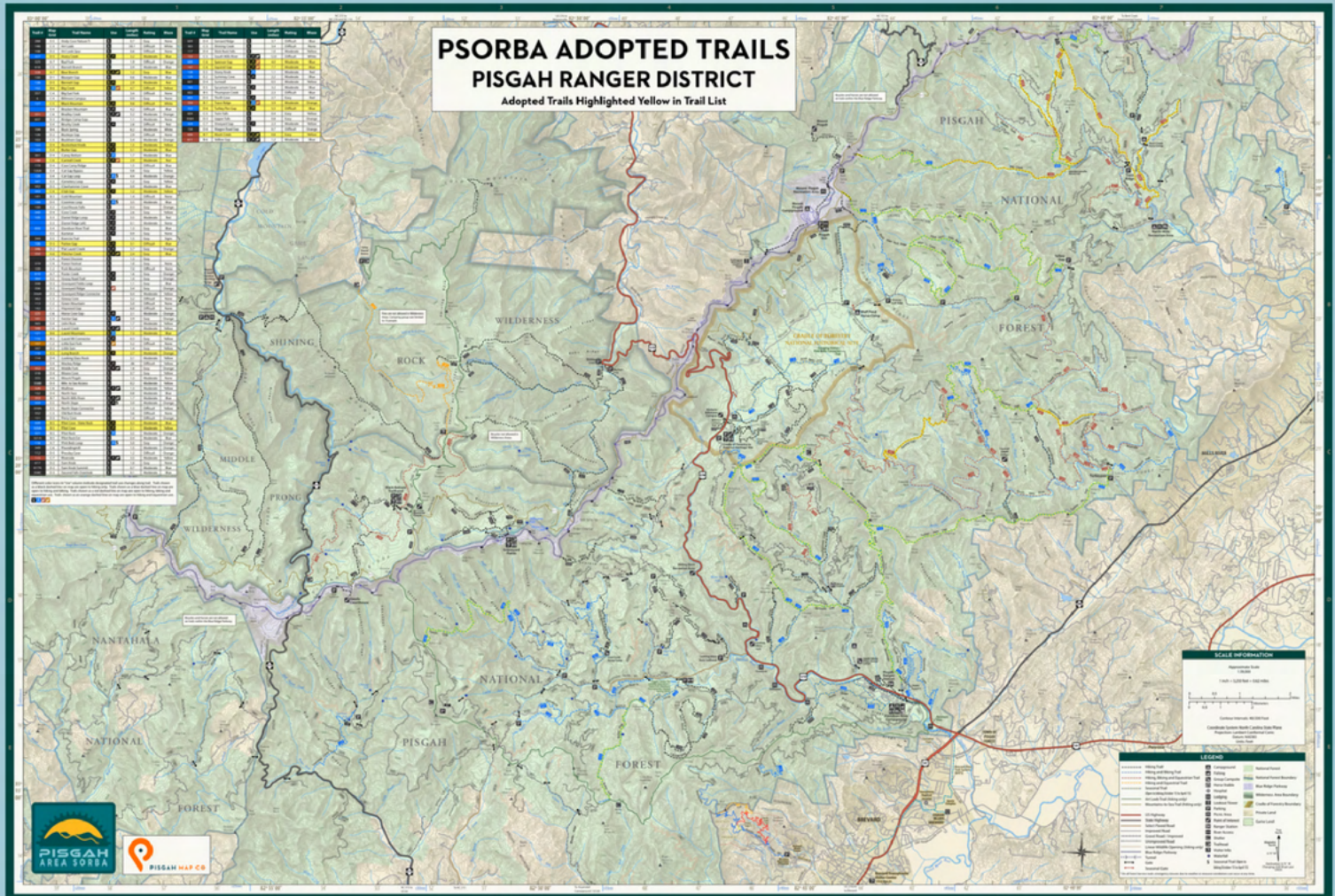
-CREATED (5) **DISTINCT COMMITTEES** TO FOCUS ON OUR MISSION: TRAILS, GOVERNANCE, FUNDRAISING, EVENTS & COMMUNICATIONS.

-SUPPORTED **TRAIL ADOPTION** W/ 17 ADOPTERS WHILE MAINTAINING OVER **100 MILES** OF PISGAH TRAILS.

-HOSTED OR ATTENDED 33 EVENTS INCLUDING **TAKE A KID MTB DAYS** AND **WOMEN'S MTB DAYS**.



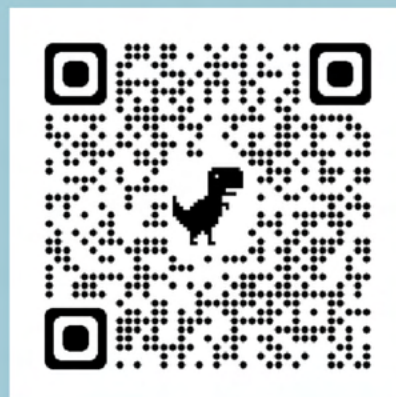
# OUR TRAILS



## PISGAH RANGER DISTRICT

VISIT [PISGAHAREASORBA.ORG/PAS-ADOPTED-TRAILS/](https://PISGAHAREASORBA.ORG/PAS-ADOPTED-TRAILS/)

OR SCAN THE QR CODE TO VIEW MAP IMAGES.

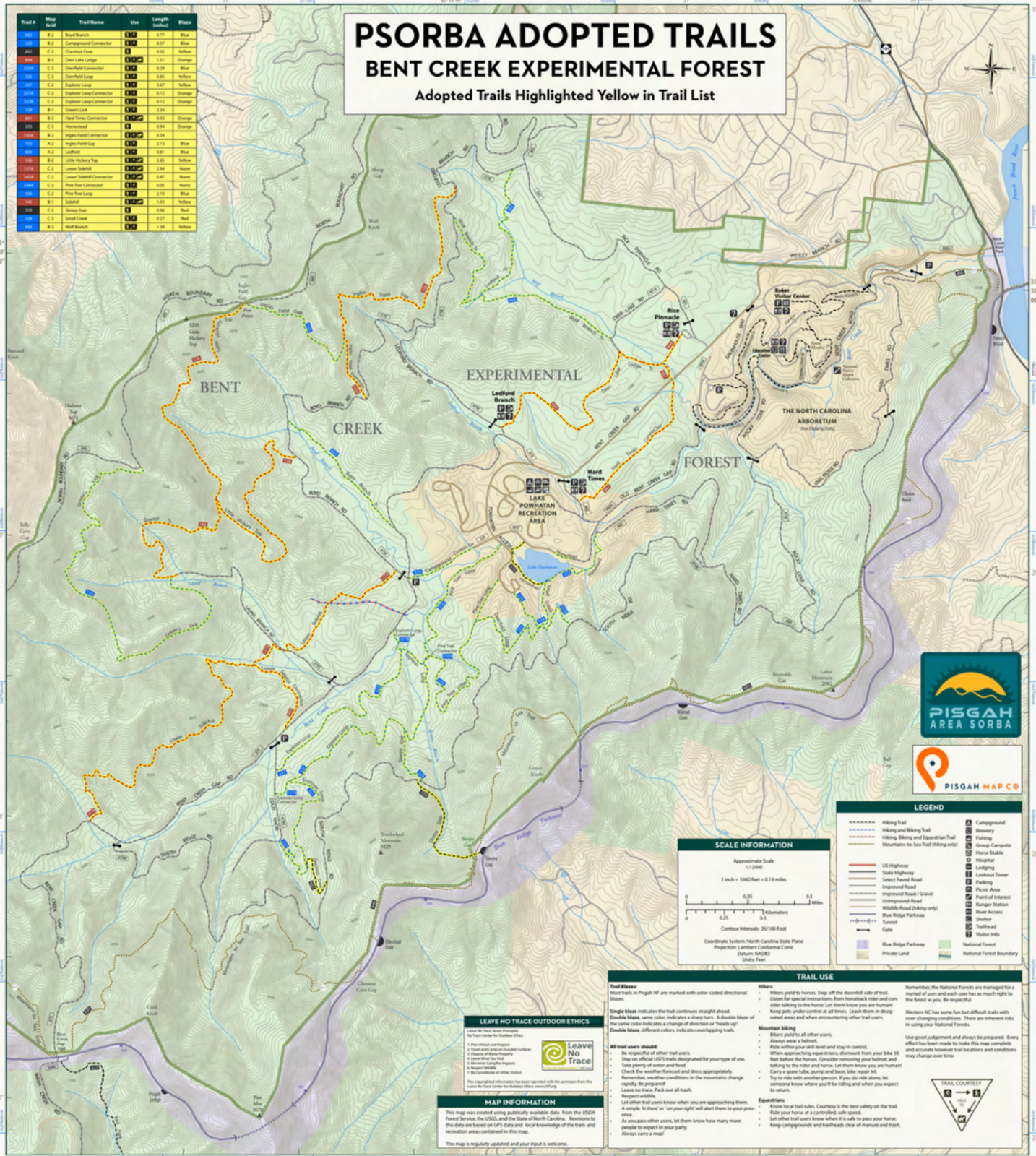


# OUR TRAILS

## PSORBA ADOPTED TRAILS BENT CREEK EXPERIMENTAL FOREST

Adopted Trails Highlighted Yellow in Trail List

Trail #	Map Grid	Trail Name	Use	Length (miles)	Color
1001	B-2	Bent Branch	OH	0.27	Blue
1002	B-2	Campanell Connector	OH	0.17	Blue
1003	C-2	Chestnut Cove	OH	0.52	Yellow
1004	B-3	Clear Lake Lodge	OH	1.11	Orange
1005	C-3	Overfield Connector	OH	0.20	Blue
1006	C-3	Overfield Loop	OH	0.65	Yellow
1007	C-3	Explosion Loop	OH	0.67	Yellow
1008	C-2	Explosion Loop Connector	OH	0.12	Orange
1009	C-2	Explosion Loop Connector	OH	0.12	Orange
1010	B-1	GreenLink	OH	2.34	Blue
1011	B-2	Head Three Connector	OH	0.55	Orange
1012	C-3	Ironwood	OH	0.94	Orange
1013	B-2	Lehigh Field Connector	OH	0.34	Orange
1014	A-2	Lehigh Field Gap	OH	0.13	Blue
1015	A-2	Lehigh	OH	0.41	Blue
1016	B-2	Lake Victoria Top	OH	1.00	Yellow
1017	C-2	Lower Sublett	OH	1.34	None
1018	C-2	Lower Sublett Connector	OH	0.47	None
1019	C-2	Flow Tree Connector	OH	0.26	None
1020	C-2	Flow Tree Loop	OH	1.15	Blue
1021	B-1	Sublett	OH	1.03	Yellow
1022	C-2	Upper Gap	OH	0.26	Red
1023	C-2	Small Loop	OH	0.27	Red
1024	B-2	Small Branch	OH	1.39	Yellow



### SCALE INFORMATION

Approximate Scale  
1:12,000

1 inch = 1000 feet = 0.19 miles

Contour Interval: 20/100 Feet

Coordinate System: North Carolina State Plane  
Projection: Lambert Conformal Conic  
Datum: NAD83  
Units: Feet

### LEGEND

	Hiking Trail		Campground
	Hiking and Biking Trail		Beverly
	Hiking, Biking and Equestrian Trail		Fishing
	Mountains-to-Sea Trail (biking only)		Group Campsite
	US Highway		Innery State
	State Highway		Hospital
	Select Forest Road		Lodging
	Improved Road		Scout Tower
	Unimproved Road / Gravel		Parking
	Wildlife Road (biking only)		Picnic Area
	Blue Ridge Parkway		Point of Interest
	Tunnel		Ranger Station
	Cable		Tour Access
	Blue Ridge Parkway		Shuttle
	Private Land		Trailhead
	National Forest Boundary		Visitor Info

### LEAVE NO TRACE OUTDOOR ETHICS

Leave No Trace Seven Principles:

1. Plan ahead and prepare
2. Travel and camp on durable surfaces
3. Dispose of waste properly
4. Leave what you find
5. Respect wildlife
6. Respect other visitors
7. Be considerate of other visitors

This copyrighted information has been reprinted with the permission from the Leave No Trace Center for Outdoor Ethics.

### MAP INFORMATION

This map was created using publicly available data from the USGS Forest Service, the USGS, and the State of North Carolina. Responses to this data are based on GPS data and local knowledge of the trails and recreation areas contained in this map.

This map is regularly updated and your input is welcome.

### TRAIL USE

**Trail Blazes:** Most trails in Pisgah NP are marked with color-coded directional blazes.

- Single Blaze indicates the trail continues straight ahead.
- Double Blaze, same color, indicates a sharp turn. A double blaze of the same color indicates a change of direction or "back up".
- Double Blaze, different colors, indicates overlapping trails.

**All trail users should:**

- Be respectful of other trail users.
- Stay on official GPS trails designated for your type of use.
- Take plenty of water and food.
- Check the weather forecast and dress appropriately.
- Remember, weather conditions in the mountains change rapidly, be prepared!
- Leave no trace. Pack out all trash.
- Respect wildlife.
- Let other trail users know when you are approaching them.
- Be simple to follow or "go your right" will alert them to your gear.
- As you pass other users, let them know how many more people are expected in your party.
- Always carry a map!

**Hikers:**

- Always point to blazes. Step off the downhill side of trail.
- Listen for special instructions from horseback riders and equestrian riders. Let them know you are hiker!
- Keep pets under control at all times. Leash them in designated areas and when encountering other trail users.

**Horseback Riding:**

- Blazes point to all other users.
- Always wear a helmet.
- Ride within your skill level and day in control.
- When approaching equestrians, dismount from your bike 50 feet before the horses. Consider removing your helmet and talking to the rider and horse. Let them know you are hiker!
- Carry a spare tube, pump and basic bike repair kit.
- Try to ride with another person. If you do ride alone, let someone know where you're riding and when you expect to return.

**Equestrians:**

- Know local trail rules. Courtesy is the best safety on the trail.
- Ride your horse at a controlled, safe speed.
- Let other trail users know where it is safe to pass your horse.
- Keep campgrounds and trailheads clear of manure and trash.

**Remember, the National Forests are managed for a myriad of uses and each user has as much right to the forest as you, be respectful!**

Western NC has some fun but difficult trails with ever changing conditions. There are inherent risks in using your National Forests.

Use good judgement and always be prepared. Every effort has been made to make this map complete and accurate however trail conditions and conditions may change over time.

# BENT CREEK EXPERIMENTAL FOREST





# AREA HIGHLIGHT

## **RICHMOND HILL PARK**

is the only area maintained by PAS which is not located within the Pisgah Ranger District. Managed by the City of Asheville, this park is home to almost 5 miles of entry level singletrack as well as a free mountain bike skills park. The skills park, constructed in 2020, was completed through a partnership of PAS and the City of Asheville. The area boasts multiple challenge and feature options designed to help riders progress in a safe way. For the last two years, Richmond Hill Park has served as the home for Take A Kid Mountain Biking Day, an annual event PAS organizes every year in partnership with the International Mountain Biking Association (IMBA). It also serves as an area often used by youth mountain biking programs.



# ADVOCACY

Pisgah Area SORBA is an advocate for outdoor recreation. We work with land managers to ensure trails remain accessible to mountain bikers and other forest users. Our work in this area often extends beyond the forest. We also work closely with local leaders and government organizations to ensure that mountain biking and outdoor recreation remains top of mind and a part of their budget strategy. The work we do requires us to have good relationships with land managers, local government, and the folks who use the trails in and around the Pisgah Ranger District. In addition to the work we do locally, our parent organization SORBA, along with support from IMBA, ensures we have a seat at the table during regional planning sessions along as well as at the national legislative level. This is all critical to ensure we keep our trails open and expand access when appropriate.

Pisgah Area SORBA supports a variety of educational initiatives and events. Pictured here are volunteers who, along with Smokey, talked to visitors about our mission and the importance of sustainability at the DuPont Forest Fest.



# EDUCATION

Pisgah Area SORBA is a leading resource for information related to trails and trail related practices. We strive to ensure that folks who head out to enjoy the forest are aware of potential hazards as well as Leave No Trace principles. As a member of the Leave No Trace organization, we practice what we preach. Pisgah Area SORBA regularly works to clean up trash left in and around our forests. We also do our best to explain best practices in trail construction and maintenance through our regular communications with the public, trainings for our trail crew, and public information meetings. The more people we can teach about these practices, the more work we can accomplish together. In the last year, we have worked with a number of groups to teach these principles including the Club de Exploradores, several local colleges/universities, the Boy Scouts, and more.

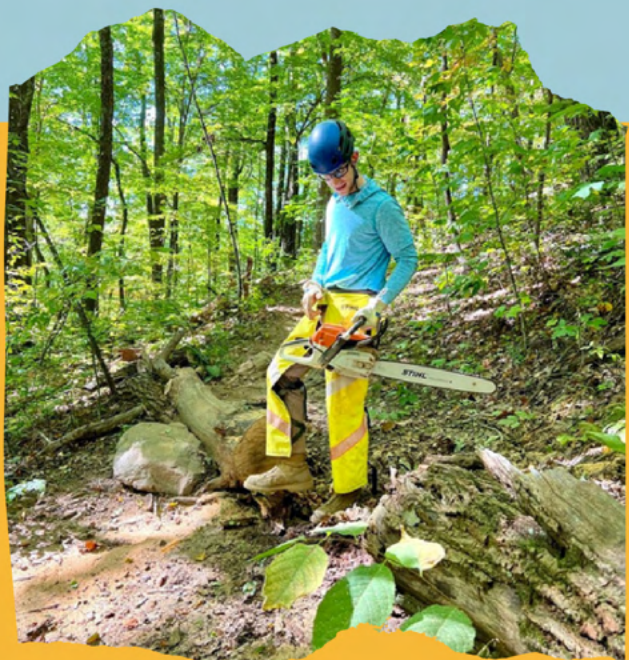
Pisgah Area SORBA works with community groups and educational institutions to offer opportunities for youth to get involved and build the next generation of trail stewards. Pictured here are members of the Club de Exploradores. This is a free, bi-lingual outreach program that recruits

middle school aged students from the Hispanic communities of Transylvania County and surrounding areas to join FIND Outdoors team members on monthly, all-day adventures in Pisgah National Forest. Funded by Dogwood Health, this project was born out of the need to address the imbalance of who is enjoying and benefiting from living next to public lands, like the Pisgah National Forest.



# STEWARDSHIP

Stewardship is at the heart of Pisgah Area SORBA's mission. Ensuring our trails are sustainable means we ensure that access to those trails is sustained as well. We accomplish this goal with a network of volunteers who serve in a variety of roles. Our Trail Crew Coordinator works closely with our land managers and our Area Trail Coordinators to ensure all the resources are in place for certified Trail Crew Leaders to tackle the work which is most needed in our forest. Our Trail Crew Leaders head out into the forest with a team of fellow volunteers and take care of the important trail maintenance and upkeep needed to shed water properly. That's our biggest goal in maintaining our trails here in the Pisgah Ranger District. We get a lot of rain in Western North Carolina, and as of recently it's not uncommon to see multiple tropical storms hit the area each year. The amount of rainfall we receive, coupled with the increasing popularity of our world class trails, means that trails need to be hardened, drains need to be cleared, and grade reversals need to be constructed. Those are some of the techniques that are used to ensure dirt stays in the trail bed and out of our waterways. To learn more about the work we do, sign up to volunteer for a public workday!



# PARTNERSHIPS

We could not complete the work we do without support from our amazing community, which includes industry partners, fellow nonprofit organizations, and municipalities with whom we regularly collaborate. Some of the other non-profit organizations we work with who are also doing great work in the Pisgah Ranger District include FIND Outdoors, The Pisgah Conservancy, The Backcountry Horsemen of Pisgah, and the Pisgah Cowboys. Of course, it goes without saying that our land managers play a vital role in supporting our work. These include the US Forest Service and the City of Asheville. We also have great partnerships with Explore Brevard and the Henderson County Tourism and Development Association. In addition to those amazing partners, we gain support from a number of industry partners. Many of them contribute countless number of hours volunteering on the trail in addition to supporting Pisgah Area SORBA financially.



Pisgah Area SORBA regularly shares its tool trailers full of a variety of hand tools and PPE with the G5 Collective, based in Old Fort.

Pictured here is Pisgah Area SORBA Trail Crew Leader, Jon Lane (who also serves as a trail specialist with the G5 Collective), getting ready to lead a work day for the G5 Collective.

# PARTNERSHIPS

A perfect example of partnership that we are excited to announce is a new trail counter program which we anticipate implementing in Transylvania County next year. With the blessing of the US Forest Service, we plan to install 3 trail counters at strategic locations within Pisgah Forest. Thus far, financial support for this project is provided by Pisgah Area SORBA, The Pisgah Conservancy, FIND Outdoors, and the Backcountry Horseman of Pisgah. Data collected from these counters will quantify the use of our trail systems and therefore help inform future decisions in maintenance and development. This data will also support grant applications, which are critical to ensuring our ability to tackle some of Pisgah's biggest needs. We are proud to lead this valuable and collaborative project.



Pictured here are (left to right) Jared Hartman from Pisgah Area SORBA, Craig Ruhland from Pisgah Area SORBA, Jeff Maitz from the Pisgah Conservancy, Ed Sutton from Trail Dynamics, Chris Worley from the US Forest Service, and Tyler Donaldson from Pisgah Area SORBA. This picture was taken during a project that was completed in Bent Creek Experimental Forest that involved rehabilitating a major section of trail that was prone to degradation from water damage.

# INDUSTRY & COMMUNITY SUPPORTERS

## Titanium (\$5,000+)

Athletic Brewing

Cognitive MTB

Explore Brevard

FIND Outdoors

Fox Factory Trail Trust

Industry Nine

Sierra Nevada

Sycamore Cycles



# INDUSTRY & COMMUNITY SUPPORTERS

## Carbon (\$3,000+)

Henderson County

New Belgium

The Hub

Trek

WTB



**TREK**



**WTB**





## **INDUSTRY & COMMUNITY SUPPORTERS**

# **Aluminum (\$1,500+)**

**Asheville Pizza and Brewing**

**Bhramari Brewing**

**Hedrick Industries**

**JAG Construction**

**LuvTrails**

**Oskar Blues**

**Pisgah Coffee Roasters**

**Pisgah Map Co.**

**Sarver Realty Group**

**Second Gear**

**WNC Property Solutions**

# **INDUSTRY & COMMUNITY SUPPORTERS**

## **Steel (\$500+)**

**Berm Peak**

**Cane Creek Cycling Components**

**Crank Coffee**

**Derek DiLuzio Photography**

**Equinox Environmental**

**Gaia GPS**

**Kitzuma Cycling Logistics**

**Luxe Linear Drains**

**Nature Trails, LLC**

**Pisgah Podcast**

**Pisgah Rage**

**Riveter**

# GET INVOLVED

There are many ways to get involved with Pisgah Area SORBA and support our mission.

Here are some options for you to consider in 2023

[SIGN UP TO VOLUNTEER FOR TRAIL WORK](#)

[SIGN UP TO JOIN A COMMITTEE](#)



Attend a quarterly update meeting  
(dates coming soon!)

[Sign up for our newsletter](#) for information  
about meetings, events, and more..

[www.pisgahareasorba.org](http://www.pisgahareasorba.org)

P.O Box 61  
Skyland, NC 28776



[facebook.com/pisgahareasorba](https://facebook.com/pisgahareasorba)



[instagram.com/pisgahareasorba](https://instagram.com/pisgahareasorba)

