

ASPEN | COMMUNITY NEWSLETTER

MARCH 22, 2024 | VOLUME V



Aspen's Community Garden

JESSICA PITTMAN, *COMMUNITY SCHOOLS COORDINATOR*

Adventures happen when we show up for them.

Our planet calls us off of the screens, out of the classroom, and into the wild!

Our first Aspen Community Garden meeting happened on March 12th! We shared our vision for students to dig in dirt, learning science and math and community development. Community members shared and drew out their ideas. Neighbors in apartments will soon have space to grow their own food.



Newsletter Highlights

ASPENS COMMUNITY GARDEN

ASPEN COMMUNITY GARDEN WISHLIST

ASPEN ART

FOSTER, HOMELESS CONNECTION OFFICE



ASPEN'S COMMUNITY GARDEN

MARCH 22, 2024 | VOLUME V

All around us, every day, tiny miracles happen. A microscopic seed tossed out into soil takes root and grows.



Our meeting ended this way at the garden- planting seeds as a symbol of our vision for beauty, new life and growth to happen in the Meadow neighborhood. A garden is far more than a place to grow food. It has the power to draw us together as we work to transform our community in a visible, tangible way.

We are thrilled to have a new Garden Coordinator at Aspen, Jesse Martindale! He has years of experience building gardens and teaching all around the United States and in Fresno.



“Modern humans are disconnected from how our food is grown and how our things are made. Community gardening, whether at a school or in the neighborhood, is a way to reconnect. The Aspen Community Garden will be a space for community gardeners and students to co-create and design not just garden beds and plant guilds, but cultural events, art, and more!” -

Jesse Martindale

JOIN US IN THIS COMMUNITY SCHOOL PROJECT!

Volunteer: Simply show up on Wednesdays now through the end of the school year from 3-6 pm at the Garden (1415 e Saginaw Way)

THE ASPEN COMMUNITY GARDEN DONATION WISHLIST:

Have any extra tools, pots, or plants?
If so, you can donate them to help with the new garden. All donations are tax deductible.

WE ARE CURRENTLY IN NEED OF:

TOOLS:

2 - 3 SPADE SHOVELS
1 - 2 METAL WHEEL BARRELS
5 GALLON BUCKETS
OTHER GARDEN HAND TOOLS
(SUCH AS HOES, RAKES, ETC.)



PLANTS / SEEDS:

ANY PERENNIAL PLANTS SUCH AS FRUIT
TREES AND HERBS.

PLASTIC POTS FOR SEEDING.



INFRASTRUCTURE THINGS:

• 2 BY 6 LUMBER FOR GARDEN PLOT EDGES.
DRIP LINE AND CONNECTORS.



Donations can be dropped off Wednesdays from 1:00 pm to 6:00 pm: 1400 E Saginaw Way

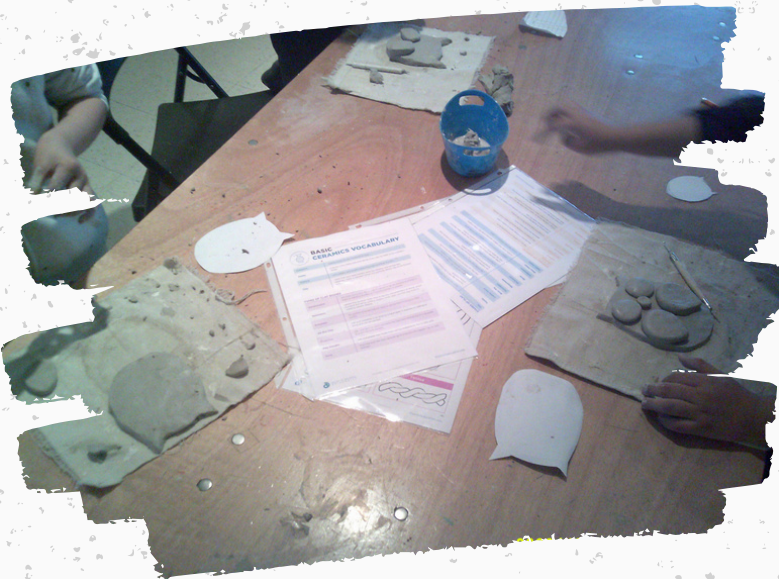
If you have any other garden related things you think might help please message us! Contact Jesse at jesse.martindale@aspenps.org



ASPEN MEADOW ART

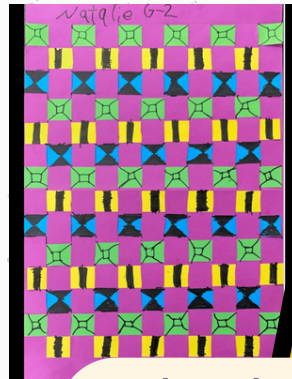
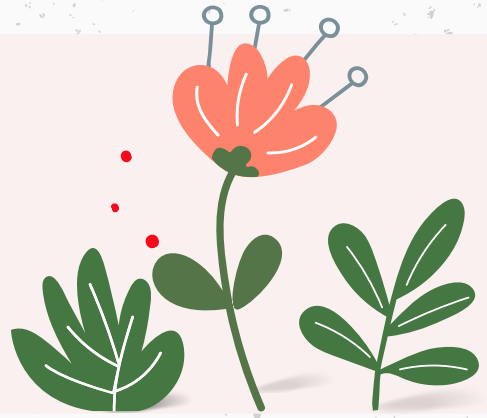


Aspen Meadow's Visual Art instructor, Paige Mason, fires up the new kiln!





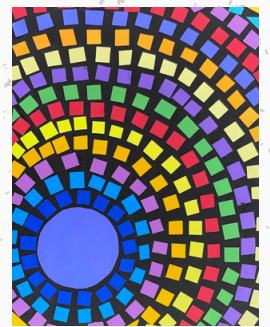
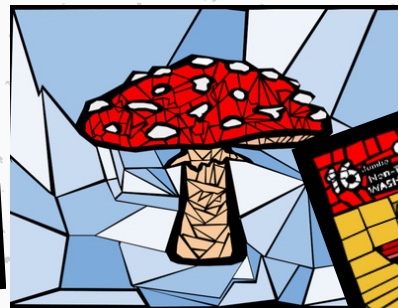
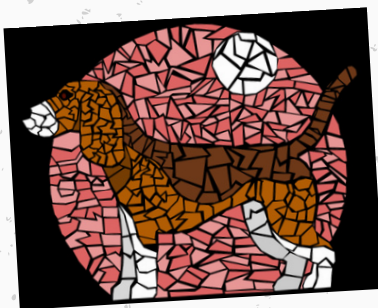
ASPEN VALLEY ART



2nd Grade worked on a paper Kente cloth inspired by Ghana clothing!

Kinder & 1st worked on a BHM collage! They all learned about the importance black history and what people did for our country!

3rd & 4th created a paper mosaic inspired by the wonderful Alma Thomas who was an African American Artist!



5th & 6th grade created a digital mosaic on their computers!

RAVEN'S ART



WEAVING ART



CERAMIC 1
BOXES WITH LIDS



ART 1
SUCCULENT CHALK
PASTELS



Nancy Alvarez
Resource Counselor
McKinney Vento



Lidia Marquez
Resource Counselor Assistant
McKinney Vento

Family Resource Office

We love, care and listen to our students and families as they transition from crisis into community.



Our Aspen Community continues to support our students with valuable and unforgettable moments.



Our staff and community partners are trained under McKinney Vento to identify any student in transition.



A word of encouragement and resources to our Aspen Vulnerable Community brings families together.



Partnering with our Community

If you are interested in donating to our students we are accepting gift cards and toiletries, please contact our Family Resource Office to schedule a drop off.

