

2023

STATUS OF HUNGER IN SNOHOMISH COUNTY

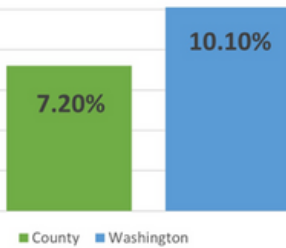


The data on this fact sheet reflect 2021-2023 figures.

TOTAL COUNTY POPULATION:
840,079

GENERAL HUNGER STATISTICS

People Food Insecure



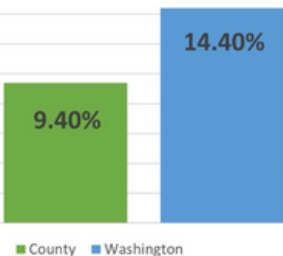
43%

people reporting food insecurity who likely do not qualify for federal nutrition assistance, county

46%

people reporting food insecurity who likely do not qualify for federal nutrition assistance, statewide

Children Food Insecure



43%

children in food insecure households who likely do not qualify for federal nutrition assistance, county

38%

children in food insecure households who likely do not qualify for federal nutrition assistance, statewide

SUPPLEMENTAL NUTRITION ASSISTANCE PROGRAM

74,540

average monthly SNAP participants, county

72,601

estimated income eligible people not participating in SNAP, county

\$18,008,282

current annual value of SNAP participation, county

912,265

average monthly SNAP participants, statewide

804,052

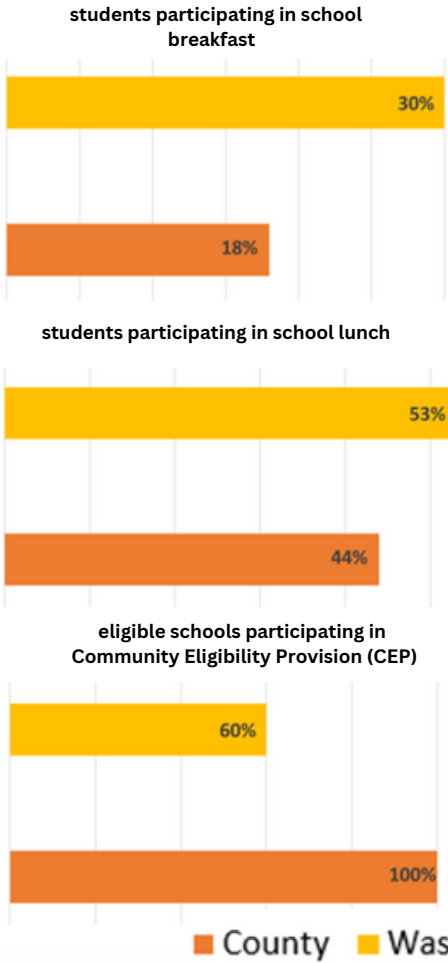
estimated income eligible people not participating in SNAP, statewide

\$217,184,223

current annual value of SNAP participation, statewide

SCHOOL MEALS - SNOHOMISH COUNTY

112,649
Total K-12 Student Enrollment



38%
students with Free and Reduced Price meal eligibility, county

57%
students with Free and Reduced Price meal eligibility, statewide

5%
schools required to serve Breakfast After the Bell beginning SY23-24, county

27%
schools required to serve Breakfast After the Bell beginning SY23-24, statewide

SUMMER MEALS

6,572
average daily meals participation, county

119,780
average daily meals participation, statewide

WOMEN, INFANTS, AND CHILDREN

13,687
total number of WIC participants, county

195,655
total number of WIC participants, statewide

Data Sources

DSHS. (2022). ESA Briefing Book. Washington State Department of Social and Health Services.
https://www.dshs.wa.gov/sites/default/files/ESA/briefing-manual/2022Basic_Food_Assistance.pdf

Feeding America. (2021). Hunger & poverty in Washington. Map the Meal Gap.
<https://map.feedingamerica.org/county/2021/overall/washington>

Washington Office of Superintendent of Public Instruction . (2023). Child nutrition program reports. OSPI.
<https://ospi.k12.wa.us/policy-funding/child-nutrition/child-nutrition-program-reports>