



Farallon Smart Buoy™ System

The Farallon Smart Buoy™ system allows fishermen to monitor the location and movement of their deployed fixed-gear — anytime, anywhere.

DEPLOYMENTS

Our Smart Buoys have been successfully deployed in North America's largest and most demanding fixed gear fisheries, from Alaskan king crab to New Brunswick snow crab to pelagic longline.



EFFICIENT OPERATIONS

Drive directly to set gear, saving hours of work and gallons of fuel per run.



PRECISE POSITION

Navigate to **precise coordinates** vs. waypoint approximations, even if weather, wind, or waves move the gear.



REMOTE MONITORING

Track buoy movement anytime in all conditions. Receive event notifications via customizable alerts. Optional sharing of data with other vessels to avoid gear conflict.



UNIVERSAL SYSTEM

Compatible with most fixed-gear types and configurations including: pots/traps, longlines, FADs, aquaculture, and ropeless gear.



NO TRAINING REQUIRED

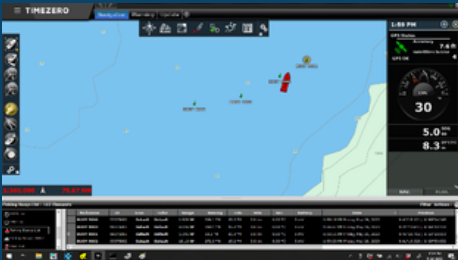
Buoys turn on automatically when they are deployed.

Farallon Smart Buoy

Our compact, rugged, sensor-packed buoys can handle the most demanding ocean conditions, collecting and transmitting updated position and motion data via Iridium satellite even when miles from shore. Depth-rated to 220m.

Multiple interfaces

Integrate with **Timezero, Olex, Garmin, Furuno** and other chart plotters. Follow up-to-date buoy coordinates and customize alerts if your gear moves, resurfaces or exits water. **Buoy Locator mobile app** provides essential data to find your buoys, while the **BlueVue web interface** provides historical data: location, movement and analytics.



Blue Ocean Gear videos:



HARDWARE

Form Factor **Housing Material:** Hard Shell Plastic (PVC)
Diameter: 7 inches (18 cm) **Weight:** 3lbs (1.4kg)
Buoyancy: 6 lbs. (est).
Depth Rating: 400m (220 fa.)
Connections: Dual eyes compatible with harness of 5/16" line or smaller

Sensor Suite GPS (Latitude/longitude)
Depth
Surface Temperature
Velocity
Acceleration
Saltwater immersion (no on/off switch)

Transmission Iridium satellite
Long-range open-band radio (buoy-to-buoy and buoy-to vessel via receiver)
Customizable data update rate with remote ability to change modes

Power NiMH battery pack, wirelessly rechargeable
Battery life up 6 months between charges based on transmission rate

Certifications FCC certified and authorized for use in USA, CAN, UK, EU and ANZ. Call us for your country approval.

SOFTWARE

BuoyLocator™ iOS mobile application – provides location, status and alerts
Customizable SMS alerts

BlueVue™ Web-based interface and dashboard providing current network details as well as historical analysis of sensor data. **Chart plotter integration available.**