



YAMATJI SOUTHERN REGIONAL
CORPORATION

INVESTMENT PROSPECTUS

YSRC OVERVIEW

Yamatji Nation

The Yamatji Nation are the Traditional Owners for the Agreement area, comprising Hutt River, Mullewa Wadjari, Southern Yamatji and Widi Mob Native Title claim groups. The Yamatji Nation is made up of different identity groups and people may identify as Amangu, Badimia, Hutt River, Mullewa Wadjari, Naaguja, Nhanda, Nhanaghardi, Wajarri, Wattandee, Widi Mob and Wilunyu.

Yamatji Nation Indigenous Land Use Agreement

The Yamatji Nation Indigenous Land Use Agreement, covering more than 48,000 square kilometres of land in Western Australia's Mid West, was signed on 24 February 2020. The Agreement provides the people of the Yamatji Nation, via the YSRC and its group of related entities, with an economic package of benefits that compensates them for acts that have impaired or extinguished their Native Title.

Yamatji Southern Regional Corporation

The Yamatji Southern Regional Corporation Ltd (YSRC) was established in January 2020, as part of the historic Yamatji Nation Agreement with the Western Australian Government. The YSRC is the parent entity of the Yamatji Nation governance structure. The purpose of the YSRC and its entities is to deliver social, economic, and cultural benefits, prosperity and well-being for the Yamatji Nation and future generations, through the Yamatji Nation Indigenous Land Use Agreement.

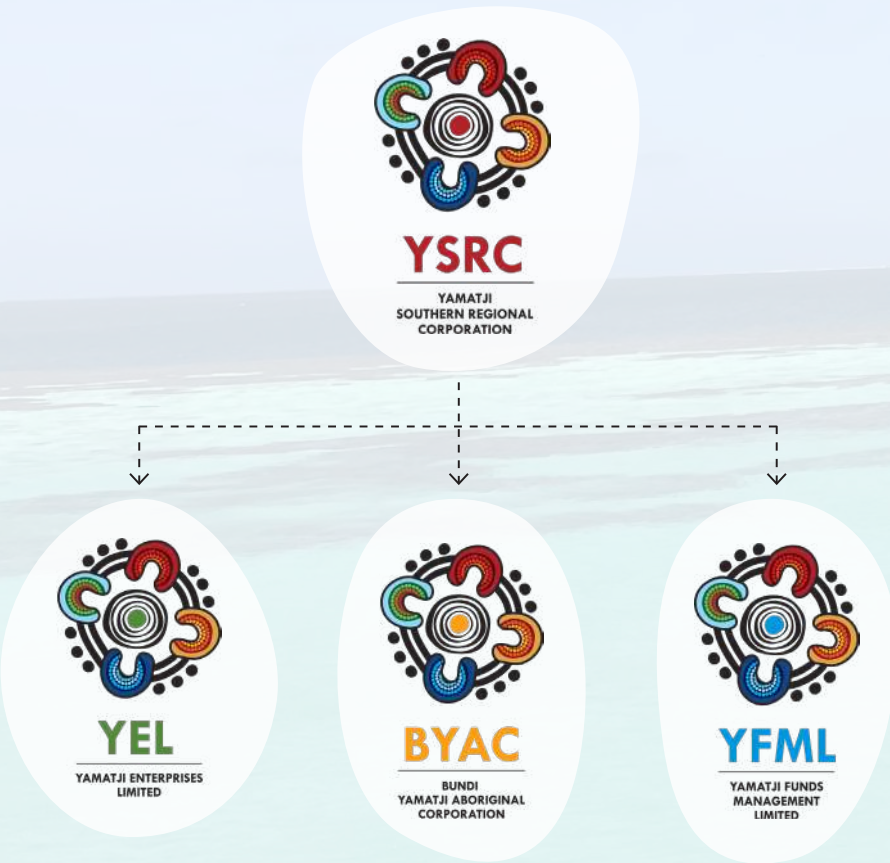


Image: The Abrolhos Islands, YSRC

Yamatji Southern Regional Corporation (YSRC) is the Regional Entity and is responsible for fulfilling the contractual obligations under the ILUA and setting the strategic direction, on behalf of the Yamatji Nation Community. YSRC is governed by the Corporations Act and is the head company of the YSRC Group.

Yamatji Enterprises Limited (YEL) is the economic arm for the Group. Its role is to create and invest in economic opportunities and to build on the funds that are received from the ILUA. It is an ASIC led company.

Bundi Yamatji Aboriginal Corporation (BYAC) is the registered Native Title Body Corporate (RNTBC) and is responsible for decisions relating to the Native Title land parcels, and will hold the management orders for the conservation estate and Yamatji Land Estate Reserves. It is a ORIC based company.

Yamatji Funds Management Limited (YFML) is the Yamatji Trustee that with the Licensed trustee (Mutual Trust) form the Joint Trustee whose role is to provide oversight, manage the trust where the cash and non-cash benefits are placed, and approve distribution of funds to YSRC and its subsidiaries.

MESSAGES FROM OUR CEO AND YEL CHAIR

Luka Gray
CEO of YSRC



Luka Gray, a proud Yamatji Woman, is the CEO of Yamatji Southern Regional Corporation. She has extensive experience working within Aboriginal organisations and has dedicated her own time to supporting community initiatives. Luka's career is marked by her unwavering commitment to community service, governance, and policy development, making her a valuable asset to YSRC.

"I am excited to share with you our investment prospectus. Showcasing the diversity of investment opportunities spanning across our Lands, Rangers, Heritage and Business Support teams, as well as insights on how Yamatji Enterprises Ltd (YEL) is contributing to Economic Development."

"For us, partnerships hold great significance, as they contribute to the preservation of Yamatji culture and the prosperity of Yamatji people. Your investment in YSRC will contribute to realising our vision of a sustainable Yamatji Nation and a transformative regional economy that empowers our people, promotes and protects our cultural heritage, and enhances our well-being."

Jarrad Oakley Nicholls
Yamatji Economic Expert Director & YEL Chair



Jarrad Oakley Nicholls, a proud Yamatji Man, draws on his decade of experience in Aboriginal employment services and business development in his roles as the Yamatji Economic Expert Director, and YEL Chair. Jarrad's leadership is defined by a steadfast commitment not only to business success but also to uplifting the communities he serves and fostering positive change.

"Yamatji Enterprises Ltd (YEL) is the economic arm of YSRC, our goal is to create a robust portfolio that not only delivers financial returns but also enhances the well-being of our community."

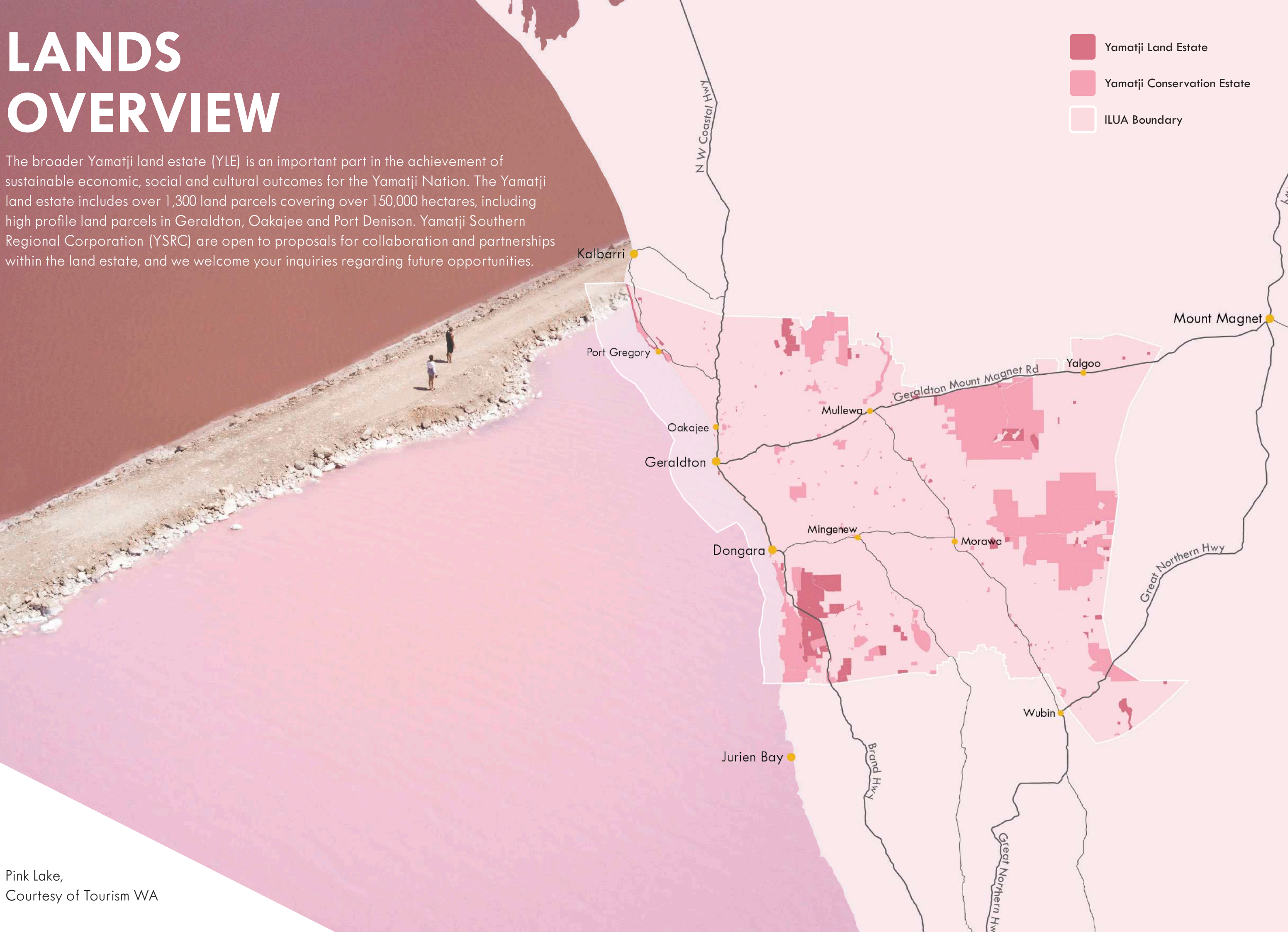
"We are seeking partners in our mission to build a sustainable future for our people and Country. I encourage you to discover the diverse range opportunities YSRC and it's entities have to offer. Investments play a crucial role in empowering us to expand our reach and impact within the community."

"Join our journey, as we foster economic prosperity for the Yamatji Nation for generations to come."

Image: Geraldton Coast, Courtesy of Tourism WA

LANDS OVERVIEW

The broader Yamatji land estate (YLE) is an important part in the achievement of sustainable economic, social and cultural outcomes for the Yamatji Nation. The Yamatji land estate includes over 1,300 land parcels covering over 150,000 hectares, including high profile land parcels in Geraldton, Oakajee and Port Denison. Yamatji Southern Regional Corporation (YSRC) are open to proposals for collaboration and partnerships within the land estate, and we welcome your inquiries regarding future opportunities.

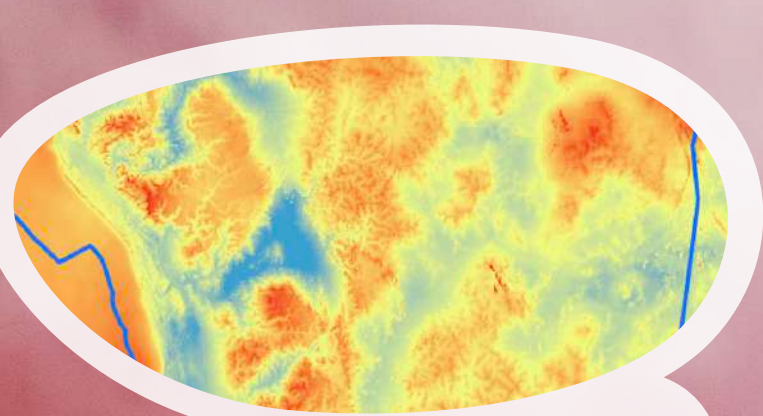


Pink Lake,
Courtesy of Tourism WA

LANDS OPPORTUNITIES

Access Agreements

YSRC's Lands team is committed to ensuring that all land access agreement proposals conserve & enhance the land estate for future generations. YSRC welcomes discussions regarding land access agreements for proposals that intersect the Yamatji land estate.



GIS Mapping

Conservation & Research

Conservation & restoration of the Yamatji land estate (YLE) not only provides the opportunity to enhance the environmental qualities of the YLE, it also offers opportunities for collaboration on research or carbon credit projects.



Renewable Energy

The mid west region is known for its renewable energy potential. The Yamatji land estate and broader ILUA area provide a number of opportunities for collaboration in establishing renewable projects.

Tourism

The land estate includes iconic tourism destinations such as Pink Lake & Lucky Bay. YSRC welcomes inquiries regarding tourism developments on Yamatji lands and/or potential partnerships.



Development

Commercial and industrial development opportunities include beach front lot number 601; Bluff Point; Narngulu; and the Oakajee industrial development.



Pink Lake,
Courtesy of Tourism WA

LAND RANGERS OVERVIEW

The Yamatji Nation Land Ranger Program is a partnership between YSRC and the Department of Biodiversity, Conservation and Attractions (DBCA). The program is an Aboriginal-led environmental and cultural conservation initiative operating in Western Australia, within the jurisdiction of the Yamatji Nation Indigenous Land User Agreement (ILUA).



Natural Resource Monitoring & Research

Conducting fauna and flora surveys, monitoring climate, and gathering data to inform conservation strategies and track environmental changes.



Land & Environmental Management

Conducting controlled burns, managing weeds and pests, restoring habitats, and monitoring water quality to protect and enhance natural ecosystems.

Traditional Land Use Planning & Management

Collaborating with Aboriginal communities to develop & implement traditional land use plans that integrate Aboriginal knowledge with modern land management practices.



Emergency Response & Disaster Management

Providing emergency response services during natural disasters such as bush-fires, floods, and cyclones. Aboriginal rangers may assist in firefighting efforts, search and rescue operations, evacuation support, and community recovery efforts following emergencies.

LAND RANGERS OPPORTUNITIES

The Yamatji Land Rangers program focuses on land management, biodiversity conservation, cultural preservation, and sustainable development. The program engages local Yamatji people, providing them with employment and training opportunities while simultaneously safeguarding their traditional lands and cultural heritage.

Cultural Heritage Protection

Surveying and managing cultural sites, educating the community about cultural significance, and implementing measures to safeguard Aboriginal heritage.



Data Collection

Establishing systems for collecting, managing, and sharing data on environmental indicators, cultural heritage sites, and ranger activities. This includes, drone data collection, developing databases, GIS mapping tools, and on-line platforms for storing and disseminating information.



Eco & Cultural Tourism

Developing and leading ecotourism initiatives that provide visitors with opportunities to experience Aboriginal culture, traditional land management practices, and unique natural attractions.

SEA RANGERS OVERVIEW

The Yamatji Nation Sea Ranger Program is a partnership between Bundi Yamatji Aboriginal Corporation (BYAC), Batavia Coast Maritime Institute (BCMI), Central Regional TAFE, The University of Western Australia (UWA), and Parks Australia. The purpose of the program is to care for Yamatji Nation Sea Country, whilst also building an understanding of the bio-cultural values of the Aboꞛhos Marine Park, and be active participants in the management of the Marine Park. The program engages local Yamatji people, providing them with employment and training opportunities while simultaneously safeguarding their traditional lands and cultural heritage.



SEA RANGERS OPPORTUNITIES

The focus of the Yamatji Nation Sea Rangers centres on conserving, protecting and enhancing the natural and cultural values of Yamatji Country Sea Country, including the Aboꞛhos Islands, for the benefit of current and future generations. This includes, monitoring and managing marine ecosystems, protecting marine species and habitats, conducting patrols to prevent illegal fishing and poaching, and collaborating with government agencies to enforce marine conservation regulations.

Invasive Weed
Management



Plant Propagation



Cultural Heritage
Site Management

Re-vegetation &
Erosion Control



Seed Collecting



Western Rock
Lobster Counting

Water & Micro-plastics
Monitoring



BRUV Surveys



Beach Clean Ups

HERITAGE OVERVIEW

Preservation of cultural heritage materials is vital to the Yamatji Nation. The YSRC Heritage team works to ensure that all work undertaken on Yamatji County is conducted sensitively, and in a manner that will not impact the future aspirations of the Yamatji Nation. They work closely with proponents to guide them during the process of establishing relevant agreements, and work closely with Yamatji peoples to support them to conduct Heritage Site Services.

HERITAGE OPPORTUNITIES



Heritage & Project Agreements

Organising mandatory Yamatji Proponent Standard Heritage Survey Agreements (YPSHA), and Yamatji Government Standard Heritage Agreements (YGSHA), as well as best practice Project Agreements, which are tailored to the project, the proponent and their ESG goals.

Cultural Awareness

The YSRC Cultural Awareness Program is being developed as part of nation building. By integrating cultural awareness into our society, we can build a more harmonious and forward-thinking nation.



On Country Training Program

The On Country Training Program prepares and empowers Yamatji peoples for heritage work. This program ensures that Yamatji People have the necessary training and qualifications to conduct on Country work in a safe and sensitive manner whilst remaining compliant to the relevant legislation.



Cultural Services

YSRC partners with proponents to organise events, and supports proponents to organise cultural services such as Welcomes to Country and Smoking Ceremonies.



Heritage Site Services

YSRC's Heritage team works with identified archaeologists to provide due diligence assessments, and ensure relevant projects approvals. The cultural governance system in place ensures the right people are working on the right Country.



Repatriation & Research

The return and consolidation of Yamatji materials, for the benefit of the Yamatji Nation, in an appropriate and accessible way. Collaboration during the process of discovering, assessing, researching, and caring for Yamatji materials and sites is welcomed.



Oral History Recording & Training

YSRC's Heritage team can provide their expertise and equipment to support individuals, families, and/or communities to record their stories to preserve for future generations.

SPONSORSHIP OPPORTUNITIES

Yamatji Southern Regional Corporation (YSRC) offers sponsorship opportunities that enable our investors to support impactful community initiatives, fostering economic empowerment, cultural preservation, and environmental sustainability for the Yamatji people. By sponsoring YSRC, partners can enhance their corporate social responsibility profiles, gain valuable community and stakeholder engagement, and contribute to meaningful, long-term positive change in the region.



Conservation Projects
Invest in environmental initiatives such as the Abrolhos Islands conservation efforts, promoting habitat restoration and sustainable tourism.



Art & Cultural Preservation
Support the creation and maintenance of cultural artifacts, art installations, and community museums to preserve and promote Yamatji culture.



Agricultural Development
Back sustainable agriculture projects that leverage traditional knowledge and modern techniques, promoting food security and creating employment opportunities.



Health & Wellbeing Projects
Fund health initiatives aimed at improving the physical and mental wellbeing of the Yamatji community, including social initiatives, sorry business initiatives and the provision of health services.

SPONSORSHIP OPPORTUNITIES

Yamatji Southern Regional Corporation (YSRC) offers a variety of sponsorship opportunities that enable investors to support impactful community initiatives, some examples of these sponsorship opportunities are outlined on this page.

Educational Programs

Fund resourcing programs, vocational training, & educational initiatives to empower Yamatji youth with the skills & knowledge needed for future success. Current programs include the Certificate II in Workplace Skills, and the Emerging Curator Program.



Community & Cultural Events

Support cultural preservation through events like the First Lights Drone Show, which celebrates Yamatji heritage and attracts tourism.



ECONOMIC DEVELOPMENT OVERVIEW

Yamatji Enterprises Ltd (YEL) was established on 22 April 2021 as part of a dynamic group of entities dedicated to harnessing economic opportunities arising from the ILUA. With a steadfast commitment to cultural preservation and economic empowerment, YEL aims to excel in diverse sectors through strategic partnerships and innovative approaches. By creating meaningful opportunities for the Yamatji people, fostering economic self-reliance, and driving sustainable development, YEL is poised to leave a lasting legacy of prosperity and progress for the community.

ECONOMIC DEVELOPMENT CASE STUDIES

Yamatji Enterprises Limited (YEL) is a pioneering business entity committed to advancing economic development and sustainability within the Yamatji community. YEL is dedicated to fostering growth, creating job opportunities, and promoting the rich cultural heritage of the Yamatji people through strategic investments, the development of economic assets including land and housing, and innovative business practices. YEL has existing Nation Building projects, which include Yamatji Fresh and Yamatji Water.

Yamatji Fresh

Yamatji Fresh is a joint venture between 4 Ways Fresh, Indigenous Business Australia (IBA) & Yamatji Enterprises Limited (YEL). The joint venture is in the process of building and operating the largest cucumber farm in Australia (and the southern hemisphere). Up to 600 greenhouses will be built by the end of the project, aiming to produce over 1,700 Tonnes of cucumbers per annum. The joint venture is exploring the expansion of sustainable water usage and irrigation, as well as progressing works to become self-sufficient by installing solar power for the project.



Yamatji Water

Yamatji Water is a joint venture between The Right Water Company and Yamatji Enterprises Limited (YEL). The joint venture is commercialising a 25 gigalitre water rights allocation provided to YSRC under the ILUA. The sale of this water allocation, and resulting funds, will assist Yamatji Nation to enhance its economic prosperity and self-determination. The joint venture provides an opportunity for local governments, agencies and private industry to develop and run commercial scale water infrastructure including bores, desalination plants and standpipes.



The Yamatji Water Company's services include:

- Water Monitoring Services
- Compliance Reporting
- Commercial Water Arrangements
- Net Zero Waste Water Treatment Solution
 - De-salination services (industrial scale)



Future Partnership Opportunities

Yamatji Enterprises Limited (YEL) is dedicated to ensuring the economic prosperity of the Yamatji Nation for generations to come. YEL welcomes invitations from aligned organisations to establish new joint ventures.

BUSINESS SERVICES OVERVIEW

Yamatji Business Support (YBS) is a dedicated business development unit within YSRC that is aimed at fostering economic growth and business development within the Yamatji community. This initiative is designed to provide comprehensive support to Yamatji entrepreneurs and businesses, empowering them to thrive in the modern-day business environment. Our mission is to create a sustainable and inclusive economic environment that enhances the prosperity and self-determination of the Yamatji people and their businesses. YBS provides three pillars of service, these are business incubation support, workforce development and opportunities, and training opportunities.

Geraldton Foreshore,
Photographed by West Beach
Studio, Courtesy of the City of Greater
Geraldton

BUSINESS SERVICES CASE STUDIES



Any Moonie Maintenance

This year, the YBS team has supported local Yamatji business, Any Moonie Maintenance. Owned and managed by Clive Nutter, they provide maintenance and handyman services in the Northampton and Geraldton areas. Clive says he has seen a 50% increase in customer numbers through his efforts, following the support he received from the YBS team.

"I take a lot of pride in my work, and I enjoy it. I have high standards and I like to see my clients happier with the finished results I produce."

— Clive Nutter



Aatani Pathways

Founded by Alana Poland, a Wajarri, Nanda, Malgana, and Southern Yamatji woman, Aatani Pathways provides inclusive employment opportunities for Aboriginal peoples. The YBS team provided financial support to Alana when she was establishing Aatani Pathways, which contributed to the development of compliance structures, IT infrastructure & branding materials.

"As an Aboriginal Woman from the Midwest Region of Western Australia, I am very appreciative of the support that YBS and their helpful staff have provided for me." — Alana Poland

JOIN OUR JOURNEY



Binmaga Dance Group
(YSRC NAIDOC Event 2024)

CONTACT US

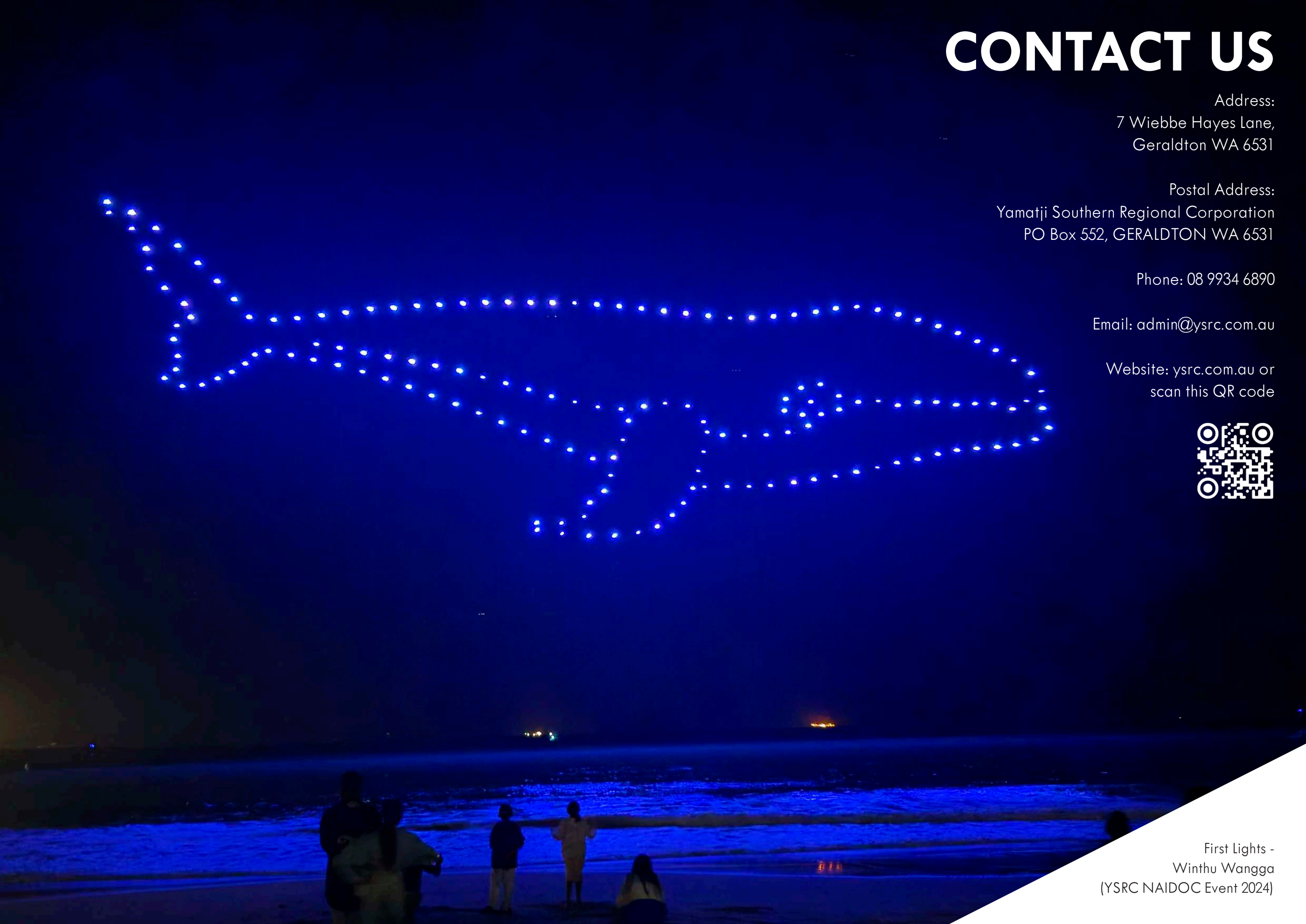
Address:
7 Wiebbe Hayes Lane,
Geraldton WA 6531

Postal Address:
Yamatji Southern Regional Corporation
PO Box 552, GERALDTON WA 6531

Phone: 08 9934 6890

Email: admin@ysrc.com.au

Website: ysrc.com.au or
scan this QR code



First Lights -
Winthu Wangga
(YSRC NAIDOC Event 2024)

