

ASIAN & PACIFIC ISLANDER AMERICANS IN HISTORIC PRESERVATION



SEATTLE, WA.  
SEPT. 12-15

# NATIONAL 2024 APIAHIPI FORUM

# NOTES

# TABLE OF CONTENTS

- 2 ABOUT APIAHP
- 3 BOARD, STAFF, & COMMITTEE
- 4 WELCOME
- 5 COMMUNITY & PUBLIC HEALTH
- 6 SCHEDULE AT-AT-GLANCE
- 8 PROGRAM MAP
- 10 THURSDAY. SEPT 12
- 13 FRIDAY. SEPT 13
- 16 SATURDAY. SEPT 14
- 20 SUNDAY. SEPT 15
- 21 SPONSORS
- 24 PROMOTIONS
- 36 NOTES





# ABOUT



*"a-p-i-a-hip"*

**The only national organization dedicated to protecting historic places and cultural resources significant to Asian and Pacific Islander Americans.**

APIAHiP was formed in 2007 when Asian and Pacific Islander American leaders noticed a lack of representation at state and national professional convenings on historic preservation and heritage conservation. With this gap, those founding members developed an APIA Caucus at the National Trust for Historic Preservation's annual conference that quickly evolved into Asian and Pacific Islander Americans in Historic Preservation or "APIAHiP" within the next few years.

In June 2010, APIAHiP developed and hosted the first National Asian and Pacific Islander American Historic Preservation Forum in San Francisco, California. This Forum brought together for the first time Asian and Pacific Islander Americans across the United States and its territories to share various issues and approaches to recognizing, preserving, and celebrating the places that best tell the stories of not only our diaspora but also our shared heritage. Through the next decade, APIAHiP successfully convened six National Forums.

Today, APIAHiP is a multi-generational, pan-ethnic, and interdisciplinary community of preservationists, urban planners, historians, educators, activists, and advocates who share the common goal of elevating Asian and Pacific Islander American history and heritage through a place-based ethic.

# BOARD

|                     |   |
|---------------------|---|
| Washington, DC      | Michelle Magalong, PhD, <i>Past President</i> |
| Los Angeles, CA     | Bill Watanabe, <i>Chair</i>                   |
| San Francisco, CA   | Karen Kai, <i>Vice Chair</i>                  |
| West Sacramento, CA | Jason Sarmiento, <i>Secretary</i>             |
| Oakland, CA         | Grant Din, <i>Treasurer</i>                   |
| Stockton, CA        | Tejpaul Singh Baniwal, PhD                    |
| Los Angeles, CA     | Caroline Calderon                             |
| Kensington, CA      | Erika Gee                                     |
| Los Angeles, CA     | Lisa Hasegawa                                 |
| Los Angeles, CA     | Kristen Hayashi, PhD                          |
| Washington, DC      | Sojin Kim, PhD                                |
| Los Angeles, CA     | Alan Kumamoto                                 |
| Los Angeles, CA     | Munson Kwok                                   |
| Los Angeles, CA     | Christina Park                                |
| Hagåtña, GU         | Joseph Quinata                                |
| Riverside, CA       | Rosalind Sagara                               |

# STAFF

|               |   |
|---------------|---|
| Seattle, WA   | Huy Pham, <i>Executive Director</i>         |
| Renton, WA    | Cameron Wong, <i>Development Specialist</i> |
| Arlington, VA | Zeta Atoigue, <i>Program Coordinator</i>    |

# 2024 FORUM COMMITTEE

|   |  |
|---|--|
| APIAHiP Staff                                 | Huy Pham, Cameron Wong, & Zeta Atoigue   |
| APIAHiP Board                                 | Jason Sarmiento, Caroline Calderon,<br>Erika Gee, Kristen Hayashi, & Sojin Kim |
| BIJAEMA                                       | Ellen Sato Faust   |
| 4Culture                                      | Emily Lawsins  |
| Friends of Little Saigon                      | Quynh Pham   |
| Historic Seattle                              | Eugenia Woo  |
| Historic South Downtown                       | MaryKate Ryan  |
| National Park Service                         | Chris Johnson, PhD   |
| Washington State<br>Office of Equity          | Nicholas Vann  |
| Washington Trust for<br>Historic Preservation | Moira Nadal  |
| Wing Luke Museum<br>& Community Member        | Wren Wheeler, Heather Chan,<br>& Doan Diane Hoang Dy<br>Cassie Chinn           |

# WELCOME



It's an honor to welcome you to **Seattle, Washington**, the host city of APIAHiP's seventh biennial National Asian & Pacific Islander American Historic Preservation Forum on September 12-15, 2024!

We are excited to offer program activities centralized in but not limited to Seattle's **Chinatown-International District** including **Japantown, Little Saigon, and Filipino Town** – the only area in the continental United States where Chinese, Japanese, Filipinos, African Americans, and Vietnamese have settled together and built one neighborhood. This neighborhood's recent listing, alongside **Philadelphia's Chinatown** and **Little Tokyo in Los Angeles**, as one of the National Trust for Historic Preservation's 11 **Most Endangered Places**, underscores our mission's urgency and relevance.

We also have the special opportunity to reach across **Puget Sound** to **Bainbridge Island** and outside the metro area as we dig deep to make meaningful connections within the Asian & Pacific Islander American diaspora throughout the **Pacific Northwest**.

By convening a multi-generational, pan-ethnic, and interdisciplinary group of preservationists, urban planners, historians, educators, activists, and advocates, we hope to achieve our theme of “**Building a national coalition to preserve local communities.**” Thank you for being here!



Sincerely,

HUY PHAM

Huy Pham,  
Executive Director  
Asian & Pacific Islander Americans  
in Historic Preservation



# COMMUNITY AGREEMENT

At the National APIAHiP Forum, we are committed to fostering a respectful and inclusive environment for all participants. As members and allies of the diverse Asian and Pacific Islander American diaspora, we bring unique perspectives and experiences to this gathering. It is essential to remember that while we come from different communities, our shared goal in "building a national coalition to preserve local communities."

We ask that all attendees engage in discussions and activities with respect, open-mindedness, and a commitment to constructive dialogue. Disparaging comments or conduct that undermine mutual respect and collaboration will not be tolerated.

---

# PUBLIC HEALTH POLICY

The health and safety of our community are our top priorities. We ask all attendees to be mindful of COVID-19 and other infectious illnesses, especially considering our most vulnerable community members. Masks and testing kits are available at the registration desks, and their use is encouraged.

If you feel unwell or test positive for COVID-19 before or during your time with us, you must self-quarantine and refrain from participating in program activities immediately to protect the health of others. By taking these precautions, we can ensure a safer and more inclusive environment for everyone.

---

Contact APIAHiP at [info@apiahip.org](mailto:info@apiahip.org) or (206) 414-9161.



# SCHEDULE

**Chong Wa Benevolent Association Building**  
522 7th Ave S



## THURSDAY 9/12

|           |                   |                                 |
|-----------|-------------------|---------------------------------|
| 9AM-NOON  | Registration      | Chong Wa Benevolent Association |
| 10AM-NOON | Welcome & Plenary |                                 |
| NOON-1PM  | Lunch On Your Own |                                 |
| 1-5PM     | Sessions (A/B)    | Wing Luke Museum                |
| 6-7:30PM  | Opening Reception |                                 |

## FRIDAY 9/13

|             |                   |                  |
|-------------|-------------------|------------------|
| 8AM-NOON    | Registration      | Wing Luke Museum |
| 9AM-NOON    | Sessions (A/B)    |                  |
| NOON-1PM    | Lunch On Your Own |                  |
| 1-5PM       | Sessions (A/B)    | Wing Luke Museum |
| 5:30-7:30PM | Museum + Tours    |                  |



**The Wing Luke Museum**  
719 S King St



# AT-A-GLANCE

## SATURDAY 9/14

|                 |                         |                   |
|-----------------|-------------------------|-------------------|
| <b>8:45AM</b>   | Ferry Leaves Seattle    | Bainbridge Island |
| <b>10AM-2PM</b> | Sessions + Lunch        |                   |
| <b>2-4PM</b>    | Bus Tour                |                   |
| <b>4:30PM</b>   | Ferry Leaves Bainbridge |                   |

|                    |              |                                  |
|--------------------|--------------|----------------------------------|
| <b>10AM-2:30PM</b> | Walking Tour | Chinatown International District |
|--------------------|--------------|----------------------------------|

|                 |                   |                    |
|-----------------|-------------------|--------------------|
| <b>6:30-8PM</b> | Closing Reception | Nippon Kan Theater |
|-----------------|-------------------|--------------------|



**Nippon Kan Theater**  
628 S Washington St

## SUNDAY 9/15

|                |                  |  |
|----------------|------------------|--|
| <b>9AM-1PM</b> | Bus Tour + Lunch | Chinatown International District to FANHS' National Pinoy Archives |
|----------------|------------------|--|

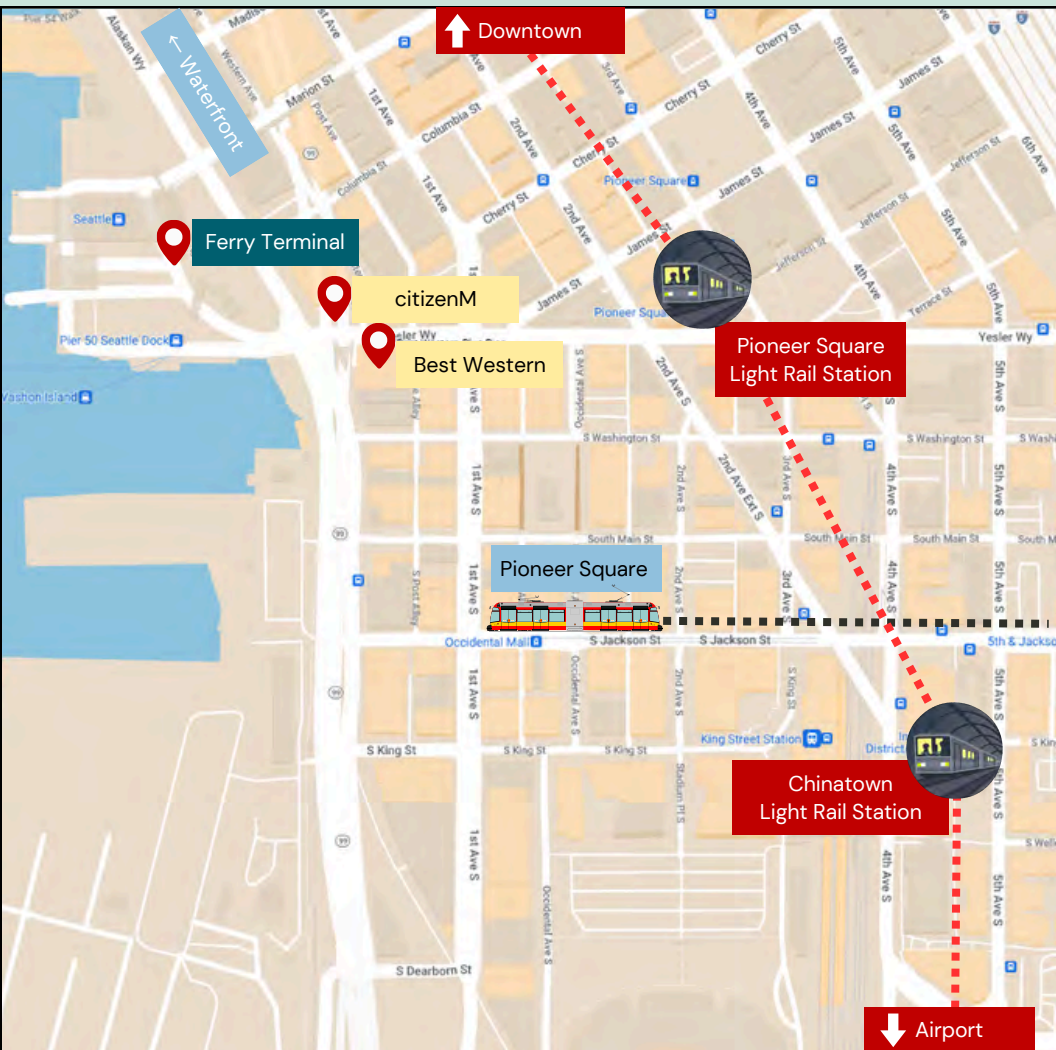
|                  |              |  |
|------------------|--------------|--|
| <b>10AM-NOON</b> | Walking Tour | Chinatown International District including Little Saigon |
|------------------|--------------|--|

|                 |                                |  |
|-----------------|--------------------------------|--|
| <b>NOON-1PM</b> | Closing Social & Service Event | Little Saigon Creative to Hoa Mai Park |
|-----------------|--------------------------------|--|



**Little Saigon Creative / Hello Em Viet Coffee**  
1227 S Weller St Suite A

# PROGRAM



1 mile | 1.6 km

## Affiliated Lodging

- Panama Hotel & Tea House – 605 South Main St .....➔
- American Hotel Hostel – 520 S King St
- CitizenM: Pioneer Square – 60 Yesler Wy
- Best Western Plus: Pioneer Square – 77 Yesler Wy



**Public Transportation** – using ORCA card, Transit GO app, or printed ticket at kiosks

- Sound Transit Link **Light Rail**
- First Hill **Streetcar** .....➔
- King County Metro **Buses**





## Program Venues

- **Chong Wa Benevolent Association** – 522 7th Ave S
- **Wing Luke Museum** – 719 S King St
- **Nippon Kan Theater** – 628 S Washington St
- **Little Saigon Creative | Hello Em Viet Coffee** – 1227 S Weller St
- **Hoa Mai Park** – 1224 S King St
- **Seattle Ferry Terminal to Bainbridge Island** – 801 Alaskan Wy  
(NOT the nearby King County Water Taxi / Kitsap Fast Ferries)

# THURSDAY, SEPTEMBER 12

---

## 9:00AM-NOON

### FIRST DAY MORNING REGISTRATION

#### CHONG WA BENEVOLENT ASSOCIATION – FIRST FLOOR ENTRANCE

Check in to receive your nametag, bag, and program materials.

We will provide donuts from Chinese-Cambodian family-owned *King Donuts*.

If you drink coffee, we recommend visiting the Vietnamese and Filipino American cafes in the Chinatown International District.

---

## 10:00-10:45AM

### WELCOME REMARKS

#### CHONG WA BENEVOLENT ASSOCIATION – SECOND FLOOR AUDITORIUM

Featuring:

- Bill Watanabe, Board Chair & Huy Pham, Executive Director, APIAHiP
  - Dr. Allyson Brooks – State Historic Preservation Officer (SHPO), Washington Department of Archaeology & Historic Preservation (DAHP)
  - Representative Sharon Tomiko Santos (WA-37)
  - The Wing Luke Museum
  - Ron Chew – Author of “My Unforgotten Seattle,” former museum director, healthcare executive, newspaper editor, and lifelong champion of the Chinatown International District.
- 

## 10:45AM-NOON

### OPENING PLENARY:

#### COMMUNITY ACTIVISM IN OUR MOST ENDANGERED NEIGHBORHOODS

#### CHONG WA BENEVOLENT ASSOCIATION – SECOND FLOOR AUDITORIUM

This plenary features community leaders from three historic Asian American neighborhoods recently listed on the National Trust for Historic Preservation’s Most Endangered Places list, discussing their community-driven responses and strategies for preservation in the face of this critical designation.

- Moderator: Di Gao, National Trust for Historic Preservation

#### PHILADELPHIA CHINATOWN

- Deborah Wei – Asian Americans United
- John Chin – Philadelphia Chinatown Development Corporation

#### SEATTLE CHINATOWN INTERNATIONAL DISTRICT

- Brien Chow – Transit Equity for All, Chong Wa Benevolent Association
- Joe Aki Reilly – Transit Equity for All, formerly Seattle Subway

#### LOS ANGELES LITTLE TOKYO

- Kristin Fukushima – Little Tokyo Community Council
- Kristen Hayashi – Japanese American National Museum, APIAHiP

## 1:00-5:00PM

### FIRST DAY AFTERNOON REGISTRATION WING LUKE MUSEUM - LOBBY

Check in to receive your nametag, bag, and program materials.

---

## 1:00-2:10PM

### WING LUKE MUSEUM – COMMUNITY HALL

#### New Communities from Old Trauma: Discovering Angel Island through Storytelling, 3D Models, and LEGO

- Grant Din – APIAHiP Board Member, Consultant for Angel Island Immigration Station Foundation
- Gail Okawa – Author, “Remembering Our Grandfathers’ Exile: U.S. Imprisonment of Hawai‘i’s Japanese in World War II”
- Ed Tepporn – Executive Director, Angel Island Immigration Station Foundation

### WING LUKE MUSEUM – TATEUCHI STORY THEATRE

#### Preserving South Asian Histories in the Pacific Northwest

- Tejpal Singh Bainiwal, PhD – APIAHiP Board Member, University of California Riverside
  - Amrit Deol – Sikh American History Project, Fresno State University
  - Johanna Ogden – Independent Historian and Activist
  - Sharanjit Kaur Sandhra – Historian, University of the Fraser Valley
  - Satpal Sidhu – Former CAPP Commissionner, Sikh Community Member from Whatcom County
- 

## 2:30-3:40PM

### WING LUKE MUSEUM – COMMUNITY HALL

#### Exploring & Expanding Methods: Emerging Scholarship in Historic Preservation

- Moderator: Anna Gasha, Doctoral Candidate in Historic Preservation at Columbia Graduate School of Architecture, Planning and Preservation
- Calvin Nguyen, Indiana Landmarks / University of Pennsylvania – “*Vietnamese Americana: Heritage & Identity-Making on South Philadelphia’s Washington Avenue*”
- Amanda Young, Washington University in St. Louis – “*Chinese Students, Jim Crow Schools: Voices from Oral Histories and Archives in the US South and Southcentral*”
- Samuel Leung, Rhode Island School of Design – “*Spatializing the Archive: New Considerations for Seattle’s Panama Hotel for Japanese American Heritage*”
- Rosa Woolsey, Whitman College – “*Documenting the Oldest Cambodian Temple in Washington: Cultural Sustainability through Preservation*”
- Sponsored by Sarah Marsom & the Tiny Activist project.

### WING LUKE MUSEUM – TATEUCHI STORY THEATRE

#### Forming a Historical Society to Preserve Your Neighborhood

- Bill Watanabe – Board, APIAHiP & Little Tokyo Historical Society
- Kristen Hayashi – Board, APIAHiP & Little Tokyo Historical Society
- Munson Kwok – Board, APIAHiP & Chinese Historical Society of Southern California
- Eugene Moy – Vice President, Chinese Historical Society of Southern California

# THURSDAY, SEPTEMBER 12

---

## 4:00-5:10PM

### WING LUKE MUSEUM – COMMUNITY HALL

#### What's So Special about Seattle's International Special Review District (ISRSD)?: Collaborative Efforts in Preserving Our Neighborhood

- Moderator: Eugenia Woo – Director of Preservation Services, Historic Seattle
- Tanya Woo – City of Seattle Councilmember, former IRSD Commissioner, & owner of historic Louisa Hotel apartments
- Rebecca Frestedt – ISRSD & Columbia City Landmark District Coordinator, City of Seattle Department of Neighborhoods
- Sokha Danh – Chinatown International District (CID) Community Capacity Advisor, City of Seattle Department of Neighborhoods, & owner of Mam's Bookstore

### WING LUKE MUSEUM – TATEUCHI STORY THEATRE

#### Case Studies in Public Partnerships for Heritage Conservation

- Jung Min (Kevin) Kim, PhD – Associate Director, Asian American Center, University of North Carolina, Chapel Hill – *"Preserving Legacy Asian & Pacific Islander American Restaurants in the Capital Region"*
- Tasha Elizarde – Co-Founder of Mana Alaska LLC – *"Public Media's Role in the Preservation of Alaska's Filipino American History"*
- Mark Pfeifer – Director of Programs, Hmong Cultural Center of Minnesota – *"Building a Hmong Cultural Center Museum in the Little Mekong District of St. Paul"*
- Gloria Lee – Board Vice President, C.A.C.A. Portland – *"Intersection of Colors and Cultures in Portland's Chinatown and Lan Su Chinese Garden"*

## 6:00-7:30PM

### WING LUKE MUSEUM – COMMUNITY HALL

#### OPENING RECEPTION: "Celebrating 10 Years of Beyond Integrity" hosted by 4Culture of King County [included with registration]

Join us to celebrate the first day of the National APIAHiP Forum and 4Culture's "coalition of advocates, elevating equity in preservation standards and practices by beyond architectural integrity when deciding what places we save." Food and drinks will be provided by Saigon Drip Cafe.



# FRIDAY. SEPTEMBER 13

---

## 8:00AM-NOON

### SECOND DAY MORNING REGISTRATION WING LUKE MUSEUM – LOBBY

Check in to receive your nametag, bag, and program materials.

We will provide donuts from Chinese-Cambodian family-owned *King Donuts*.

If you drink coffee, we recommend visiting the Vietnamese and Filipino American cafes in the Chinatown International District.

---

## 9:00-10:10AM

### WING LUKE MUSEUM – COMMUNITY HALL

#### Cultural Cartography: Vietnamese Boat People and Filipinx-Louisiana

- Tracey Nguyễn Mang & Lina Tran – Vietnamese Boat People – *"Journeys Maps: Preserving Our Stories"*
- Jessica Melendez Bayuga & Carolyn Sideco – Philippine-American Women's Association of Louisiana (PAWAL) and Bayou Barkada – *"Community-Sourcing a Matriating Lens for a Filipinx-Louisiana French Quarter Walking Tour"*

### WING LUKE MUSEUM – TATEUCHI STORY THEATRE

#### South Asian American Religious Architecture: Opportunities and Challenges for Preservation

- Priya Jain – Associate Professor, Texas A&M University, Department of Architecture
  - Humayra Alam – PhD Student, Texas A&M University, Department of Architecture
  - Anusha Prashant Khansaheb – Recent Graduate, University of Pennsylvania, Weitzman School of Design
- 

## 10:30-11:40AM

### WING LUKE MUSEUM – COMMUNITY HALL

#### New Leaders in Historic Spaces: United Approaches in Reclaiming Denver's Forgotten Chinatown

- Joie Ha – Executive Director, Colorado Asian Pacific United [CAPU]
- Molly Rose Merkert – Research Assistant, University of Colorado, Denver: Dana Crawford Historic Preservation Program
- Madison Lee & Jacob Jui – Rocky Mountain A.A.P.I. Student Coalition (RMASC)

### WING LUKE MUSEUM – TATEUCHI STORY THEATRE

#### Preserving the James and Grace Lee Boggs House: Social Justice and Cross-Racial Solidarity

- Scott Kurashige & Tiffany Lee – James and Grace Lee Boggs Foundation
- Theresa Hyuna Hwang – Director, Department of Beloved Places
- Omar Eaton Martinez – Senior Vice President for Historic Sites, National Trust for Historic Preservation



# FRIDAY. SEPTEMBER 13

---

## 1:00-2:10PM

### WING LUKE MUSEUM – COMMUNITY HALL

#### Preserving Chinatowns Through Grassroots & Economic Strategies

- Jacqueline Wang – Welcome to Chinatown, & Ashley So-Tang & Ethan Paik – HR&A Advisors – *"Building Intergenerational Spaces for Legacy Businesses & New Entrepreneurs in New York City's Chinatown"*
- Amy Zhou & Christie Li – Chinatown Community Development Center – *"Tale of Two Corridors: Community-led Proposals in San Francisco's Chinatown"*

### WING LUKE MUSEUM – TATEUCHI STORY THEATRE

#### Case Studies for Historic Preservation in the Pacific: Ewa Plantation & Mili Atoll

- Agnes Malate, Emy Tagama Keola, & Carolyn Weygan-Hildebrand – Ewa Villages Historical Society – *"Ewa Plantation Revisited: Yesterday, Today, and Tomorrow [Honolulu, Hawaii]"*
- Desun Oka – California State University, Sacramento – *"The Mili Atoll Uprising and Massacre [Marshall Islands]: Historic Preservation in Micronesia"*

---

## 2:30-3:40PM

### WING LUKE MUSEUM – COMMUNITY HALL

#### Reclaiming Place and the Narrative: Chinatown's Arts and Culture Awakening

- Joanne Lee – Executive Director, Edge on the Square, Chinatown Media and Arts Collaborative [San Francisco]
- Jenny Leung – Executive Director, Chinese Cultural Center of San Francisco
- Yin Kong – Director/Co-Found, Think!Chinatown [New York City]
- Mary Yee, Ed.D – Board, Asian Arts Initiative, Save Chinatown Coalition [Philadelphia]

### WING LUKE MUSEUM – TATEUCHI STORY THEATRE

#### Diversifying Our State and National Historic Registers and Landmarks

- Nicholas Vann – Washington State Office of Equity, former Department of Archaeology and Historic Preservation (DAHP, WA SHPO)
- Chris Johnson, PhD – Historian, Preservation and Partnerships Program, National Park Service (NPS)
- Michelle Magalong, PhD – University of Maryland & APIAHiP Past President
- Stephanie Toothman, PhD [recorded remarks] – Former Associate Director, Cultural Resources, Partnerships, and Science, National Park Service

## 4:00-5:15PM

### WING LUKE MUSEUM – COMMUNITY HALL

#### Community, Culture, and Change: The Resilience of Japantowns in the U.S.

- Susie Kagami – Executive Director, KOHO Creative Hub, San Francisco Japantown
- Kristin Fukushima – Executive Director, Little Tokyo Community Council, Los Angeles
- Jimi Kogura – 4th-Generation Family Business Owner, San Jose Japantown
- Scott Oshima – 4Culture, Seattle

### WING LUKE MUSEUM – TATEUCHI STORY THEATRE

#### Preservation on the Big Screen: Film as Advocacy [*\$10 RSVP required – limit 70*]

- “She Marches in Chinatown” [31 min] presented by Director Della Chen (Seattle)
- “Lil Tokyo Reporter” [Sei Fujii] [30 min] presented by Director Jeffrey Gee Chin and Lead Actor Chris Tashima (Los Angeles)

## 5:30PM-7:30PM

### WING LUKE MUSEUM

#### Private Access & Guided Tours [*included with registration*]

This time is dedicated and exclusive to National APIAHiP Forum attendees to explore our host venue and partner, the Wing Luke Museum: an art and history museum which focuses on the culture, art and history of Asian Americans, Native Hawaiians, and Pacific Islanders. Established in 1967, the museum is a Smithsonian Institution affiliate and the only pan-Asian Pacific American community-based museum in the United States.

Explore the entire museum to view the permanent and temporary exhibits or arrive in the **TATEUCHI STORY THEATRE by 5:45pm** to join one of three 45-minute guided walking tours in the Chinatown International District:

(A) Redlining Heritage Trail – limit 30

(B) Japanese American Remembrance Trail – limit 30

(C) US Immigration & Naturalization Service / INSCAPE Building – limit 15

## 7:00PM-9:00PM

### MAM'S BOOKSTORE – 608 Maynard Ave S

#### Filipino Town Seattle HISTORYaoke: Poetry & Music [*\$10 RSVP required – limit 50*]

Hosted by Filipino Town Seattle & Filipino American National Historical Society [FANHS]: *“Writers read an excerpt of literature and sing a karaoke song, in the historic Filipino Town / Chinatown-International District. We dedicate this show to the memory of the late Uncle Bob Santos, who was considered the Mayor of the International District, the original historic preservationist, and loved to sing karaoke every week at the old Bush Garden Restaurant.”*

# SATURDAY. SEPTEMBER 14

## 8:30-5:20PM [OPTION A]

### SPECIAL FIELD SESSION & TOUR ON BAINBRIDGE ISLAND

Centering Japanese American Exclusion and Agricultural Heritage Sites including the Bainbridge Island Filipino American Community Hall  
[\$10 RSVP Required]

#### 8:30AM

All attendees must arrive at the **Seattle Ferry Terminal** at this time. Meet up the stairs and look for the APIAHiP team gathering everyone together. We will be let in by security as a single pre-paid group around 8:45am, barring no delays.

*If you miss the group, you can catch the next ferry with your own ticket for \$9.85.*



#### 8:55-9:35AM

The ferry ride is approximately **40 minutes**. Once you are aboard, you are free to roam. There is indoor and outdoor seating, a cafe, vending machines, and visitor guides for your enjoyment. Please gather with the group once you hear the arrival announcement.



#### 9:35-10:00AM

We will take a **15-minute, half-mile walk to the Bainbridge Island Rowing (BIR) Center** upon arrival.

*Limited shuttle service is available for those in need. Please notify the APIAHiP team so we can accommodate via Kitsap Transit Dial-A-Ride or volunteer vehicle.*

Following the APIAHiP team as you exit the ferry terminal:

1. Take an immediate **← onto Olympic Dr NE (0.1 mile)**
2. Cross the street **← onto Harborview Dr SE (0.1 mile)**
3. Take a **→ onto the Waterfront Trail (0.3 mile)** until you arrive at BIR.



## 10:00-10:10AM

### WELCOME TO BAINBRIDGE ISLAND REMARKS

- Ellen Sato Faust, Executive Director – Bainbridge Island Japanese American Exclusion Memorial Association (BIJAEMA)
- Clarence Moriwaki – Bainbridge Island City Council Member

## 10:10-1:40PM

### SESSIONS & LUNCH

#### 1 – BATTER UP! The Manzanar Baseball Project, and Sport as Liberation Activity

Dan Kwong, Artist & Community Organizer [California]

#### 2 – Making Monuments through Storytelling: Beyond the Barbed Wire

Frank Abe & Friends of Minidoka [Idaho]

**LUNCH – provided by Town & Country Market**, a 3rd-generation Japanese-American family-owned grocery store founded on Bainbridge Island in 1957 by two brothers, John and Mo Nakata, and their friend Ed Loverich.

*Gluten-free and vegan lunches provided by The Marketplace.*

#### 3 – Preserving History, Building Communities: The Mukai Farm & Garden Restoration

Friends of Mukai [Washington]

#### 4 – Advocacy Updates from:

- **Amache National Historic** – Kirsten Leong, Vice President of the Amache Alliance
- **Minidoka National Historic Site and Tule Lake National Monument** – Dan Sakura, Sakura Conservation Strategies
- **Wakasa Memorial at Topaz National Historic Landmark** – Erin Shigaki, Wakasa Memorial Committee and Michelle Magalong, PhD, Associate Professor, University of Maryland and APIAHiP Past President.

## 1:40-2:00PM CLOSING REMARKS & LOAD TOUR BUSES

**2:00-3:30PM** TOUR STOP: Bainbridge Island Japanese American Exclusion Memorial

**3:30-4:00PM** TOUR STOP: Bainbridge Island Filipino American Community Hall

**4:00-4:20PM** DROP-OFF: Bainbridge Island Ferry Terminal for 4:40PM Departure

**4:40-5:20PM** RETURN TO SEATTLE: No fare needed; end of program.

(Closing Reception at Nippon Kan Theater begins at 6:30PM)

# SATURDAY. SEPTEMBER 14

---

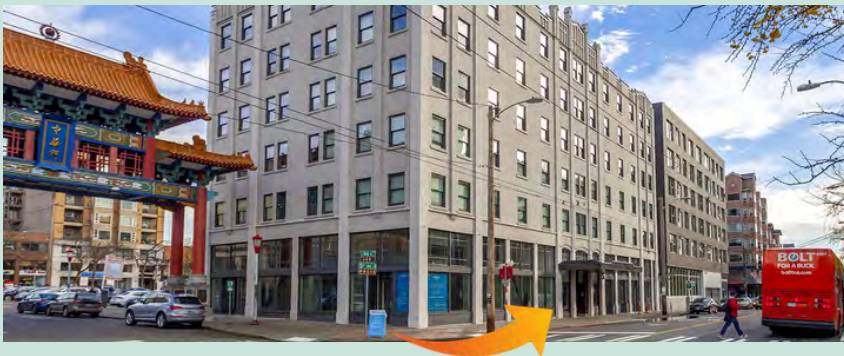
## 10:00AM-2:30PM [OPTION B]

### WALKING TOUR IN CHINATOWN INTERNATIONAL DISTRICT

**Historically Asian American Neighborhoods in Seattle: Preservation of the Chinatown-International District** [included with registration]

Seattle's Chinatown- International District (CID) is a rich and vibrant multicultural neighborhood with a complex history. It is distinctive for its cultural placemaking and cohesion of residents and businesses with a common vision of protecting and supporting the neighborhood. This tour includes multiple stops that highlight the neighborhood's long history of historic preservation through its vibrancy, culture, challenges to maintain affordable housing, and seismic retrofits.

Led by **Ron Chew**, lifelong champion of the neighborhood, and **Nicholas Vann**, Washington Office of Equity, former deputy State Historic Preservation Officer.



**10:00AM**

**Meet at Publix Apartment, next to Chinatown Gate –**  
Miye Moriguchi, Real Estate & Facilities Director at Uwajimaya Inc.

**10:40AM**

**Panama Hotel and Tea House**

**11:20AM**

**Kobo Shop & Gallery (at Higo) –** John Bisbee, Owner

**11:45AM**

**Lunch Break –** *Join the tour leaders at Tai Tung during the lunch break or find lunch on your own in the neighborhood. Please bring \$20 (cash or Venmo) if you would like to join us at Tai Tung.*

**1:00PM**

**Hing Hay Park –** Jamie Lee, SCIDpda

**1:15PM**

**Bush Hotel (Apartments) and International Examiner (Office)**

**1:40PM**

**Louisa Hotel (Apartments) –** Councilmember Tanya Woo, Owner

**2:20PM**

**Milwaukee Hotel (Apartments) –** Warner Lee, descendant of Goon Dip

**2:30PM**

**Tour Ends at Canton Alley**

(Closing Reception at Nippon Kan Theater begins at 6:30PM)

## 9:00AM-5:00PM [OPTION C]

### TOUR ON YOUR OWN or PERSONAL TIME

The following list does *not* comprehensively include all Asian and Pacific Islander American historic and cultural sites in Seattle, but we hope it sparks interest for those who are not joining us on the Bainbridge Island or Chinatown International District tours.

#### **Japanese American Legacies of the White River Valley –**

presented by the King County Historic Preservation Program on page 26–27.

#### **Japanese Cultural and Community Center of Washington (JCCCC) –**

1414 South Weller Street – Hosekibako Store: TH–SUN, 10AM–3PM

#### **Klondike Gold Rush National Historical Park – Seattle Unit in Pioneer Square**

319 2nd Ave S – WED–SUN, 10AM–5PM

#### **Seattle Asian Art Museum at Volunteer Park –**

1400 E Prospect St – WED–SUN, 10AM–5PM

#### **Seattle Chinese Garden –**

6000 16th Ave SW – THURS–SUN, 10AM–5PM

#### **Seattle Japanese Garden –**

1075 E Lk Washington Blvd – DAILY, 10AM–7PM

#### **Asian Pacific Cultural Center – Korean ChuSeok Festival**

Mt. Tahoma High School, 4634 S 74th, Tacoma – Saturday, Sept 14, 11AM–4PM

#### **Mukai Farm & Garden –**

18017 107th Ave SW, Vashon, WA – DAILY, 9AM–5PM

- *“Founded by Issei pioneer B.D. Mukai in 1926 as a strawberry farm, Mukai Farm & Garden today is on the National Register of Historic places with our rare heritage home, Japanese Garden, and Barreling Plant.”*

#### **Neely Mansion –**

12303 SE Auburn–Black Diamond Rd, Auburn, WA

Schedule a tour at [neelymansion.org/contact](http://neelymansion.org/contact) or call (253) 833–9404.

- *“Come see the land and river where the Coast Salish people fished for millennia. Hear the stories of later farm immigrants; the Neely, Galli, Fukuda, Hori, & Acosta families.”*

## 6:30-8:00PM

### NIPPON KAN THEATER

#### **CLOSING RECEPTION – \$10 RSVP Recommended, Walk-Up Allowed**

Join us in celebrating the last night of the National APIAHiP Forum in the newly restored Nippon Kan Theater at Kobe Park of Japantown, with remarks from:

- Eric Hayashi – owner of Nippon Kan Theater and Rainier Clinical Research Center
- Representative My Linh Thai (WA–41)
- Senator Joe Nguyễn (WA–47)
- Nam Nguyen, Executive Director & Carrie Huie, Commissioner – Washington State Commission on Asian Pacific American Affairs (CAPAA)
- Jenifer Chao, Director – Seattle Department of Neighborhoods

*Food and drinks will be provided by Baegopa.*

# SUNDAY. SEPTEMBER 15

---

## 8:45AM-1:00PM [OPTION A]

**BUS TOUR: Filipino American History of Seattle with the Filipino American National Historical Society (FANHS) and National Pinoy Archives (NPA)** [\$10 RSVP Required]  
**Meet at Hood Famous Cafe – 504 5th Ave S, near Chinatown Gate by 8:45AM.**

Join FANHS members on a bus tour around Seattle visiting sites of Filipino American history including Dr. Jose Rizal Park & Bridge and the Filipino Community Center of Seattle, before arriving at the FANHS National Headquarters and National Pinoy Archive featuring:

- Dr. "Auntie Dorothy" Laigo Cordova, Founder/Executive Director of FANHS National
- Emily P. Lawsin, 4Culture Historic Preservation Program Manager and FANHS National President Emerita (2020-2022)
- Mariecris Gatlabayan, FANHS Trustee & Digital Preservation Librarian University of Washington
- Cynthia Mejia-Giudici, FANHS Trustee Emerita
- Geo Quibuyen "Prometheus Brown", Blue Scholars / Beatrock Music / Hood Famous
- Ashley Dequilla, Philippine Heritage Collection at the Field Museum of Natural History and Filipino American Historical Society of Chicago [pre-recorded]

## 9:00AM-NOON [OPTION B]

**WALKING TOUR: Decades of Anti-Displacement Work: Chinatown International District & Little Saigon** [included with registration]  
**Meet at Hing Hay Park – 423 Maynard Ave S by 9:00AM.**

InterIm CDA & Friends of Little Saigon will showcase their efforts in serving the Chinatown-International District, including housing, small business support, and other community services. The tour will feature key sites and discuss a recent collaborative research project focused on addressing housing needs and preventing displacement in the community, led by:

- Derek Lum – Community and Advocacy Manager, InterIm CDA
- Leslie Morishita – Director of Real Estate, InterIm CDA
- Quynh Pham – Executive Director, Friends of Little Saigon

---

## 1:00-2:00PM

### CLOSING SOCIAL & SERVICE EVENT

**Meet at Little Saigon Creative – 423 Maynard Ave S by 1:00AM.**

Join us in giving back to the host community with a litter pick-up starting from Little Saigon Creative / Hello Em Viet Coffee and ending at the newly opened Hoa Mai Park. Connect with others while making a positive impact on the neighborhood as Forum officially concludes. This event is supported by:

- Historic South Downtown
- Friends of Little Saigon
- Chinatown-International District Business Improvement Area (CIDBIA)



# THANK YOU TO OUR SPONSORS

## HOST



Wing Luke Museum of the  
Asian Pacific American Experience

## JADE



## GOLD



CULTURE



National Trust *for*  
Historic Preservation  
*Save the past. Enrich the future.™*

pluto  
5000

GRANT DIN & ROSALYN TONAI, IN MEMORY OF LOUISE OWYANG

# THANK YOU

## SILVER



**ROSIE ABRIAM  
& STEVE LEE**



**NATIONAL**



# TO OUR SPONSORS

## BRONZE



# PRESERVATION PATHWAYS

*LAUNCHING – Preservation Pathways is the primary vehicle through which APIAHiP delivers educational activities, technical services, and strategic support to Asian & Pacific Islander American communities to reach their historic preservation goals.*

*Whether you are mapping your cultural heritage, navigating the historic designation process, restoring a building or site, or advocating for your neighborhood – we will meet you where you are to guide you toward success.*



LEARN MORE AT

[apiahip.org/pathways](https://apiahip.org/pathways)



@apiahip



info@apiahip.org

*Mapping Cultural Heritage on HistoryPin: East at Main Street*



*Navigating Historic Designation on Local, State, & National Registers*

*Exploring the Place-Based Histories of Asian & Pacific Islander Americans*

*Action in Place: Strategic Planning & Advocacy Activities*

*Preservation on Big Screen & Mixed Media Approaches*



*Chart Your Own Course! Customized Experiences*

# CALL FOR COMMUNITIES

We are launching Preservation Pathways by bringing the program **free of charge** to five communities in 2025, thanks to support from the Mellon Foundation, Shift Collective (HistoryPin), and the National Trust for Historic Preservation!

Apply at [apiahip.org/pathways](https://apiahip.org/pathways)

Priority will be given to applicants who

- Address our engagement gaps:
  - (A) Outside of CA, WA, and DC regions or
  - (B) within Pacific Islander, South Asian, and South East Asian American communities.
- Have access to a venue to host a workshop event
- Can promote the event and invite local attendees
- Has the capacity to partner with and host APIAHiP in Q1-2 of 2025.



with support from



historypin



National Trust for Historic Preservation



Outcomes can include presentations, workshops, tours, film screenings, strategic planning sessions, working meetings, community events, town halls, and more!







# Historic Preservation Program

## Japanese American Legacies in the White River Valley



~14 miles from Downtown Seattle |



*The farms and sites shown here are a very small (standing) representation of the hundreds of properties once owned, leased, worked, and managed by Japanese farming families in the White River Valley.*



Prior to incarceration during WWII, the upper White River Valley was home to a thriving Japanese American agricultural community.

### White River Garden Cooperative

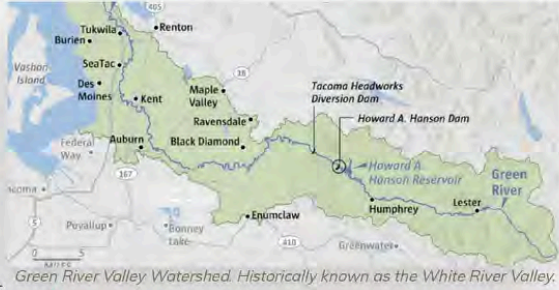
Successful farming cooperative comprised of 4 parcels co-owned by the Katsuno, Hirabayashi, Yokoyama, and Kurikawa families. Four houses built in 1918 remain along W Valley Hwy just south of S. 277th St.

### Thomas School

Built in 1928, this is the second school that served the Japanese community in the WRV. Classes were comprised of 60% Japanese American students prior to 1942. Hosted a class reunion of pre-WWII students in 1995.

### Yasumura Shed

George Yasumura was the largest rhubarb grower in the area, and his family ran a produce distribution center out of the original warehouse on this property. On May 22, 1942, this was the assembly site for Auburn area residents of Japanese descent, who boarded an 18-car train that took them to the Pinedale Assembly Center in California. They were then interned at Tule Lake or Minidoka concentration camps for the duration of the war.



### Auburn Pioneer/Japanese Cemetery

Started as the Faucett family burial ground in 1866, many of the Euro-American burials were moved 2 miles west above the floodplain in 1890. The local Japanese community began using the cemetery in the early 1900s, stewarded by the Natsuhara family. In 1912, the *Shirakawa Bukkyokai* (White River Buddhist Temple) formed a branch in the WRV, establishing a community institutional relationship with the cemetery.

### Neely Mansion & Hori Furoba

The main house was built in 1894 by Sarah and Aaron Neely. For much of the 20th century the Neely family leased the property to tenant farm families who lived and worked there, including Matasuke and Toki Fukuda and Shigeichi and Shimano Hori. This site also contains the only remaining c.1930 *Furoba* (bathhouse) in the valley, which were once commonplace wherever pre-WWII Japanese residents lived or worked.



For more information, scan to visit King County's Historic Preservation Program resource page →







**NJAMF**  
NATIONAL JAPANESE AMERICAN  
MEMORIAL FOUNDATION

# Honoring the Past, Shaping the Future

The National Japanese American Memorial Foundation honors the patriotism of Japanese Americans during World War II, uplifting their stories to safeguard the constitutional rights of all.

Thank you to the 2024 National APIAHIP Forum attendees for championing the preservation of Asian & Pacific Islander American heritage in our historic communities.

[njamemorial.org](http://njamemorial.org)

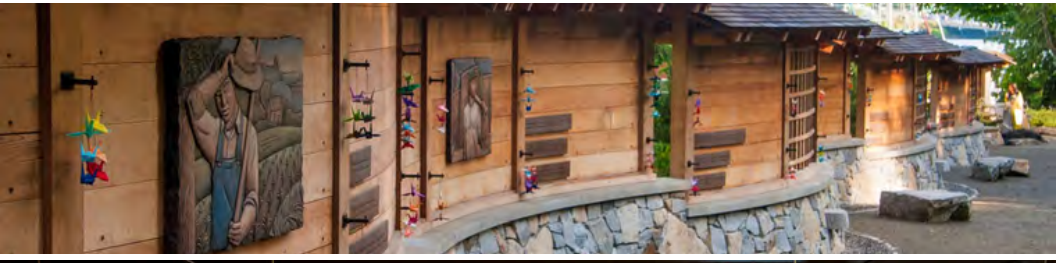


# The Bainbridge Island Japanese American Exclusion Memorial

**Be part of our community**—a community that cherishes the Bainbridge Island Japanese American Exclusion Memorial and the vital lessons it imparts.

**Your support is crucial** in our ongoing capital campaign to construct the Memorial's final phase, the Visitor Center.

**Learn more & support the Visitor Center Capital Campaign**



## Historic EVENT SPACE

Whether you're planning a corporate conference, a wedding reception, a live performance, or a cultural event, the Nippon Kan Theatre offers a unique and versatile setting to bring your vision to life.

- Newly remodeled, on National Historic Register
- Accommodates multiple event types
- 10,000sf 463 capacity, green room / bridal suite
- 32 street-level parking stalls on site
- Quiet neighborhood feel
- Transit score 100, highly accessible to I-5 & I90
- Intersection of Int'l Dist, Pioneer Sq and CBD
- Easy in-and-out equipment loading
- Adjacent to beautiful Kobe Park





# CELEBRATING 10 YEARS OF BEYOND INTEGRITY



4Culture's Historic Preservation Program is proud to support the APIAHiP National Forum

**GRANTS AT [4CULTURE.ORG/PRESERVATION](https://4culture.org/preservation)**

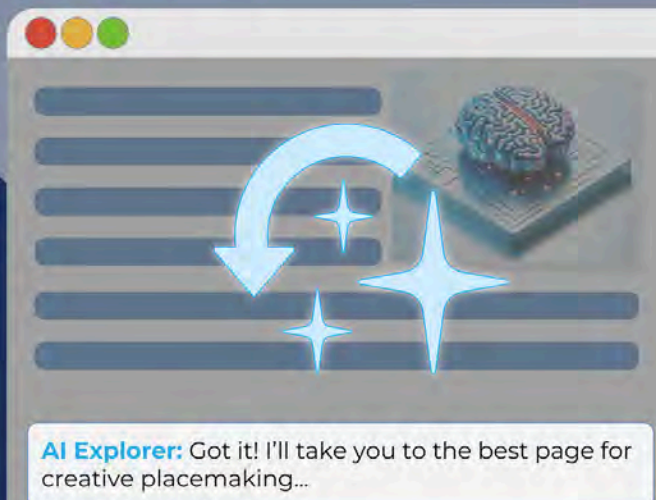
*Dig into Beyond Integrity's research at [4culture.org/beyond-integrity](https://4culture.org/beyond-integrity)*

# AI Explorer™ by pluto 5000

AI Command Center for  
Simplifying Personalized  
Outreach & Engagement



Learn More  
[pluto5000.com](https://pluto5000.com)



Washington's Annual  
Preservation, Placemaking &  
Economic Vitality Conference

# PLACES



OCTOBER 16-18, 2024

Program, registration, and more info at:  
[presewwa.org/conference](http://presewwa.org/conference)



[LATINOHERITAGE.US/LATINXPRESERVATIONTOOLKIT](http://LATINOHERITAGE.US/LATINXPRESERVATIONTOOLKIT)



**THE  
ABUELAS  
PROJECT**  
LATINOS IN HERITAGE CONSERVATION



[LATINOHERITAGE.US/ABUELASPROJECT](http://LATINOHERITAGE.US/ABUELASPROJECT)





# Preserving a Shared Heritage: The **Young Korean Academy** Historic Site (Los Angeles Historic-Cultural Monument No.1114)



The Ministry of Patriots and Veterans Affairs (MPVA) of the Republic of Korea is proud to support the preservation of Korean American heritage in the United States through the rehabilitation of the Young Korean Academy Historic Site in Los Angeles.

This project symbolizes the enduring bond between Korea and the United States, celebrating our shared history and collective memories.

*“Honoring the Legacy of Korean American History”*



The MPVA is seeking **strategic partnerships** with preservation advocacy groups, museums, and educational institutions for the future operation of this valuable historic site.

We are open to discussing opportunities for collaboration to ensure the ongoing preservation and educational use of the Young Korean Academy.

If interested, please feel free to contact the MPVA for further discussion.

#### Contact Information

Memorial Facility Management Division  
Ministry of Patriots and Veterans Affairs, Republic of Korea  
Email: [spitter@korea.kr](mailto:spitter@korea.kr) | Phone: +82.44-202-5565



Ministry of Patriots and  
Veterans Affairs

# MASTO FOUNDATION

Is thrilled to celebrate



We are grateful to be in community with  
all of you and our grantee partners  
Friends of Minidoka, Densho, and  
KOHO  
Wishing Everyone  
a Wonderful Forum!



## THE CHINESE AMERICAN CITIZENS ALLIANCE

and members of our  
20 Lodges from  
across the United  
States congratulate  
APIAHIP on a most  
successful Forum in  
Seattle,  
September 2024.



BAINBRIDGE  
ISLAND  
ROWING

## COMPETITIVE & RECREATIONAL ROWING PROGRAMS

## LEARN TO ROW CLASSES

## VENUE RENTALS

Rowing on Bainbridge Island since 2001.  
Join our Junior & Adult Programs or  
reserve our waterfront venue  
for your next event!

Learn more at  
[bainbridgerowing.org](http://bainbridgerowing.org)



**BIR**  
ROWING CHANGES LIVES

## NATIONAL PRESERVATION PARTNERS NETWORK



*A Supportive Community of Colleagues  
Free Training Webinars for Members  
Spring & Fall Member Convenings  
Eligibility for Grant Funding  
Effective Tools for Saving Historic Places*

Does your organization work  
to save the places your  
community treasures?

We're here for you.

Learn more at  
[PresPartners.org](http://PresPartners.org)



# Get a boost to homeownership with the Covenant Homeownership Program



## Deep roots in Washington State?

You could be eligible for a new program providing up to 20% down on a modest-priced home.

This program may be for you if:

- You or a parent/grandparent lived in Washington state before 1968
- That person is Black, Hispanic, Indigenous, Pacific Islander, Korean, or Asian Indian
- Your income is at/below median income in your county
- You are a first-time homebuyer, have not owned a home in three years, or have only owned a home in certain circumstances

Contact us to learn more!



### Jenny Lyn Tran

Mortgage Loan Officer, NMLS# 1454919  
New American Funding

(206) 290-5163

[jennylyn.tran@nafinc.com](mailto:jennylyn.tran@nafinc.com)



### Vy Lê-Nasuti

Real Estate Agent  
Coldwell Banker Bain

(808) 699-6695

[vy.lenasuti@cbcrealty.com](mailto:vy.lenasuti@cbcrealty.com)

Language(s) Spoken:Tiếng Việt and English



**COVENANT**  
Homeownership  
Program

The Covenant Homeownership Program is a program of the Washington State Housing Finance Commission. The Commission does not endorse a person, business practice, product or service other than those of the Commission.

**Saigon Drip**  
Cafe



Visit Our  
Restaurant

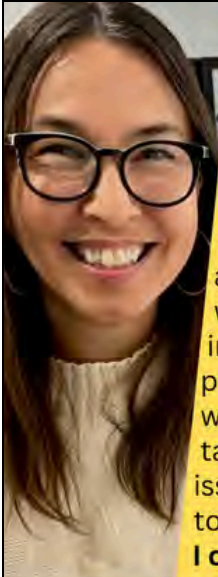
## FRESH AUTHENTIC VIETNAMESE



**161 S Washington St  
Seattle WA 98118**

[www.SaigonDripCafe.com](http://www.SaigonDripCafe.com)





“I didn’t know preservation was a profession; then I went to APIAHiP’s Forum. I found the topics really interesting and different from what I was seeing in mainstream preservation. They weren’t afraid to talk about hard issues. So I started to think, **maybe I could do this.**”

– Emi Takahara (USC MHC ’23), now working in historic preservation consulting

[arch.usc.edu](http://arch.usc.edu)

**USC** Architecture  
*Heritage Conservation Program*

## CALL FOR PROPOSALS

CONTRIBUTE TO OUR BOOK PROJECT ON

## ASIAN AMERICAN PLACES OF HERITAGE

ABSTRACT DEADLINE:  
OCTOBER 15, 2024

INVITING SCHOLARS, PRACTITIONERS,  
AND COMMUNITY GROUPS



### WE WELCOME PROPOSALS FOR:

Project/Community Profiles

1000-1500 words

Case Study or Short Chapters

3000-3500 words

Full Scholarly/Academic Chapters

5000-6000 words

Scan the QR code for  
further details!



### Questions? Contact:

Dr. Ashima Krishna

[krish191@purdue.edu](mailto:krish191@purdue.edu)

Dr. Nathan Swanson

[swanso64@purdue.edu](mailto:swanso64@purdue.edu)

Purdue University

2024  
James Beard  
SPRAY

[thephobac.com](http://thephobac.com)

THE  
BOAT  
COM DA SIUO

LITTLE SAIGON  
11AM-9AM

PHỞ  
BẮC

LITTLE SAIGON  
& DOWNTOWN  
10AM-9AM



DOWNTOWN  
11AM-9AM

[archenvironment.uoregon.edu/hp/](http://archenvironment.uoregon.edu/hp/)



UNIVERSITY OF OREGON

HISTORIC PRESERVATION

MASTER OF SCIENCE



# NOTES

# NOTES



NEWSLETTER



DONATE



SURVEY



info@apiahip.org  
(206) 414-9161



apiahip.org