

# ICONIC

NORTH BETHESDA CAMPUS

# RE—

# IMAGINED







# AN AMBITIOUS REVITALIZATION INTO A

# MULTI — FUNCTIONAL WORKPLACE

## LOCATION

- + Direct access to I-270 Spur
- + One mile from I-495
- + 80,000 SF block available on the top stack of 6903 with I-270 signage

## WORK

- + On-site conference center with new A/V technology
- + Flexible gathering places and on-site conveniences
- + Move-in ready options

## SPACE

- + Office campus totaling 710,000SF
- + Covered parking garage with EV charging stations
- + Fully renovated lobby
- + Common areas with sleek finishes

## LIFE

- + Indoor/outdoor cafe
- + White-glove, on-site tenant services management
- + On-site daycare
- + Campus setting with updated outdoor amenities





STAY CONNECTED

- 5 MI. Bethesda, MD Downtown
- 10 MI. Washington, DC Downtown
- 18 MI. Reagan National Airport
- 25 MI. Dulles International Airport



CONVENIENT ACCESS

CapRock is located in Bethesda's ever-growing market, giving seamless access to all this area has to offer.

Adjacent to I-270 with easy access

to I-495, the campus offers comfortable commutes to downtown and transportation hubs.





# INTEGRATING FUNCTIONAL DESIGN WITH — AESTHETIC FINESSE

"Today's workforce demands flexibility and on-site conveniences.

State-of-the-art amenities, activated green-spaces and renovated common areas are what we deliver."

## ACTIVATE

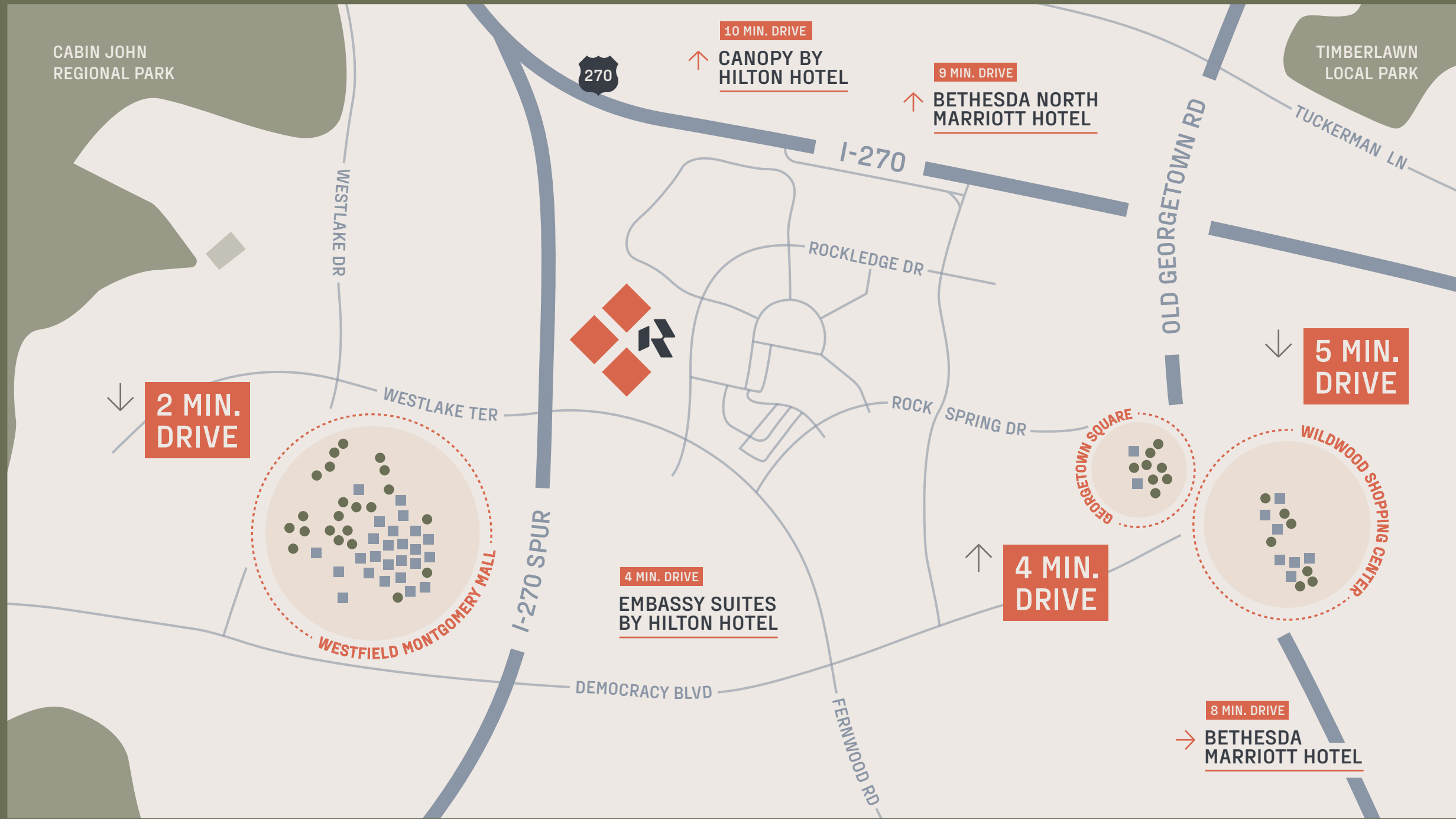
- + Sun-filled two floor lobby
- + Revitalized fitness center
- + Open air amenities for outdoor entertainment

## GATHER

- + Collaborate in adaptable conference spaces with seating for 120+
- + Innovate at the conference lounge, premium coffee bar or outdoor terrace.



# LOCATION AMENITIES



## FOOD ●

### Westfield Montgomery Mall

- + California Pizza Kitchen
- + Cava
- + Chick-fil-A
- + Ledo Pizza
- + Shake Shack
- + The Cheesecake Factory
- + [More](#)

### Georgetown Square

- + Gong Cha
- + Chipotle
- + Not Your Average Joe's
- + Giant Grocery
- + [More](#)

### Wildwood Shopping Center

- + Starbucks
- + Bethesda Bagels
- + Flower Child
- + Chopt
- + [More](#)

## RETAIL ■

### Westfield Montgomery Mall

- + Nordstrom
- + Macy's
- + Lucky Strike Lanes
- + AMC Theatres
- + [More](#)

### Georgetown Square

- + Designer Shoe Warehouse
- + Washington Sports Club
- + [More](#)

### Wildwood Shopping Center

- + Blue Mercury
- + J. McLaughlin
- + Solid Core
- + CVS
- + [More](#)

STAY — FOOD ● RETAIL ■

## EVERYTHING WITHIN REACH

Nearby major shopping centers make it easy to accomplish both retail adventures and errands. With quick access to entertainment, hotels, and restaurants, you can experience the best that the area has to offer.

5 MI.

Downtown  
Bethesda

10 MI.

Downtown  
Washington, DC

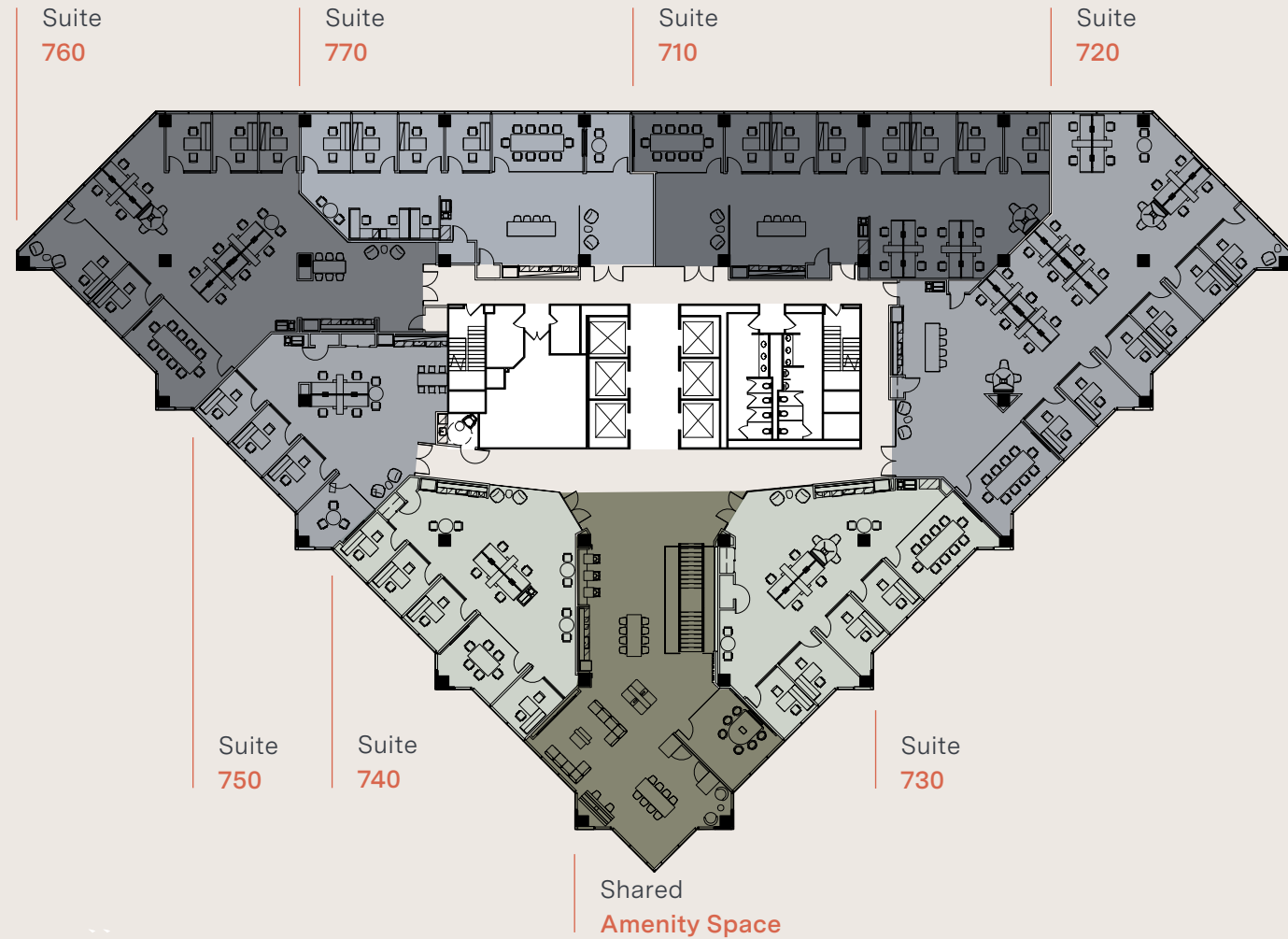


# FLEXIBLE SPACES BUILT FOR — GROWING TEAMS





# 7TH FLOOR



## SPEC SUITES

Suite 710  
4,155 RSF

Suite 720  
5,548 RSF

Suite 730  
2,896 RSF

Suite 740, 750  
2,328 RSF

Suite 760  
4,173 RSF

Suite 770  
3,052 RSF

## BENEFITS

- + Move-in ready suites
- + Professionally designed with customizable touches
- + Staffed by a Community Manager
- + Open lounge + Shared Pantry



## YOUR LANDLORD MATTERS

At CP Group, we place a premium on customer service and pride ourselves on transforming spaces into activated environments that drive productivity, build community and help you attract and retain quality talent.

## CP GROUP HIGHLIGHTS

\$8B+

Assets Managed,  
Acquired, Developed

56+MM

Square Feet Owned  
and Managed to Date

36+

Years of CRE Experience

170+

Acquisitions

# CONTACT US

**Bernie McCarthy**

Executive Managing Director, JLL

bernie.mccarthy@jll.com

301 287 3263

**Amanda Davis**

Senior Managing Director, JLL

amanda.davis@jll.com

301 287 9970

**Danny Sheridan**

Managing Director, JLL

danny.sheridan@jll.com

301 287 9922

**Patrick Hall**

Senior Associate, JLL

patrick.hall@jll.com

301 287 9931



This information has been obtained from sources believed reliable but has not been verified for accuracy or completeness. You should conduct a careful, independent investigation of the property and verify all information. Any reliance on this information is solely at your own risk. Content herein is the property of CP Group. Use of these images without the express written consent is prohibited.

caprockoffice.com