

# Herbert Park Residential 2

Applicant: Derryroe Ltd

## Method Statement - Photomontage production

1. The Permitted views are the views as lodged with the SHD application, as these do not account for the changes to massing under condition 2 and materials under condition 3 however, the proposed scheme does take these into account.

2. Photographs are taken from locations as advised by client with a full frame SLR digital camera and prime lens. The photographs are taken horizontally with a survey level attached to the camera. The photographic positions are marked (for later surveying), the height of the camera and the focal length of the image recorded.

3. In each photograph, a minimum of 3no. visible fixed points are marked for surveying. These are control points for model alignment within the photograph. All surveying is carried out by a qualified topographical surveyor using Total Station / GPS devices.

4. The photographic positions and the control points are geographically surveyed and this survey is tied in to the site topographical survey supplied by the Architect / client.

5. The buildings are accurately modelled in 3D cad software from cad drawings supplied by the Architect. Material finishes are applied to the 3D model and scene elements are placed like trees and planting to represent the proposed landscaping.

6. Virtual 3D cameras are positioned according to the survey co-ordinates and the focal length is set to match the photograph. Pitch and rotation are adjusted using the survey control points to align the virtual camera to the photograph. Lighting is set to match the time of day the photograph is taken.

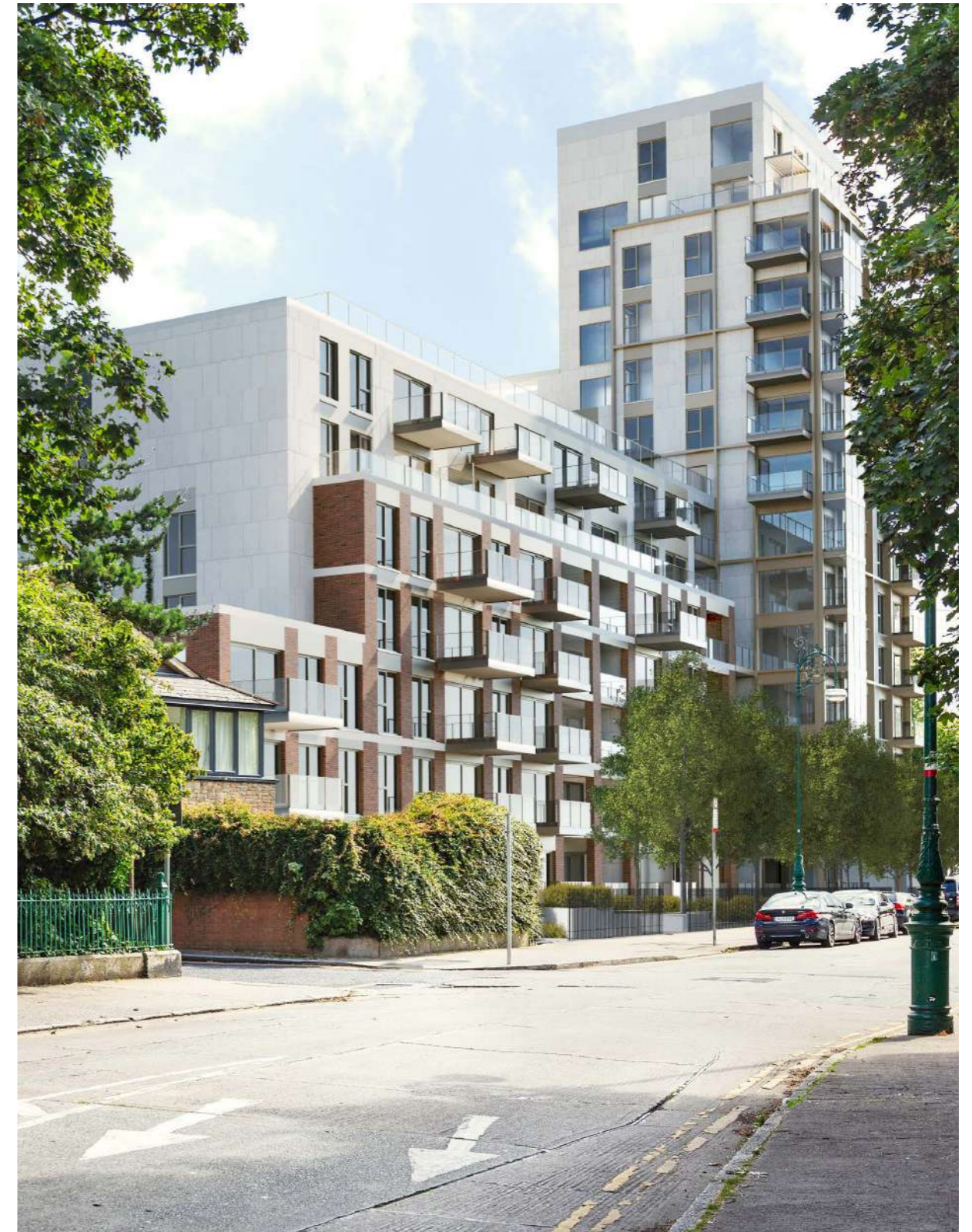
7. The proposed development is output from the 3D software using this camera and the image is then blended with the original photograph to give an accurate image of what the proposed development will look like in its proposed setting.

8. In the event of the development not being visible, the roof line of the development will be outlined in red if re-requested.

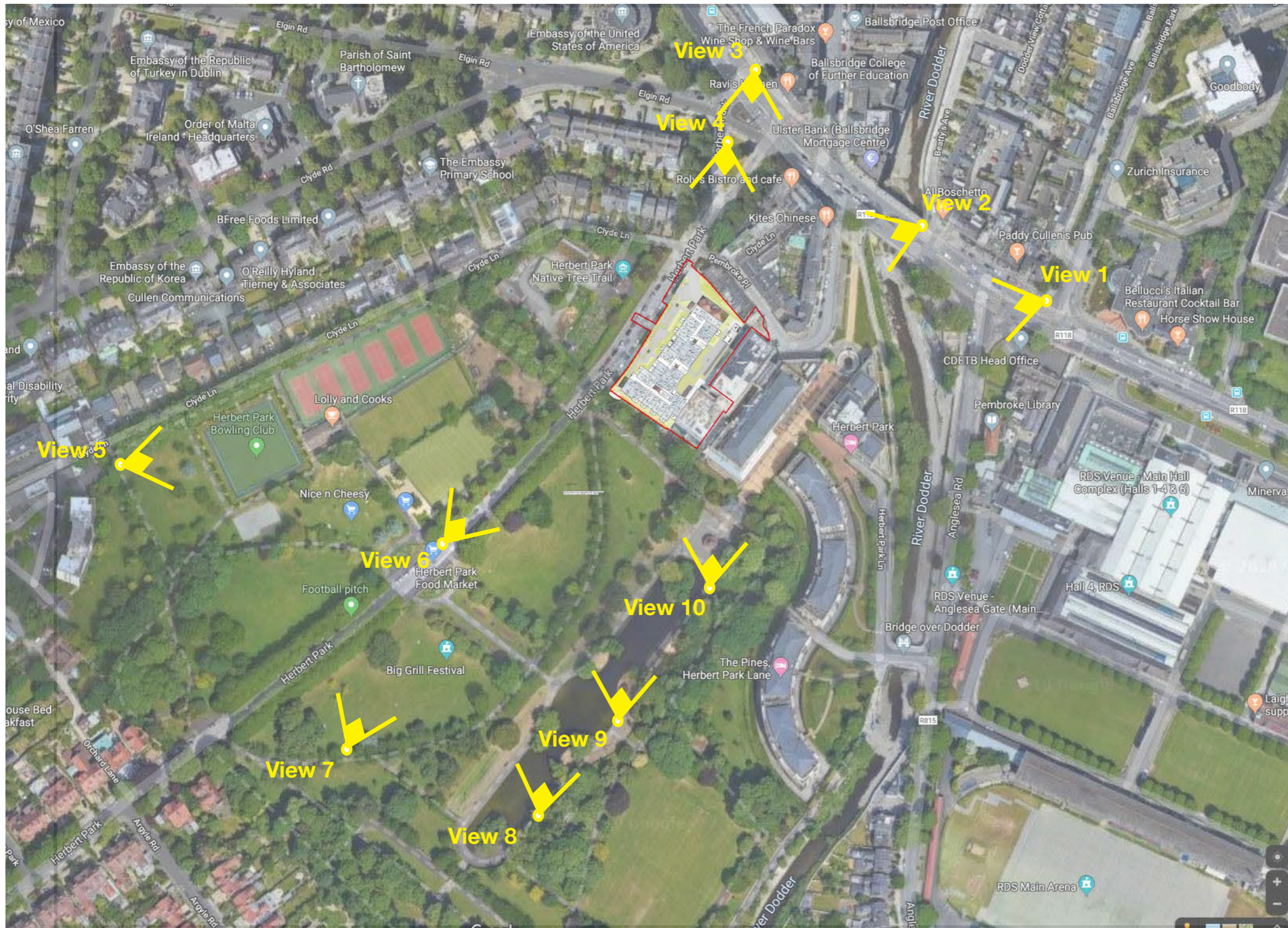
9. The document contains:

- a) Site location map with view locations plotted.
- b) Photomontage sheet with existing or proposed conditions.
- c) Reference information including field of view/focal length, range to site / development, date of photograph.

10. The proposed view will contain the building where visible or partially visible. Where the building is not visible or where the visible proportion of the building is not perceptible then a redline will indicate the extent of the proposed development in the background. Where there are other developments in the vicinity with planning permission or under construction a blue line and or grey massing will represent the adjacent development.







Location Map





View 01

Location	Date	Field of view	35mm equivalent	Distance to site	Camera model
View 1 Existing	22-07-2019	65°	28mm	180m	Canon EOS 5DS





View 01

Location	Date	Field of view	35mm equivalent	Distance to site	Camera model
View 1 Compliance	22-07-2019	65°	28mm	180m	Canon EOS 5DS





View 01

Location	Date	Field of view	35mm equivalent	Distance to site	Camera model
View 1 Proposed	22-07-2019	65°	28mm	180m	Canon EOS 5DS





View 01

Location	Date	Field of view	35mm equivalent	Distance to site	Camera model
View 1 Compliance (winter)	11-12-2019	65°	28mm	180m	Canon EOS 5DS





View 01

Location	Date	Field of view	35mm equivalent	Distance to site	Camera model
View 1 Proposed (winter)	11-12-2019	65°	28mm	180m	Canon EOS 5DS





View 02

Location	Date	Field of view	35mm equivalent	Distance to site	Camera model
View 2 Existing	22-07-2019	74°	24mm	125m	Canon EOS 5DS





View 02

Location	Date	Field of view	35mm equivalent	Distance to site	Camera model
View 2 Compliance	22-07-2019	74°	24mm	125m	Canon EOS 5DS





View 02

Location	Date	Field of view	35mm equivalent	Distance to site	Camera model
View 2 Proposed	22-07-2019	74°	24mm	125m	Canon EOS 5DS





View 02

Location	Date	Field of view	35mm equivalent	Distance to site	Camera model
View 2 Compliance (winter)	11-12-2019	74°	24mm	125m	Canon EOS 5DS





View 02

Location	Date	Field of view	35mm equivalent	Distance to site	Camera model
View 2 Proposed (winter)	11-12-2019	74°	24mm	125m	Canon EOS 5DS





View 03

Location	Date	Field of view	35mm equivalent	Distance to site	Camera model
View 3 Existing	22-07-2019	74°	24mm	109m	Canon EOS 5DS





View 03

Location	Date	Field of view	35mm equivalent	Distance to site	Camera model
View 3 Compliance	22-07-2019	74°	24mm	109m	Canon EOS 5DS





View 03

Location	Date	Field of view	35mm equivalent	Distance to site	Camera model
View 3 Proposed	22-07-2019	74°	24mm	109m	Canon EOS 5DS





View 03

Location	Date	Field of view	35mm equivalent	Distance to site	Camera model
View 3 Compliance (winter)	11-12-2019	74°	24mm	109m	Canon EOS 5DS





View 03

Location	Date	Field of view	35mm equivalent	Distance to site	Camera model
View 3 Proposed (winter)	11-12-2019	74°	24mm	109m	Canon EOS 5DS





View 04

Location	Date	Field of view	35mm equivalent	Distance to site	Camera model
View 4 Existing	15-08-2023	67°	27mm	47m	Canon EOS 5DS





View 04

Location	Date	Field of view	35mm equivalent	Distance to site	Camera model
View 4 Compliance	15-08-2023	67°	27mm	47m	Canon EOS 5DS





View 04

Location	Date	Field of view	35mm equivalent	Distance to site	Camera model
View 4 Proposed	15-08-2023	67°	27mm	47m	Canon EOS 5DS





View 04

Location	Date	Field of view	35mm equivalent	Distance to site	Camera model
View 4 Compliance (winter)	11-12-2019	65 °	28mm	47m	Canon EOS 5DS





View 04

Location	Date	Field of view	35mm equivalent	Distance to site	Camera model
View 4 Proposed (winter)	11-12-2019	65 °	28mm	47m	Canon EOS 5DS





View 05

Location	Date	Field of view	35mm equivalent	Distance to site	Camera model
View 5 Existing	22-07-2019	74°	24mm	290m	Canon EOS 5DS





View 05

Location	Date	Field of view	35mm equivalent	Distance to site	Camera model
View 5 Compliance	22-07-2019	74°	24mm	290m	Canon EOS 5DS





View 05

Location	Date	Field of view	35mm equivalent	Distance to site	Camera model
View 5 Proposed	22-07-2019	74°	24mm	290m	Canon EOS 5DS





View 05

Location	Date	Field of view	35mm equivalent	Distance to site	Camera model
View 5 Compliance (winter)	11-12-2019	74°	24mm	290m	Canon EOS 5DS