



545 McBride Avenue, Neepawa, Manitoba

Commercial Opportunity in the heart of Neepawa, MB

For Sale/Lease ➤

Property Details

+/- 5,620 sq. ft.

TOTAL BUILDING SIZE

+/- 14,503 sq. ft.

TOTAL LAND SIZE

\$650,000

SALE PRICE

\$7,000/month

ASKING RENT

\$7,571.61

2024 PROPERTY TAXES

CH - Highway Commercial

ZONING

Features

- Property offers a blend of functionality and potential, ideal for investors or businesses seeking a presence in this vibrant community
- +/- 1,020 sq. ft. front office/showroom area
- +/- 4,600 sq. ft. main production shop/storage/loading area
- Property is approximately 90' wide by 160'
- Selling on as-is basis - buyer to complete own due diligence



Highlights



Prime Location

IN DOWNTOWN
NEEPAWA



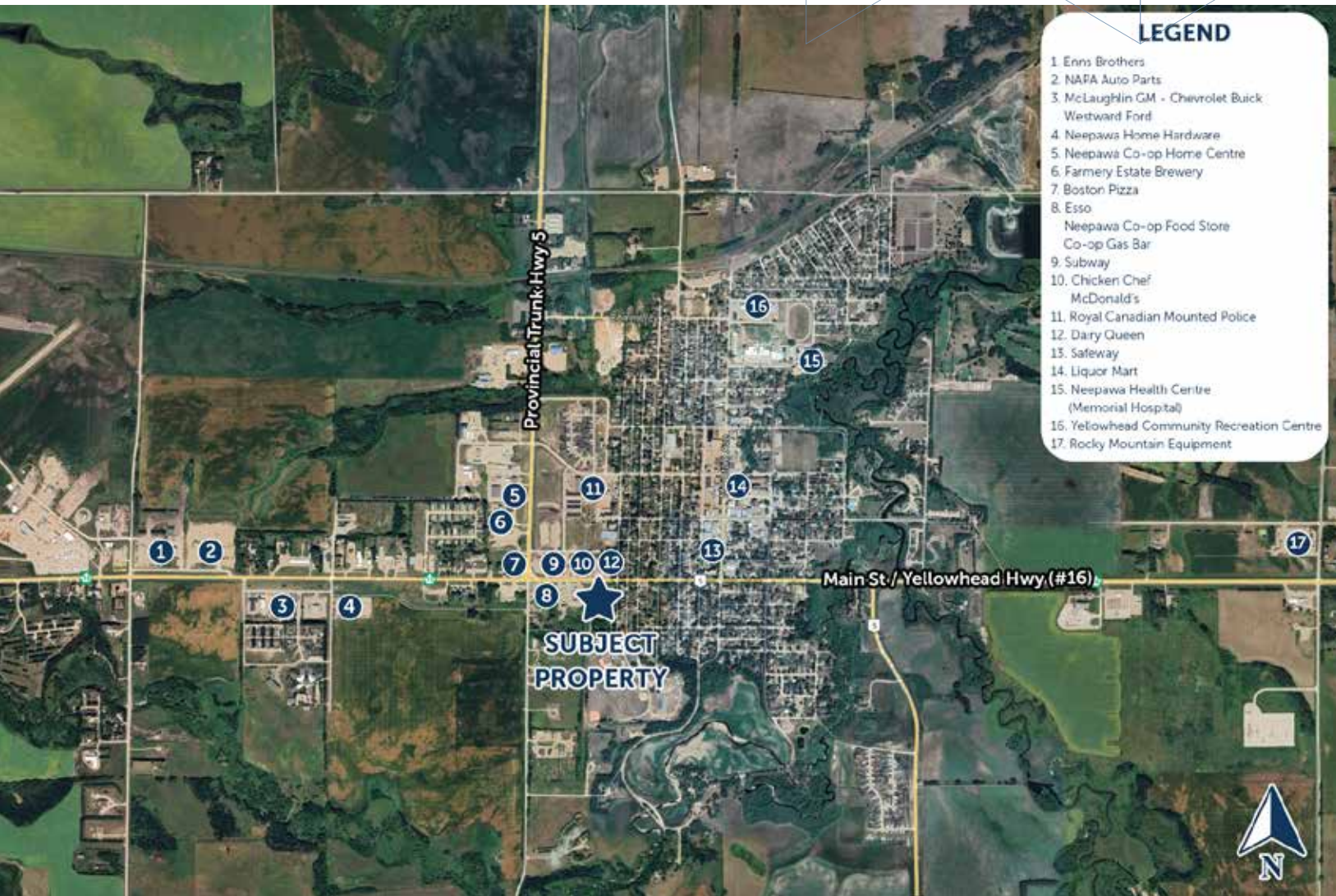
Dominant

BUILDING SIGNAGE
OPPORTUNITIES



Excellent On-Site

PARKING



Connect with us today!

iciproperties.com

Ken Zacharias

VICE PRESIDENT

kzacharias@iciproperties.com

204-795-8040

DISCLAIMER Although information has been obtained from sources deemed reliable, neither Owner nor ICI Properties makes any guarantees, warranties or representations, expressed or implied, as to the completeness or accuracy as to the information contained herein. Any projections, opinions, assumptions or estimates used are for example only. There may be differences between projected and actual results, and those differences may be material. Purchasers must perform their own due diligence. The Property may be withdrawn without notice. Neither Owner nor ICI Properties accepts any liability for any loss or damage suffered by any party resulting from reliance on this information. If the recipient of this information has signed a confidentiality agreement regarding this matter, this information is subject to the terms of that agreement. ©2025. ICI Properties. All rights reserved.

For Sale/Lease 

545 McBride Avenue, Neepawa, Manitoba
iciproperties.com