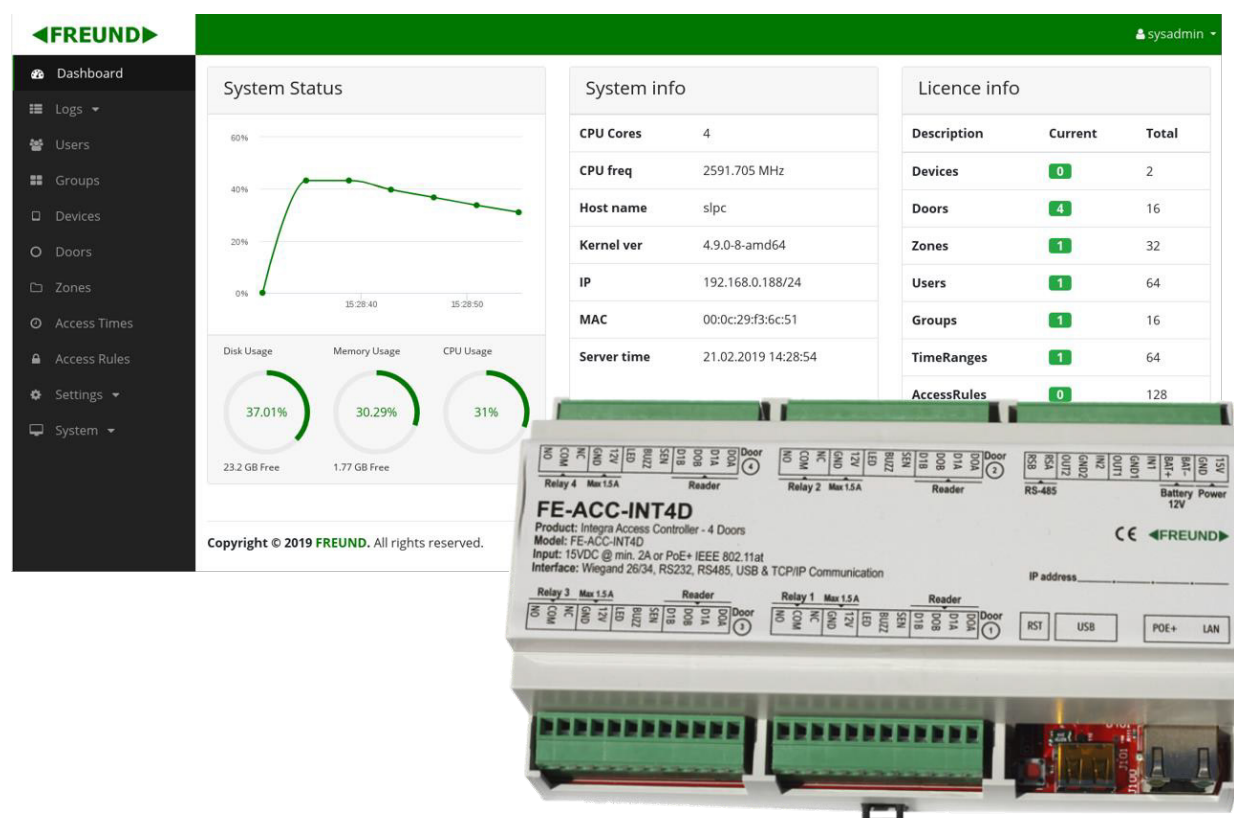


## FE-ACC-INT4D

**FREUND IP-INTEGRA FE-ACC-INT4D** Access Controller is fully scalable Linux based unit that can be easily configured through intuitive WEB interface.

Supporting standard Wiegand, OSDP and IP/TCP protocols and 125 kHz / 13.56 MHz card readers with and without PIN keypad option.



Intuitive setup of the Access Control System through web browser. No system complexity increased by extending system with additional modules. Easily scalable system, where adding additional controller module for additional 2 or 4 doors is just plug-and-play using INTEGRA-clustering and auto-provisioning option. **Supporting PoE+, so no additional power supplies are needed for powering electrical locks.**

Access the System from anywhere and connect geographically separated systems in one system through INTEGRA FQDN-service.

FREUND IP-INTEGRA Access Control System is easy integrable with IP-INTEGRA INTERCOM, IP-INTEGRA Public Audio systems and 3<sup>rd</sup> parts solutions supporting standard ACC-protocols.

## Specification

### SYSTEM

Processor	Allwinner H2 @ 1.3GHz & Quadcore Cortex – A7
Memory	512 MB DDR3
MCU – Sub Processor	STM32F-32BIT
MCU Memory	256 KB Flash

### INPUT/OUTPUT

Input	8x Wiegand & 2x GPI Ports
Output	2x GPO Ports
Communication	RS-485, USB & IP/TCP
Reader Control & Status	4x LED, 4x BUZZ, 4x SEN

### CAPACITY

Users / Groups	100.000 / 1.000
Cards / Events	500.000 / 1.000.000
Controllers in Cluster	Limited by Network capacity
Physical Doors / Virtual Doors	4 / Unlimited

### FUNCTION

Access Control	Anti-pass back, Multi-interlock, Multi-card unluck, Time Scheduler, Visitor Card Management, User Presence Report, Device Monitoring and Notifications, Access Logs, Bulk Management, Multi-Device Synchronization
User Management	System Admin, Admin, Manager, User
Alarm Functions	Door-close Time Out Alarm, Intrusion Alarm, Duress Alarm, Tamper Alarm, Out-of-drift Alarm
RTC & Time sync	Yes

### GENERAL

External Power Supply (not included)	DC 24V/2.5A
12V DC Output Capacity*	1.6A
12V DC Output per Door Connector	700mA
Battery Backup	Lead Acid Batteries 12V 1.3Ah to 4.5Ah
Max. Relay throughput if powered through external source	30V DC @ 2A or 250V AC @ 12A
Working environment	-30°C to +60°C

Note: We recommend using external power supply if relays need to be open for extended periods of time.

IP-INTEGRA FE-ACC-INT4D controller is supporting integration with all PROXY and MIFARE Readers based on Wiegand 26, Wiegand 34 and OSDP interface.

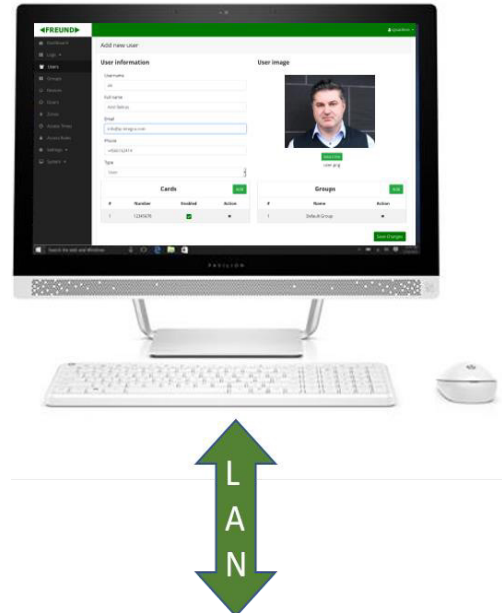
Note: To prevent compatibility problems, we recommend using IP-INTEGRA Peripherals and Readers.

\*It should be taken into consideration that max. output of ACC is split over 4 readers and relays connected to it.

## APPLICATION

FE-ACC-INT4D supporting following functions:

- Connection to LAN/PoE+ (no additional PS needed)
- Sourcing Readers, Sensors and Electrical Lock directly from Controller
- Fully programmable General Purpose I/O ports
- USB interface for additional memory, programming and debugging
- RESET button to return device in last working or factory default state
- OSDP port for additional Controllers and Readers
- Support for 4 Physical Doors through Wiegand and OSDP interface
- Limitless number of Virtual Doors from IP-INTEGRA INTERCOM system
- Integration with 3<sup>rd</sup> parts Building Automation and Surveillance Systems



DOOR-2: I/O, Wiegand 26/34 & RS485 interface



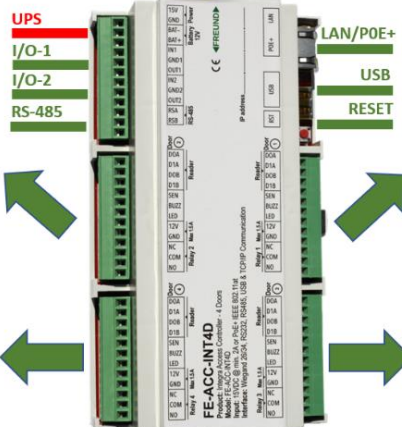
DOOR-4: I/O, Wiegand 26/34 & RS485 interface



◀FREUND▶



PoE+



Integration with following 3<sup>rd</sup> parts systems:

- Smart home
- Intruders Sensors
- Alarm Systems
- Intercom Systems
- Video Surveillance



DOOR-1: I/O, Wiegand 26/34 & RS485 interface



DOOR-3: I/O, Wiegand 26/34 & RS485 interface



## DIMENSIONS

